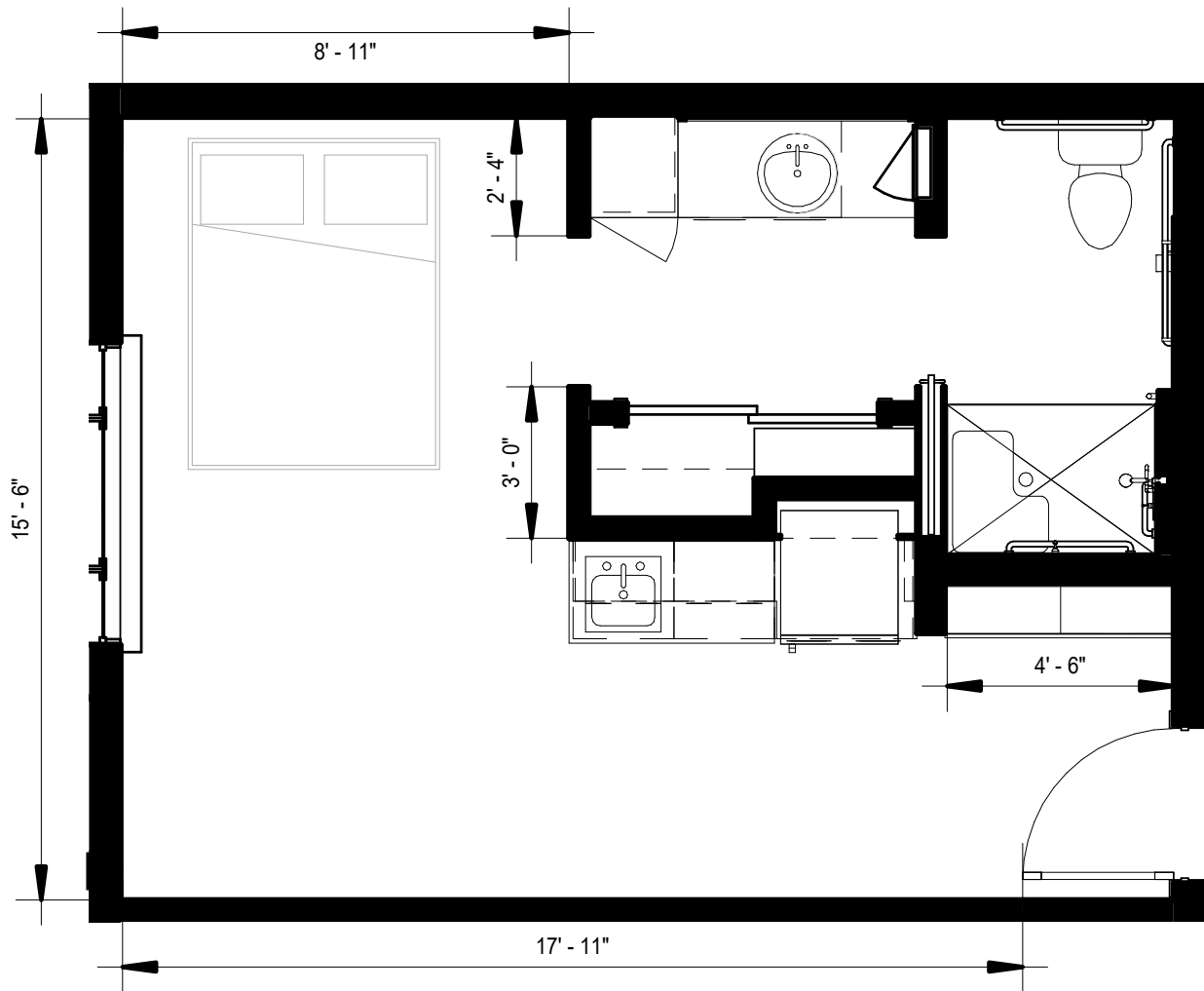


**Studio**  
**Memory Care**  
**352 sf (MC-SA)**



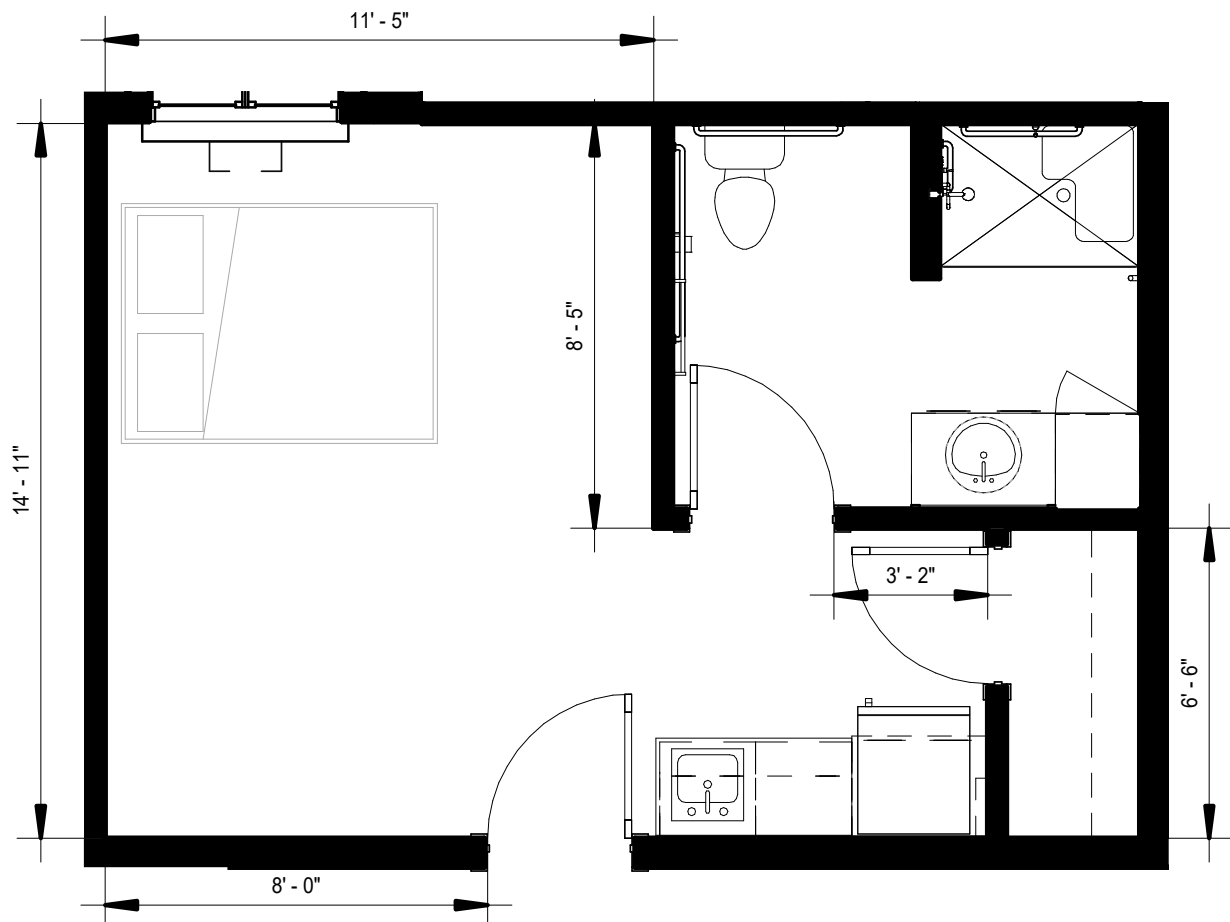
**MorningStar**

ASSISTED LIVING & MEMORY CARE  
 at JORDAN CREEK



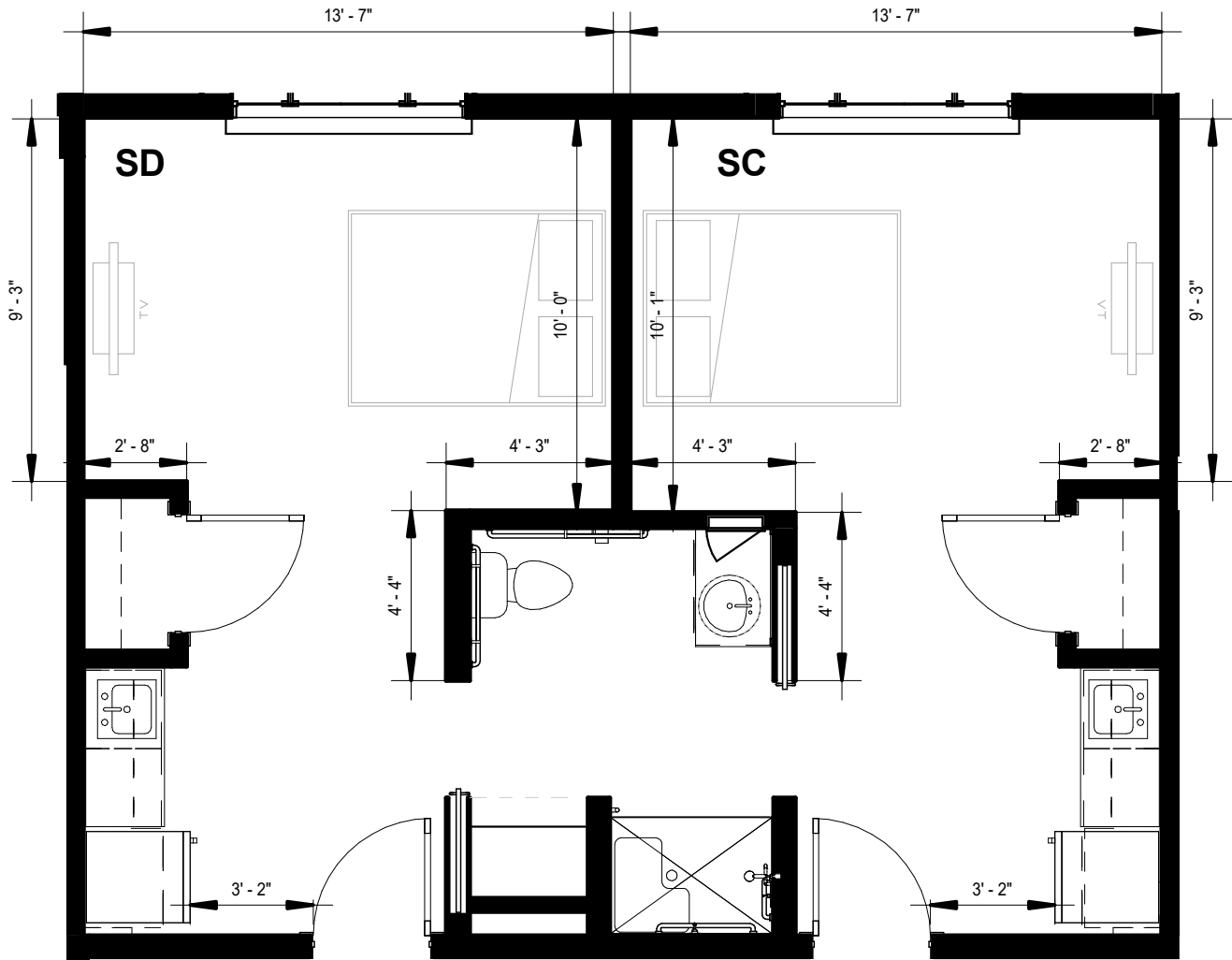
**Studio**  
**Memory Care**  
**360 sf (MC-SA horz)**





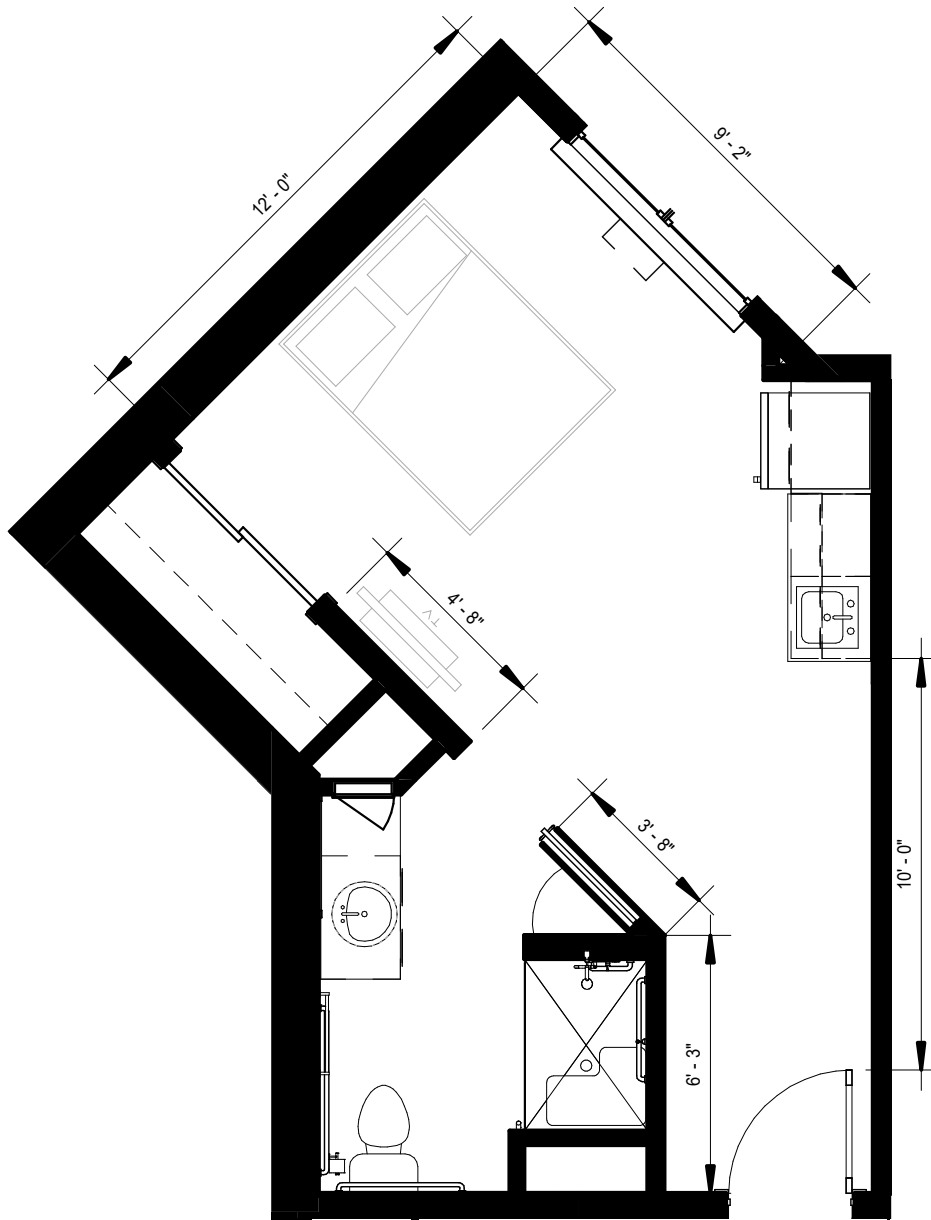
**Studio**  
**Memory Care**  
**357 sf (MC-SB)**





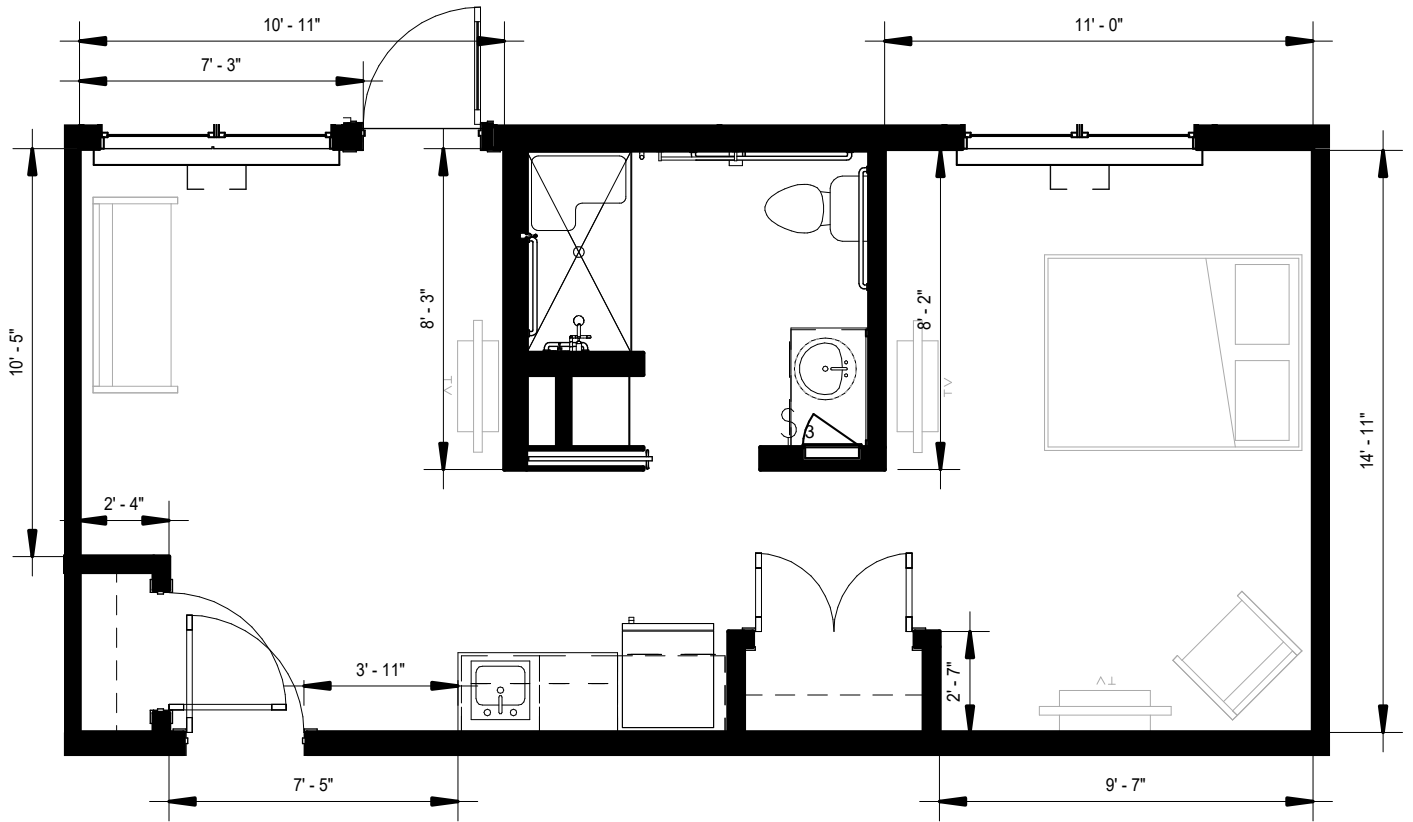
Studio with shared Bathroom  
 Memory Care  
 319 sf (MC-SC & MC-SD)





**Studio**  
**Memory Care**  
**384 sf (MC-SE)**



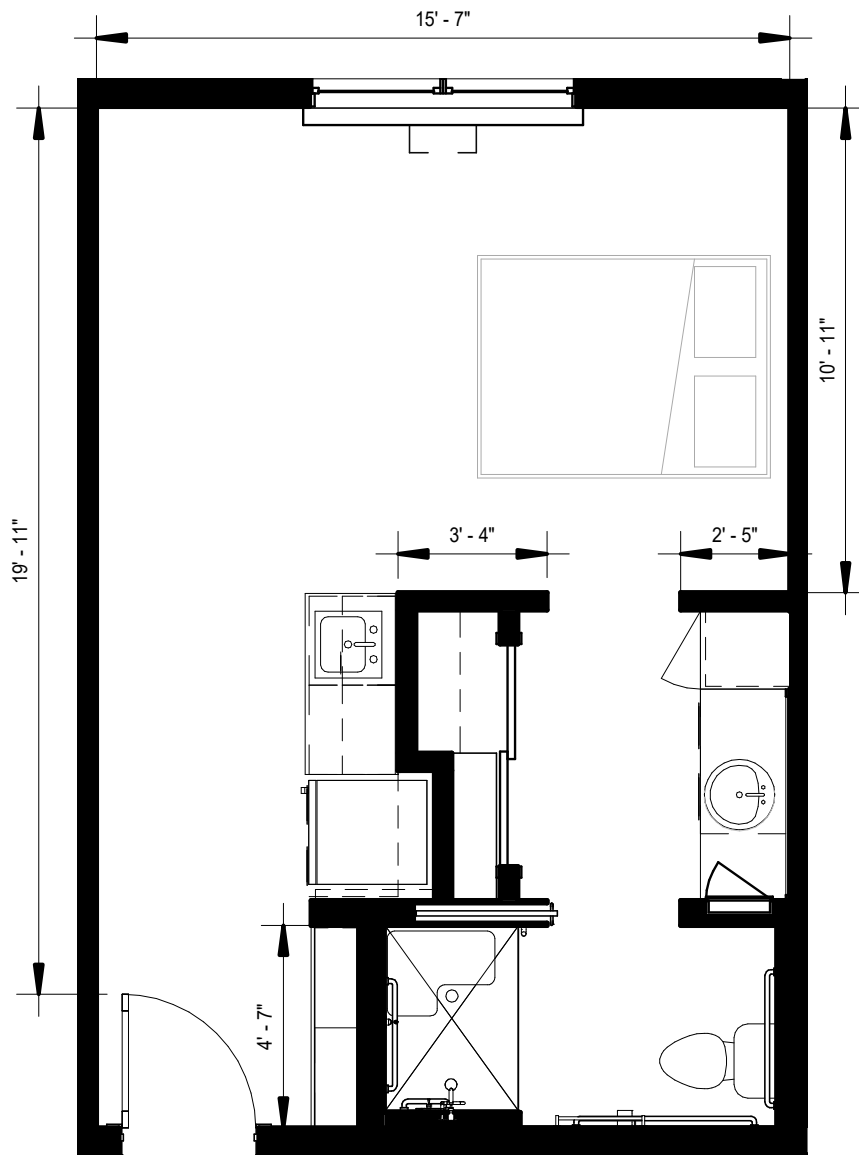


1 Bedroom 1 Bath  
 Memory Care  
 517 sf (MC-1A)



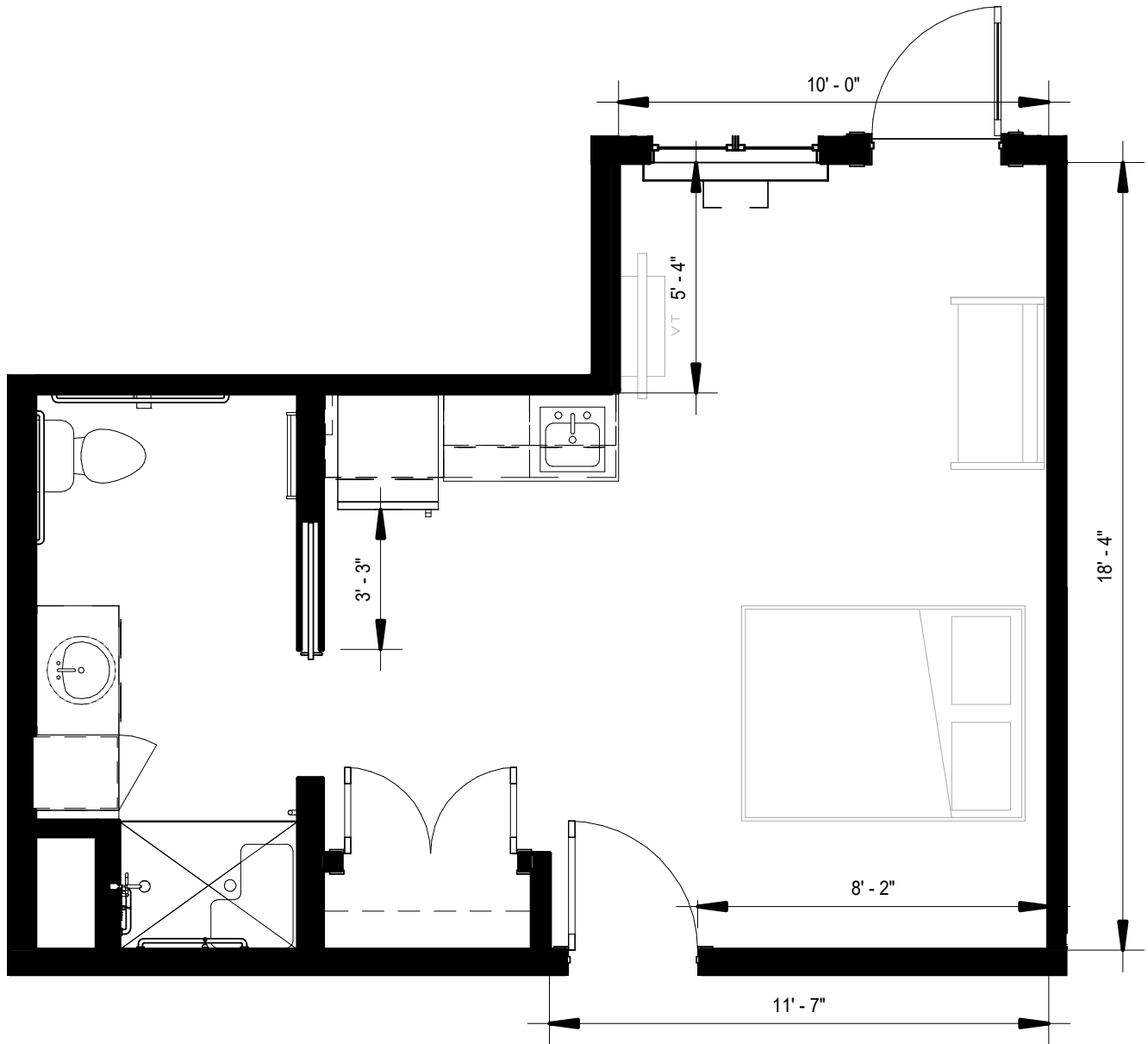
**MorningStar**

ASSISTED LIVING & MEMORY CARE  
 at JORDAN CREEK



Studio  
 Assisted Living  
 392 sf (AL-SA)





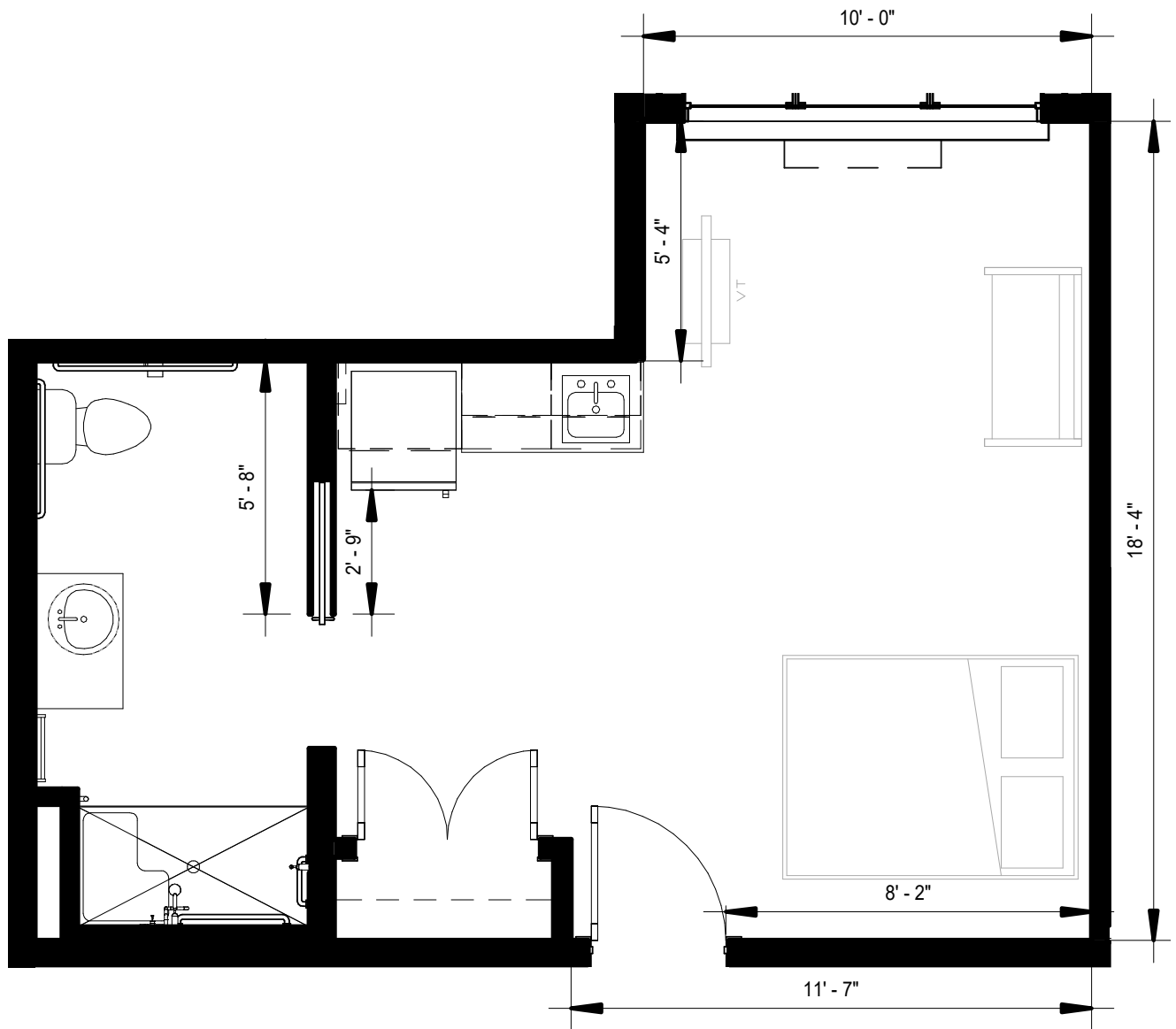
**Studio**  
**Assisted Living**  
**397 sf (AL-SB)**



**MorningStar**

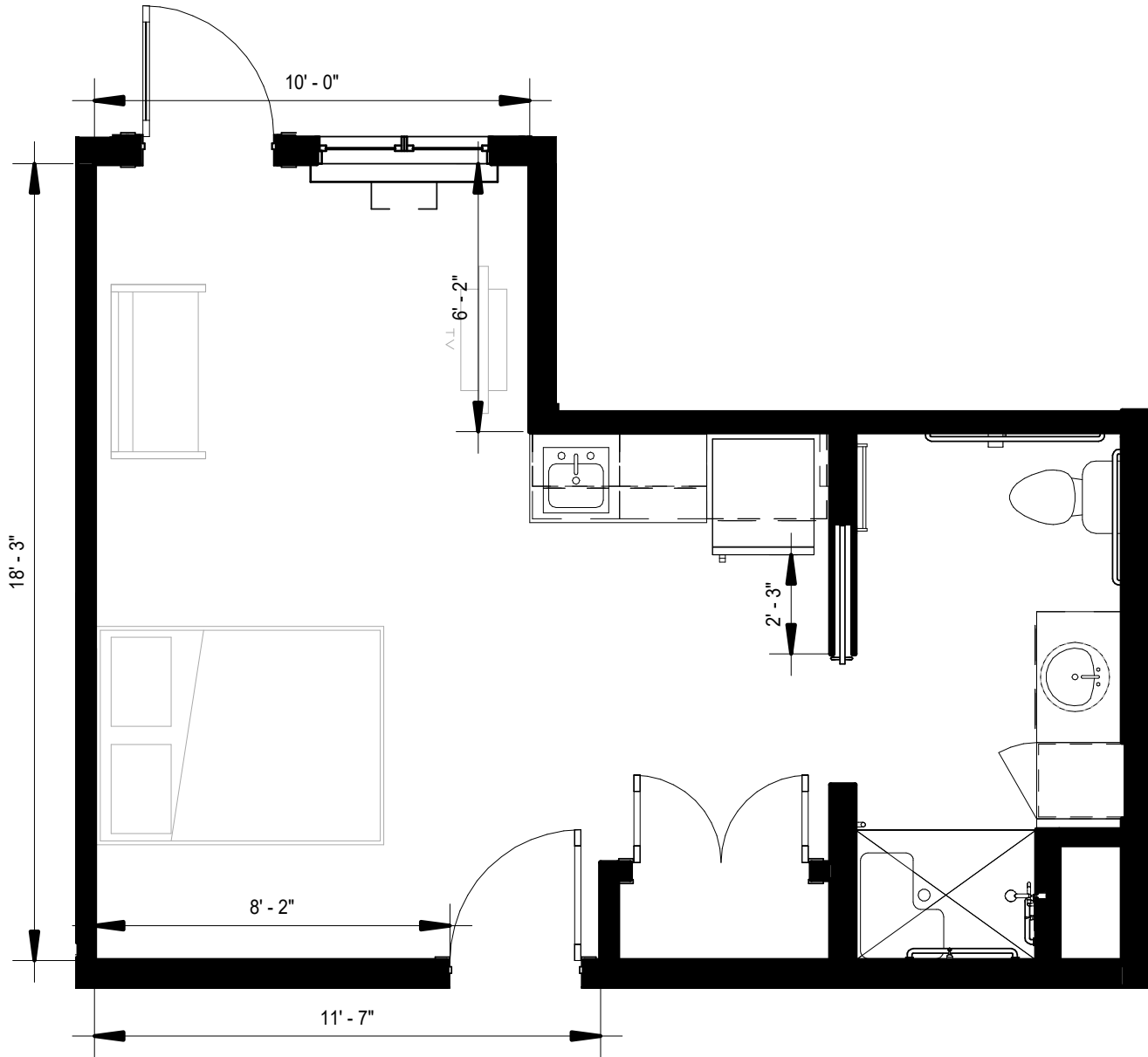
ASSISTED LIVING & MEMORY CARE  
at JORDAN CREEK





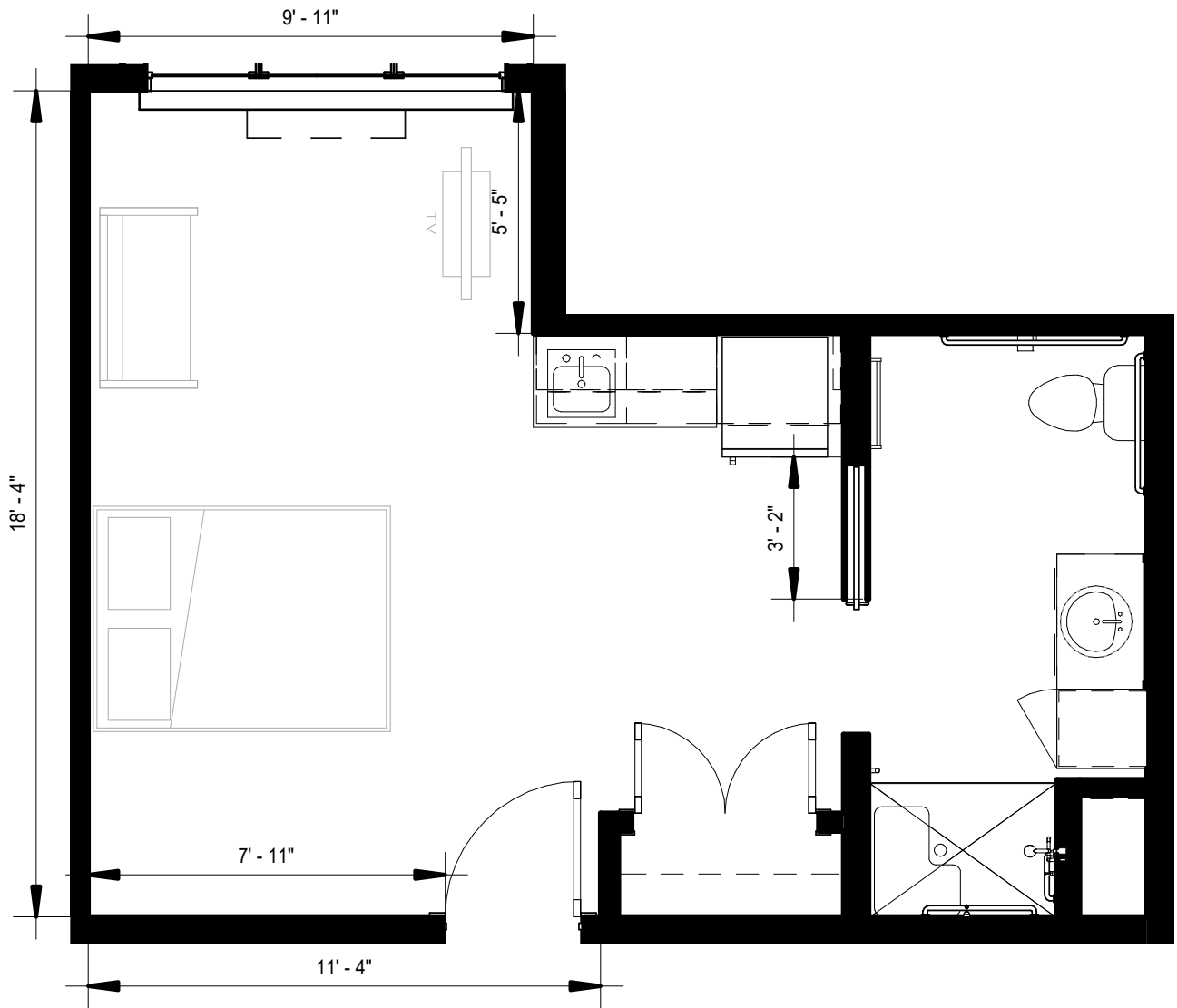
**Studio**  
**Assisted Living**  
**393 sf (AL-SB-acc)**





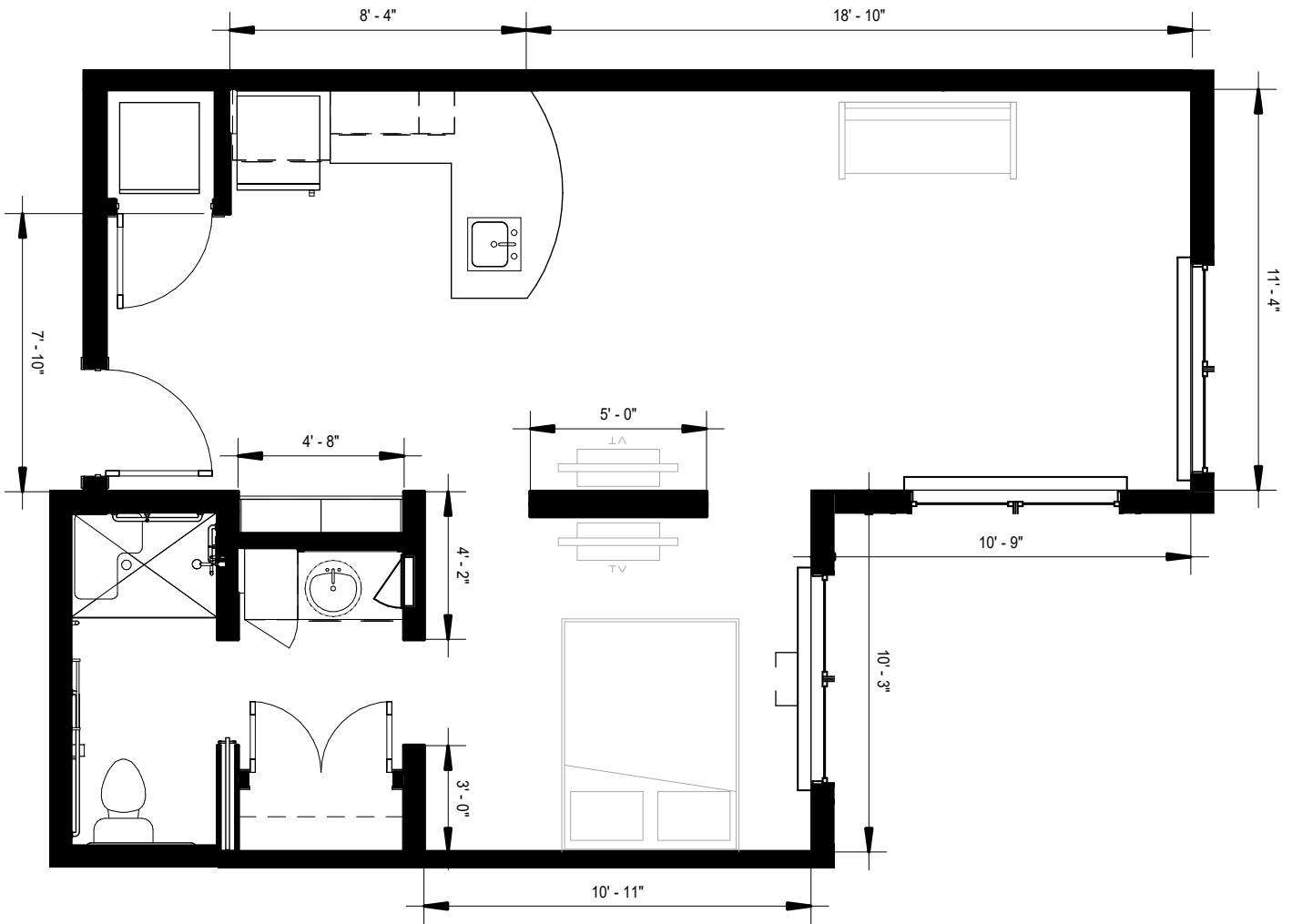
Studio  
 Assisted Living  
 385 sf (AL-SC)





Studio  
 Assisted Living  
 384 sf (AL-SD)



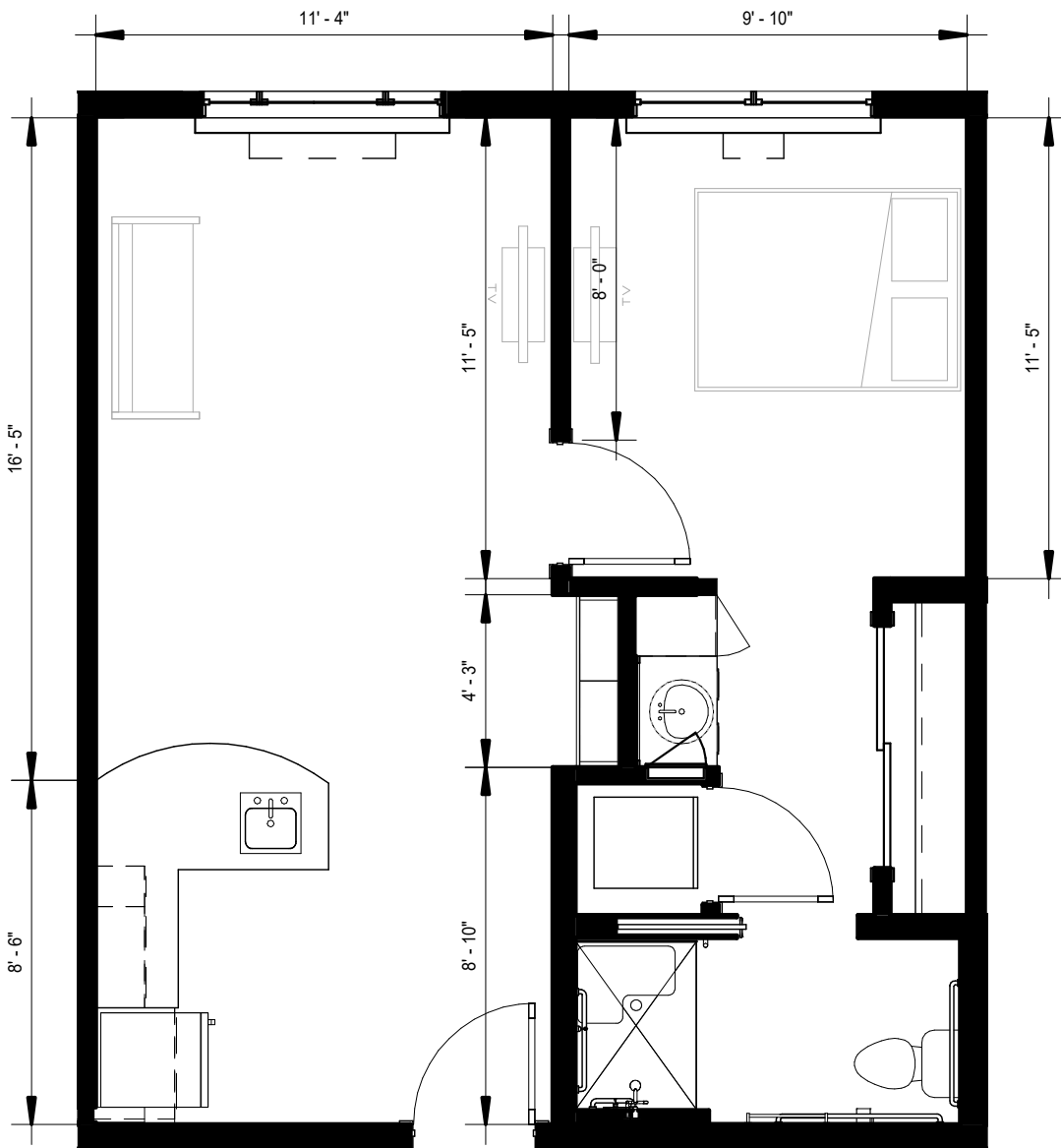


1 Bedroom 1 Bath  
 Assisted Living  
 611 sf (AL-1A)



**MorningStar**

ASSISTED LIVING & MEMORY CARE  
 at JORDAN CREEK

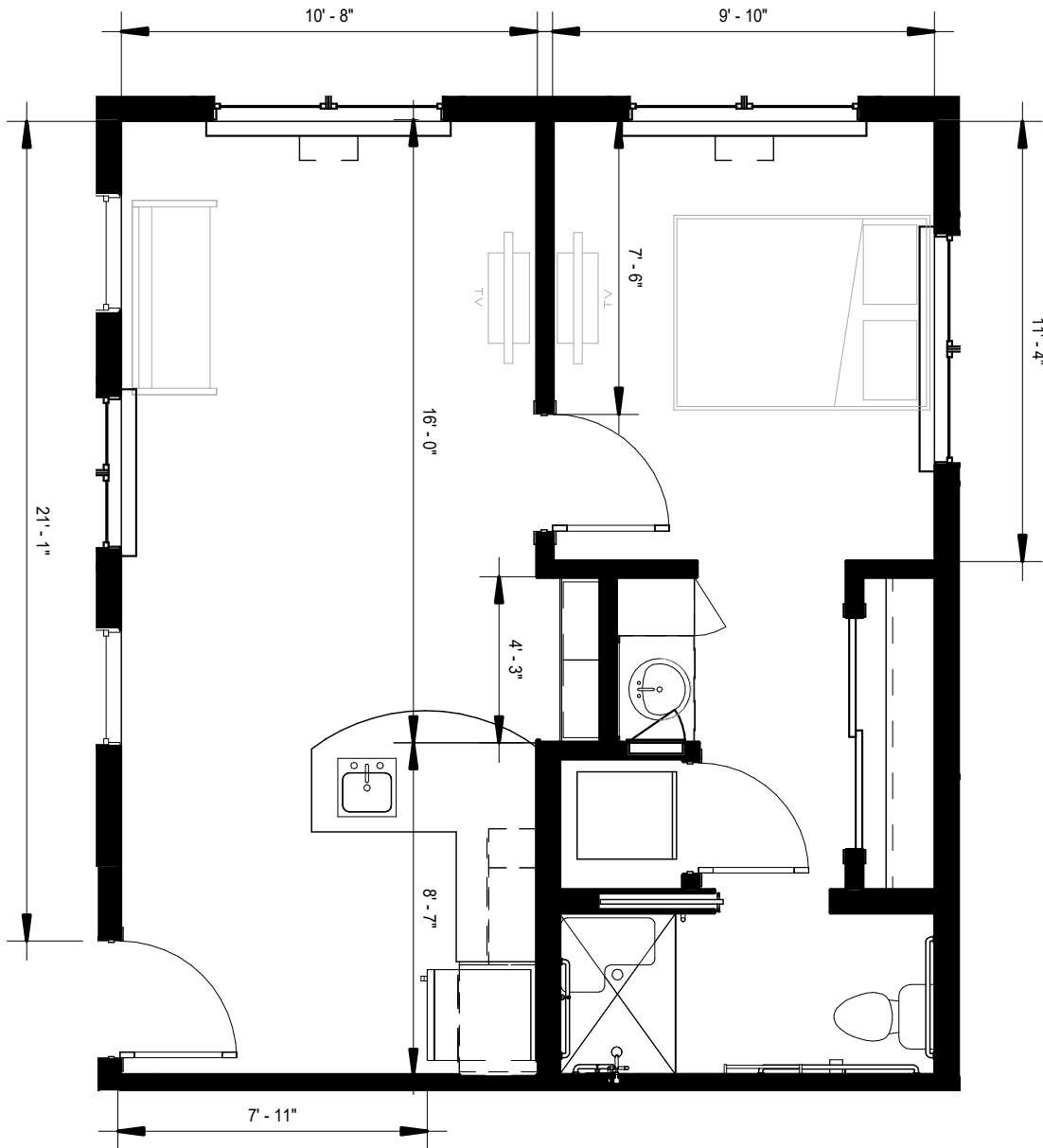


1 Bedroom 1 Bath  
 Assisted Living  
 574 sf (AL-1B)



**MorningStar**

ASSISTED LIVING & MEMORY CARE  
 at JORDAN CREEK

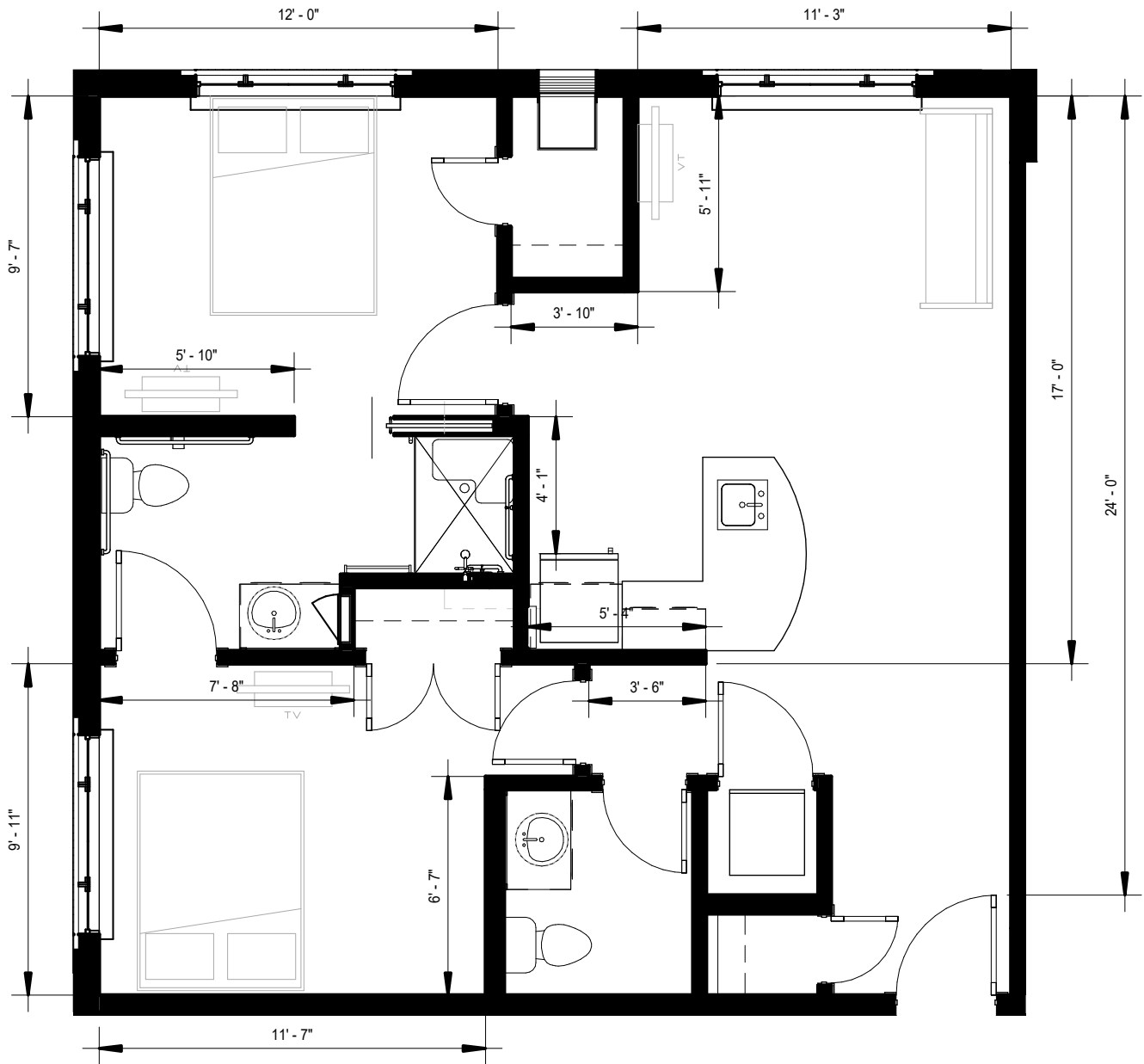


1 Bedroom 1 Bath  
 Assisted Living  
 559 sf (AL-1C)



**MorningStar**

ASSISTED LIVING & MEMORY CARE  
 at JORDAN CREEK

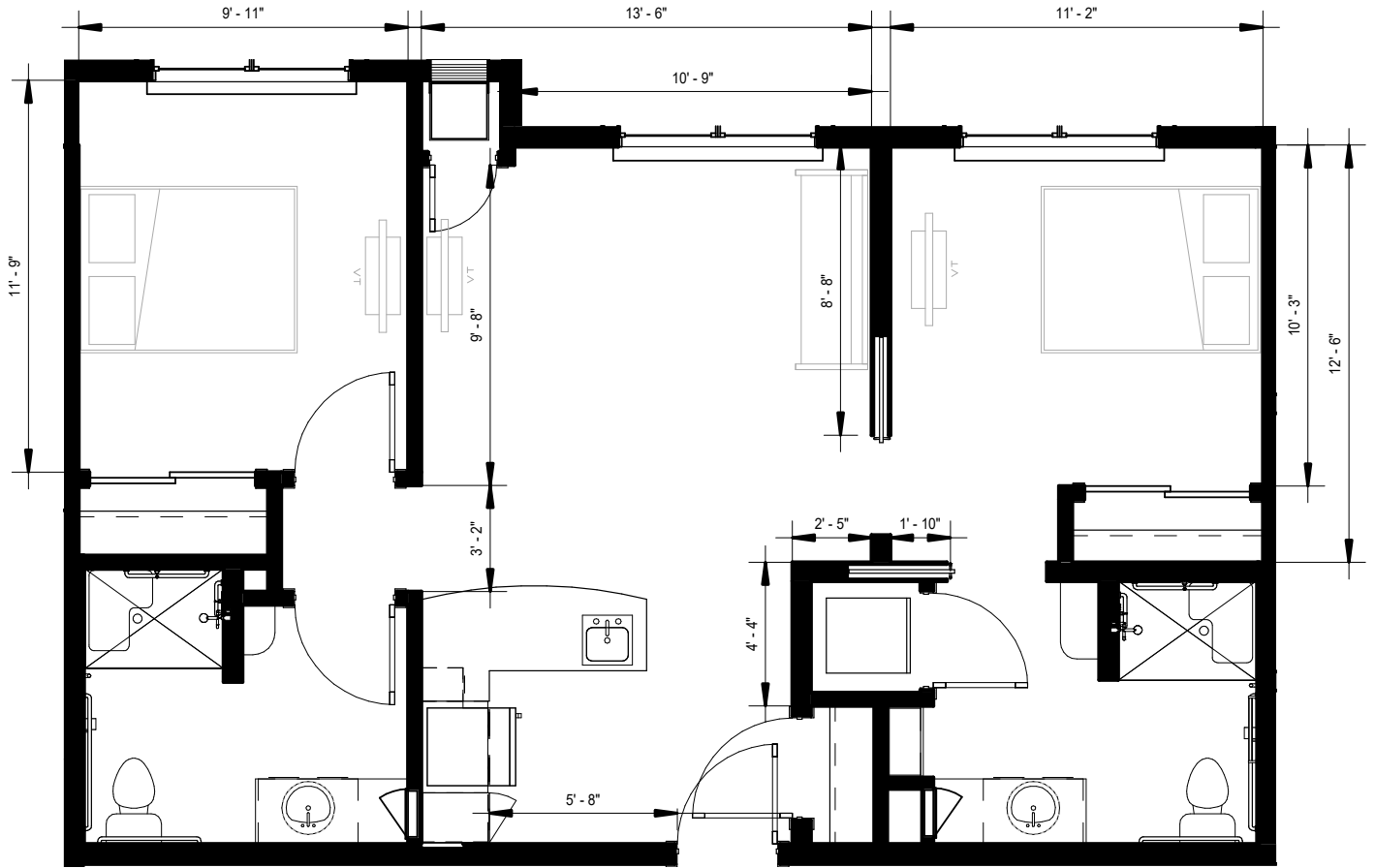


2 Bedroom 1.5 Bath  
 Assisted Living  
 787 sf (AL-2A)



**MorningStar**

ASSISTED LIVING & MEMORY CARE  
 at JORDAN CREEK



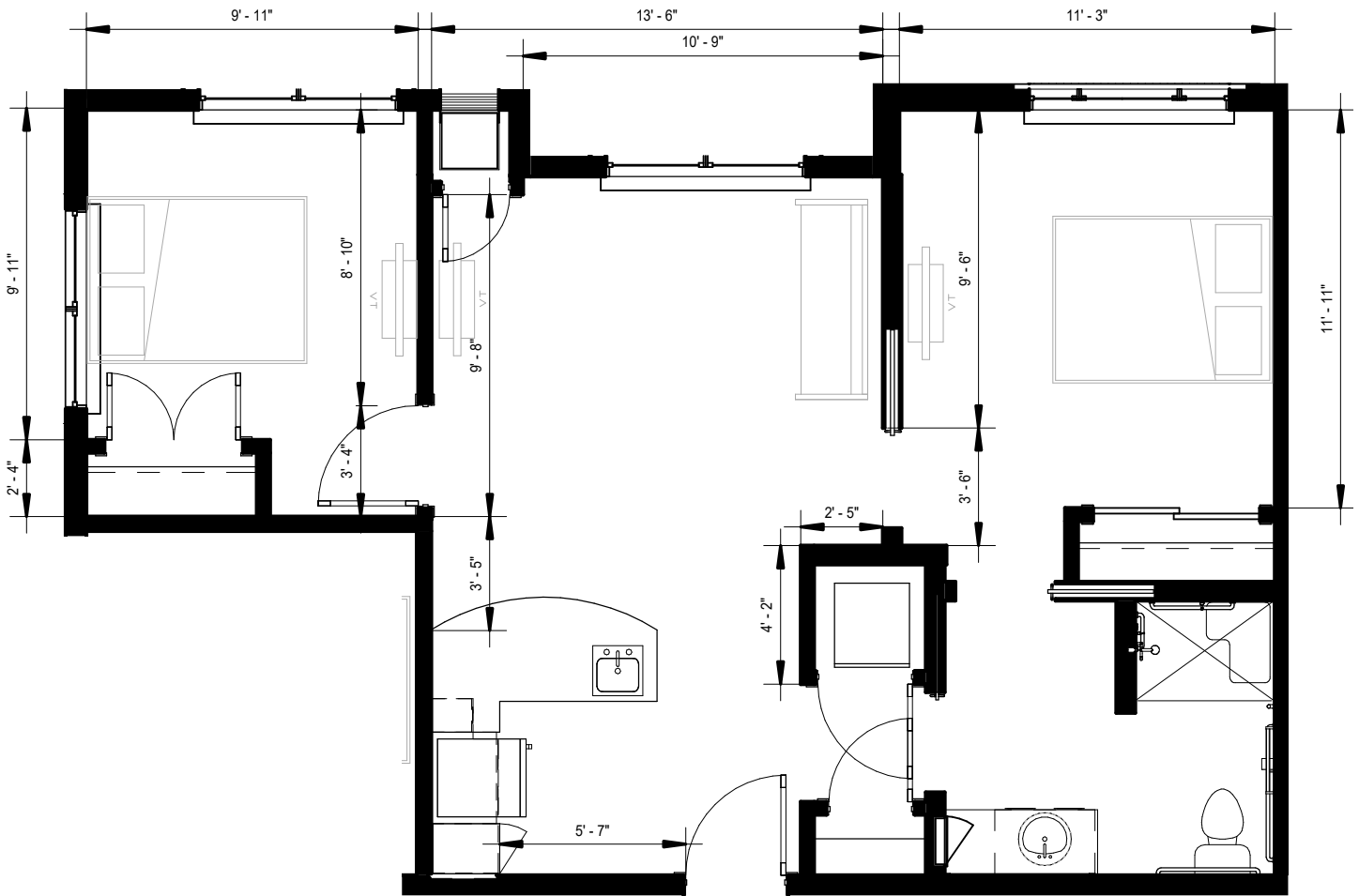
2 Bedroom 2 Bath  
 Assisted Living  
 820 sf (AL-2B)



**MorningStar**

ASSISTED LIVING & MEMORY CARE  
 at JORDAN CREEK



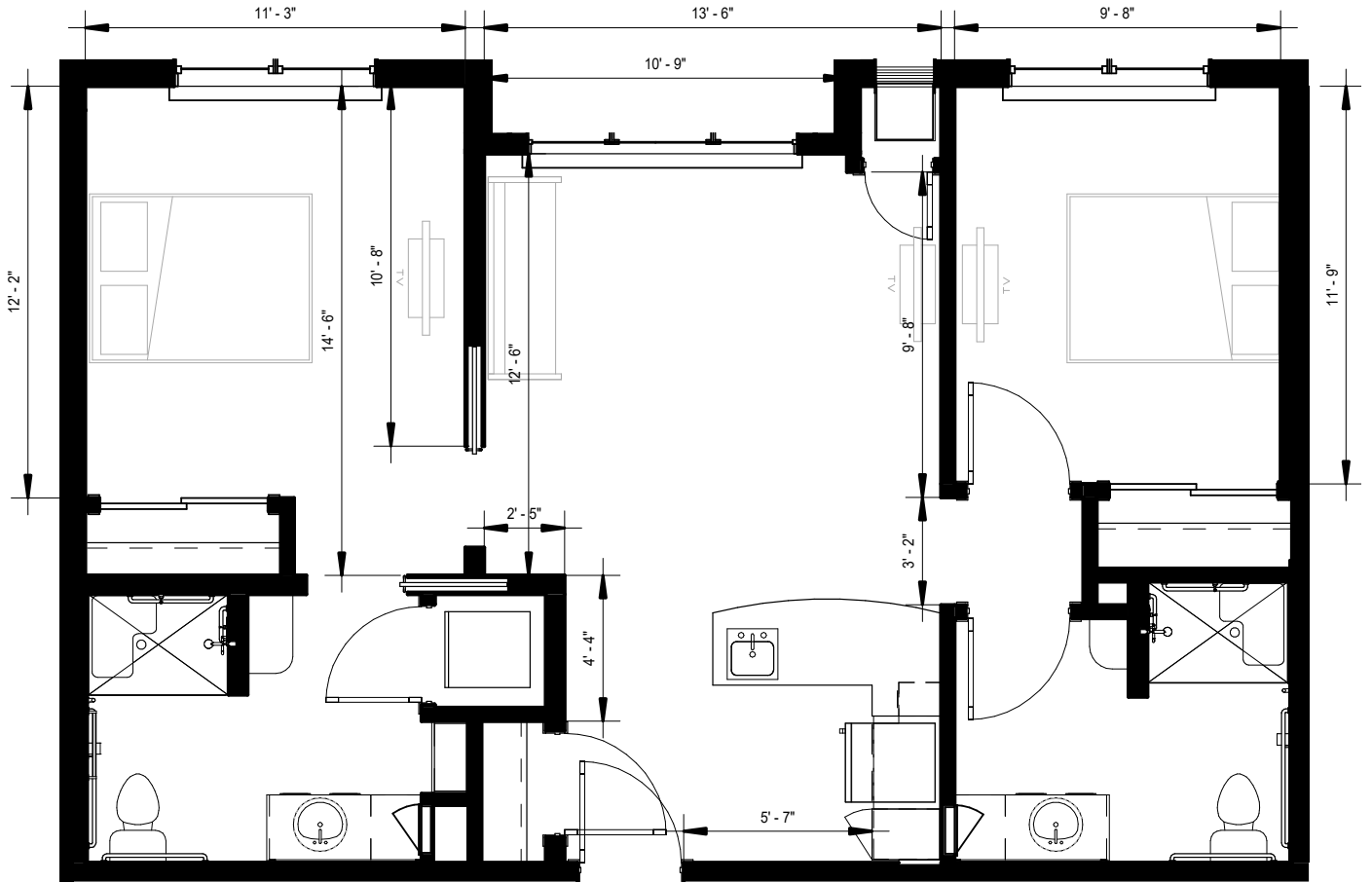


2 Bedroom 1 Bath  
 Assisted Living  
 733 sf (AL-2C)



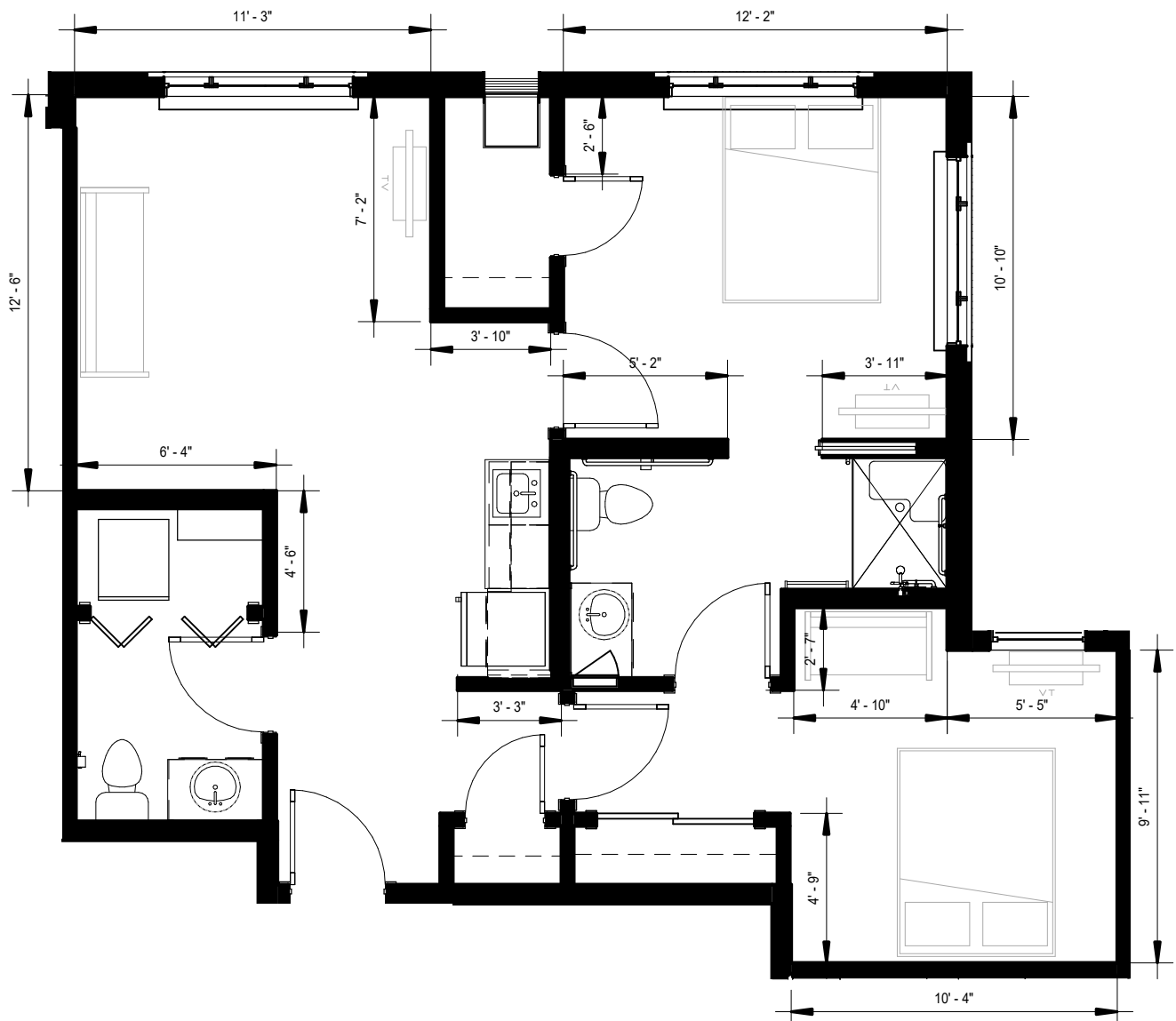
**MorningStar**

ASSISTED LIVING & MEMORY CARE  
 at JORDAN CREEK



2 Bedroom 2 Bath  
 Assisted Living  
 360 sf (AL-2D)



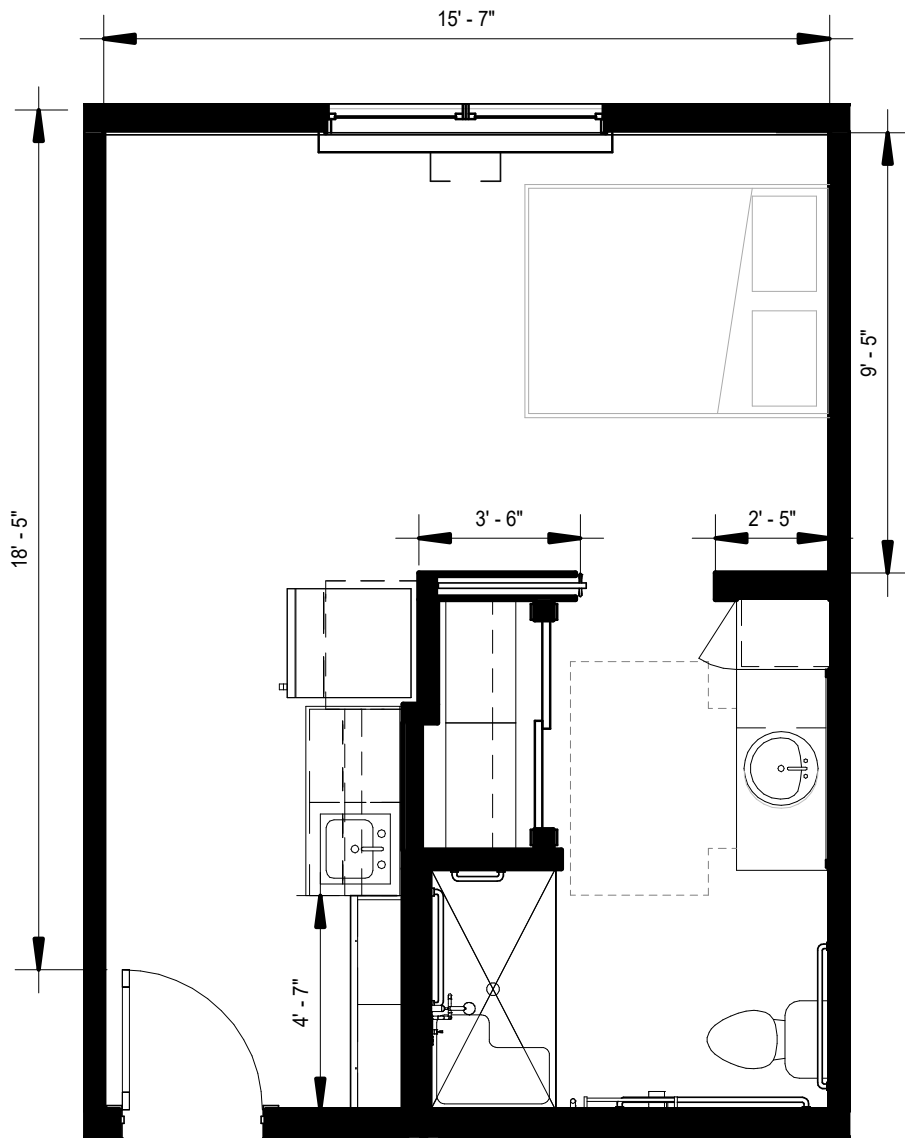


2 Bedroom 1.5 Bath  
 Assisted Living  
 791 sf (AL-2E)



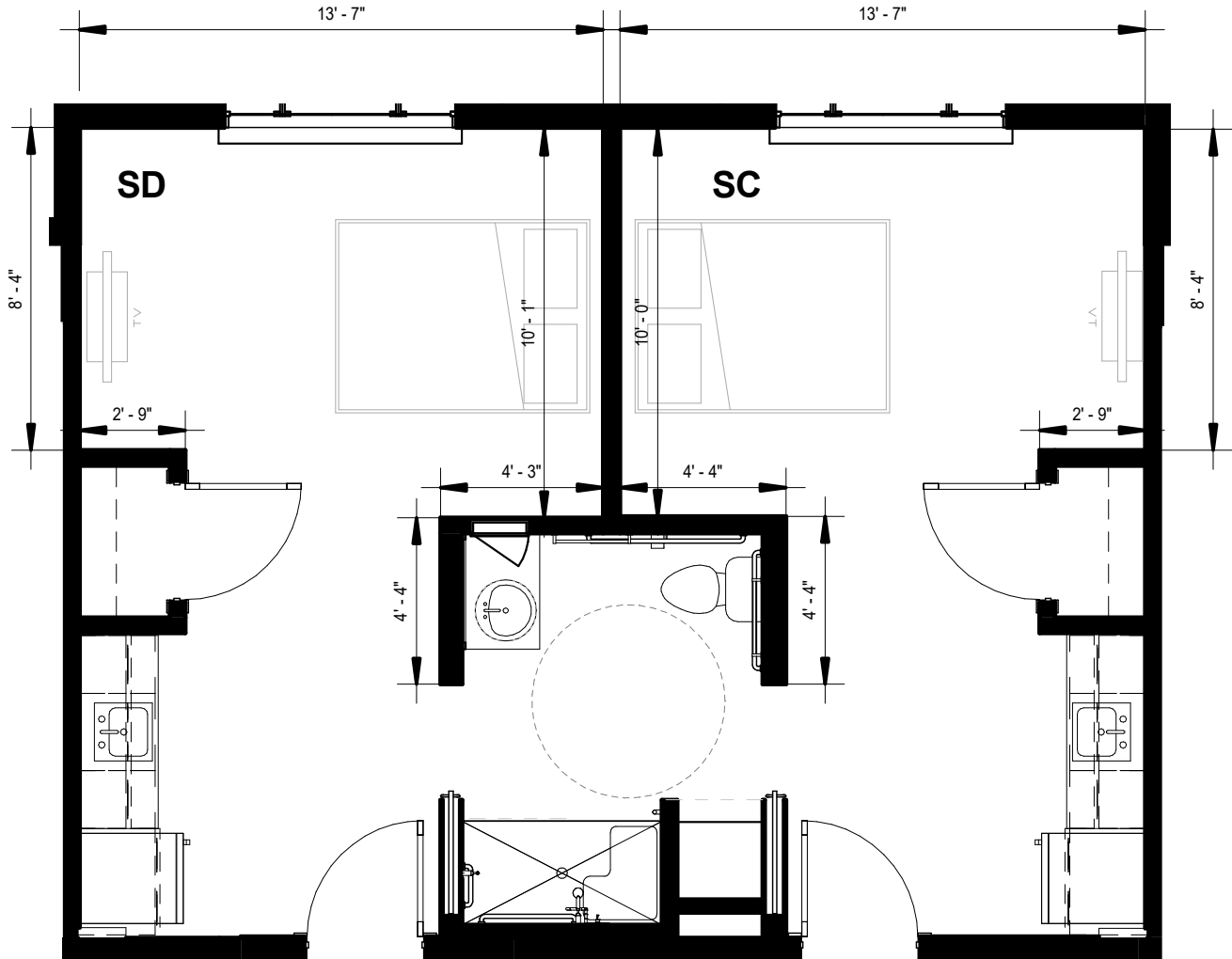
**MorningStar**

ASSISTED LIVING & MEMORY CARE  
 at JORDAN CREEK



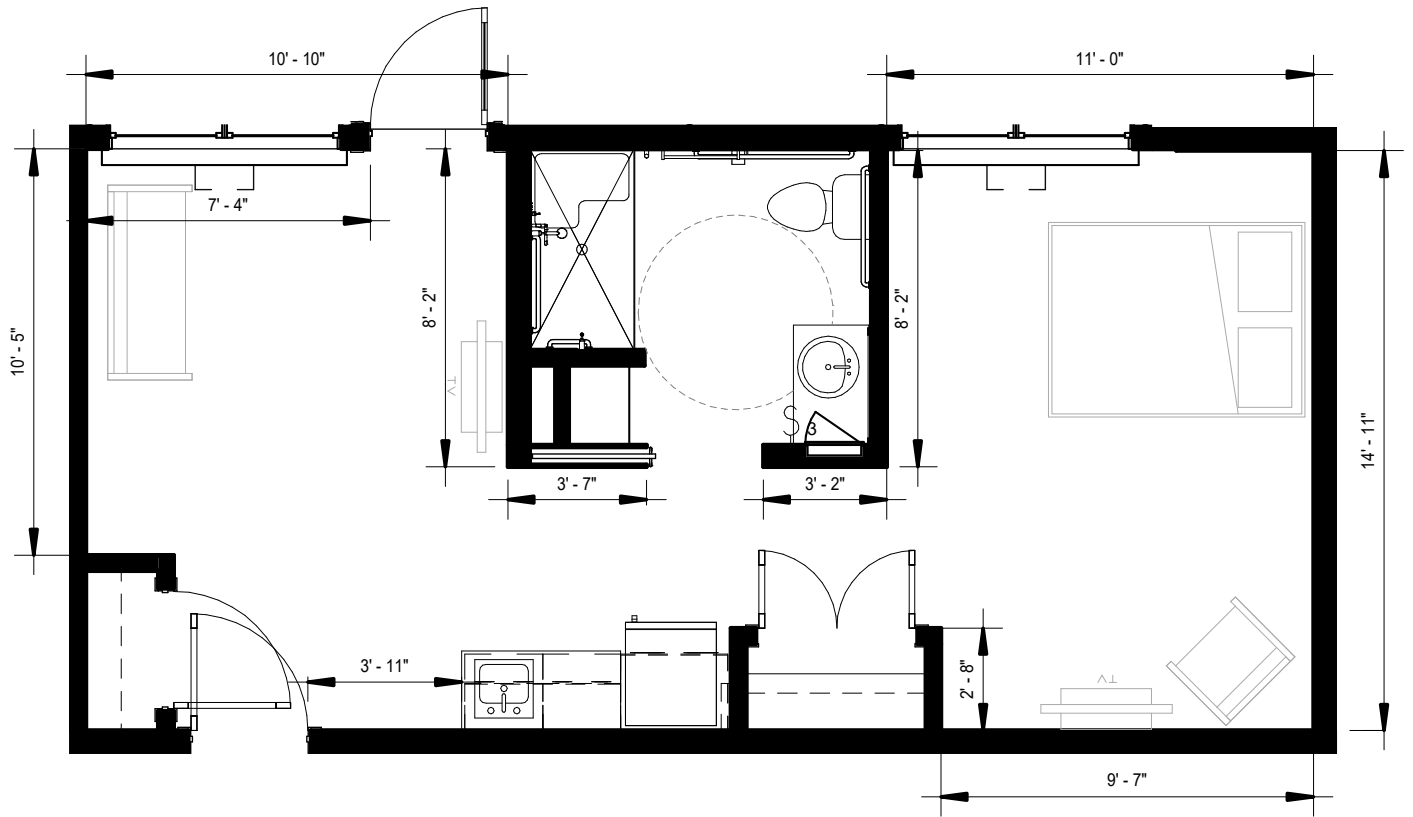
Studio  
 Memory Care  
 352 sf (MC-SA - ACC)





Studio with shared Bathroom  
 Memory Care  
 319 sf (MC-SB & MC-SC - ACC)



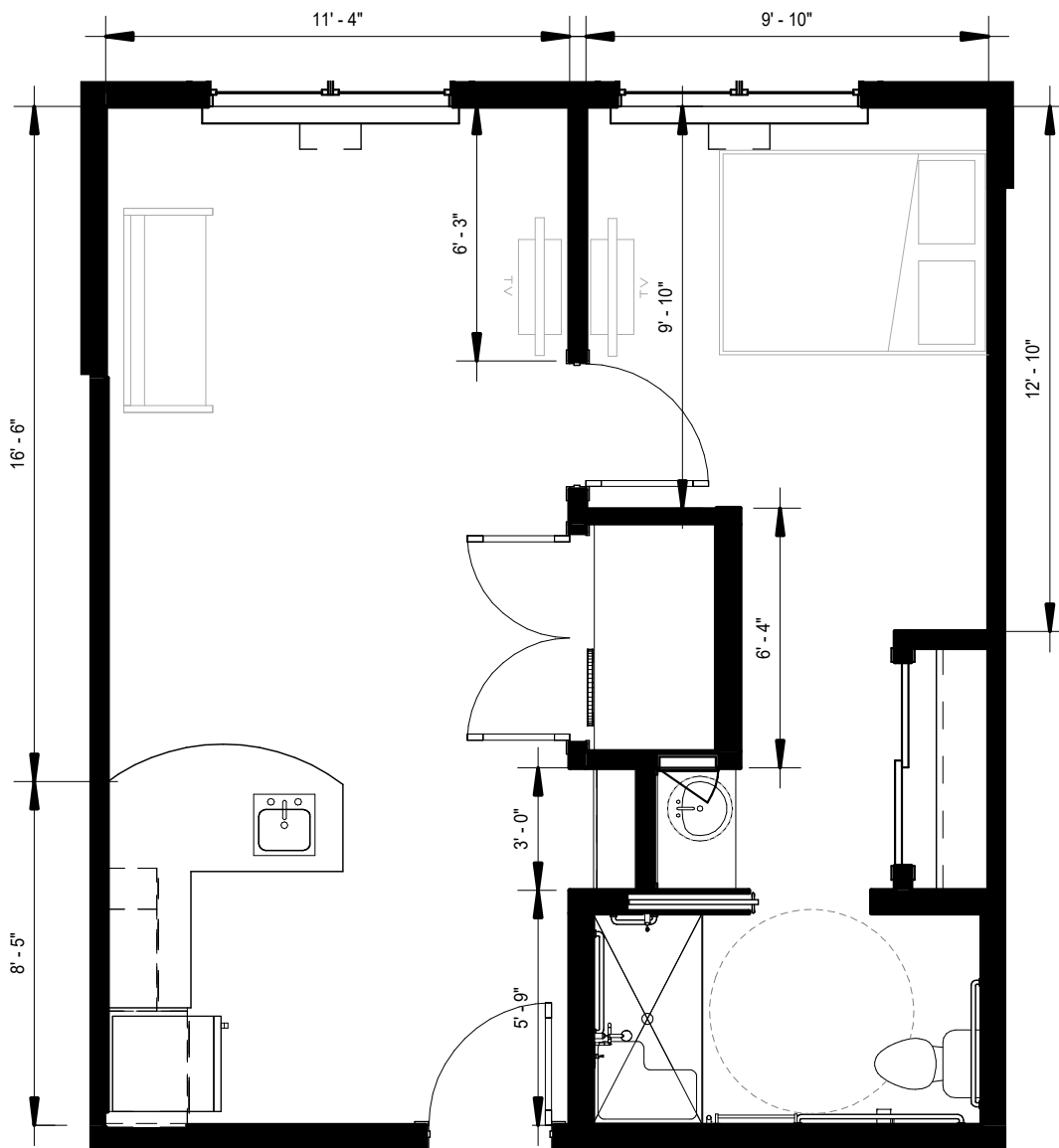


1 Bedroom 1 Bath  
 Memory Care  
 517 sf (MC-1A - ACC)



**MorningStar**

ASSISTED LIVING & MEMORY CARE  
 at JORDAN CREEK

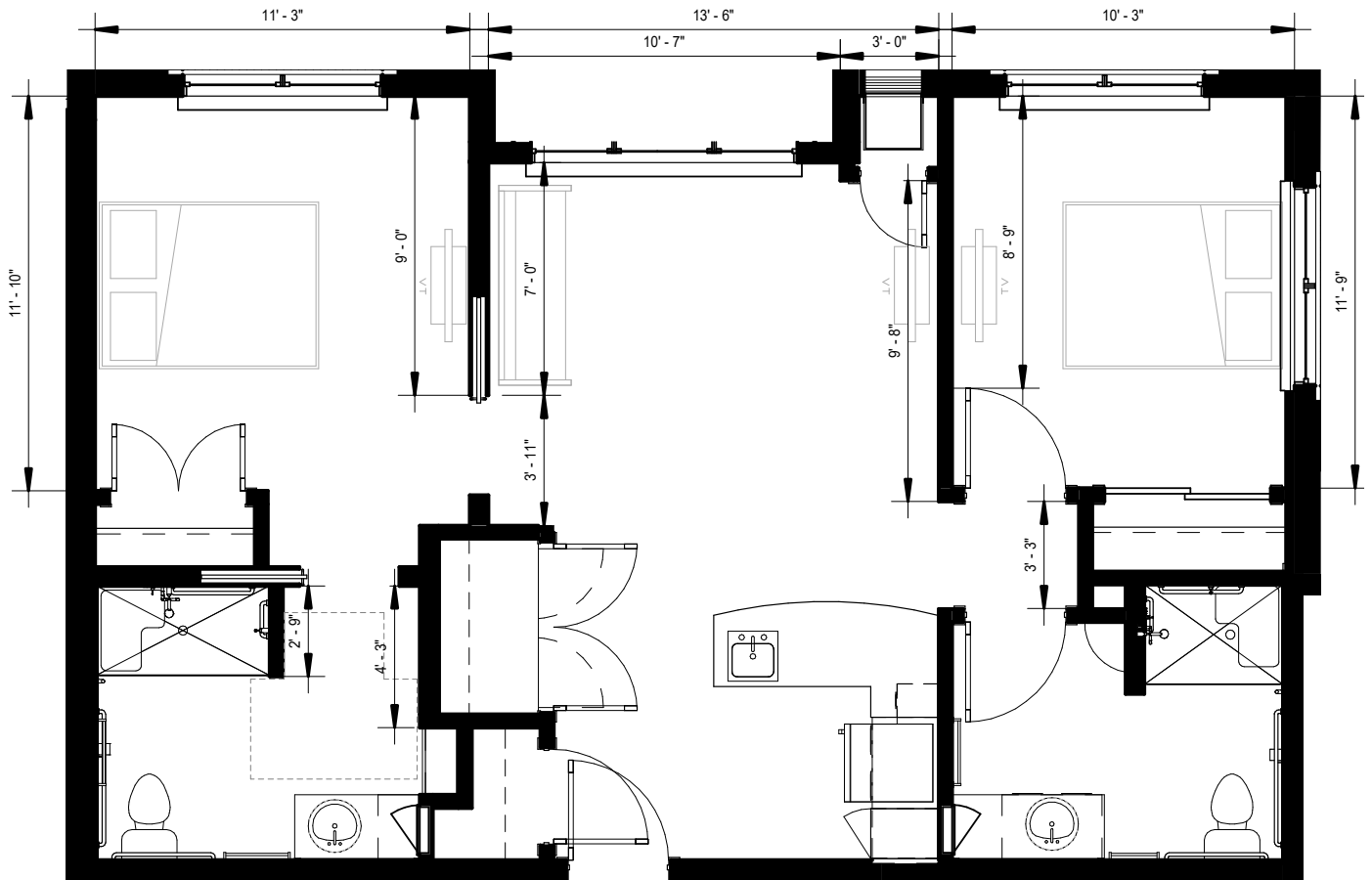


1 Bedroom 1 Bath  
 Assisted Living  
 574 sf (AL-1B -ACC)



**MorningStar**

ASSISTED LIVING & MEMORY CARE  
 at JORDAN CREEK



2 Bedroom 2 Bath  
 Assisted Living  
 820 sf (AL-2B - ACC)



**MorningStar**

ASSISTED LIVING & MEMORY CARE  
 at JORDAN CREEK