



Studio

Memory Care 356-419 sf

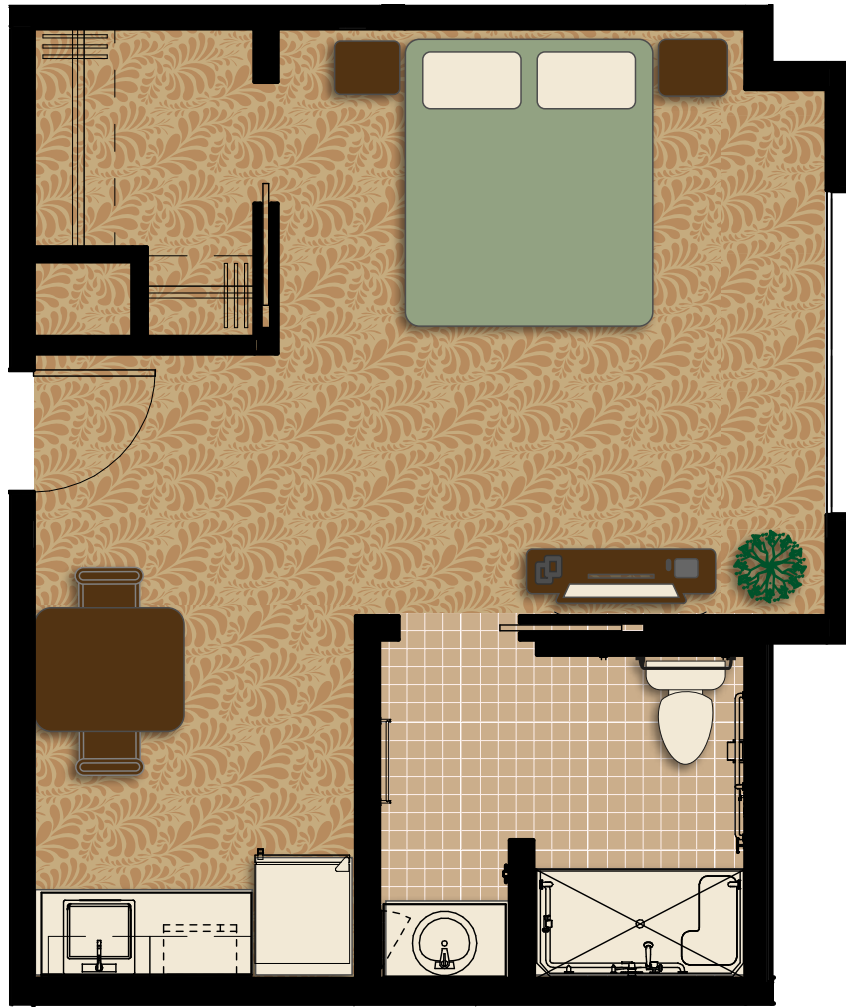


MorningStar

ASSISTED LIVING & MEMORY CARE
of HAPPY VALLEY

14391 SE Princeton Village Way • Happy Valley, OR 97015 • 503.360.0883 • MorningStarSeniorLiving.com

Representative floor plans only. Suite shape and square footage vary within neighborhoods.



Studio

Assisted Living 382–475 sf

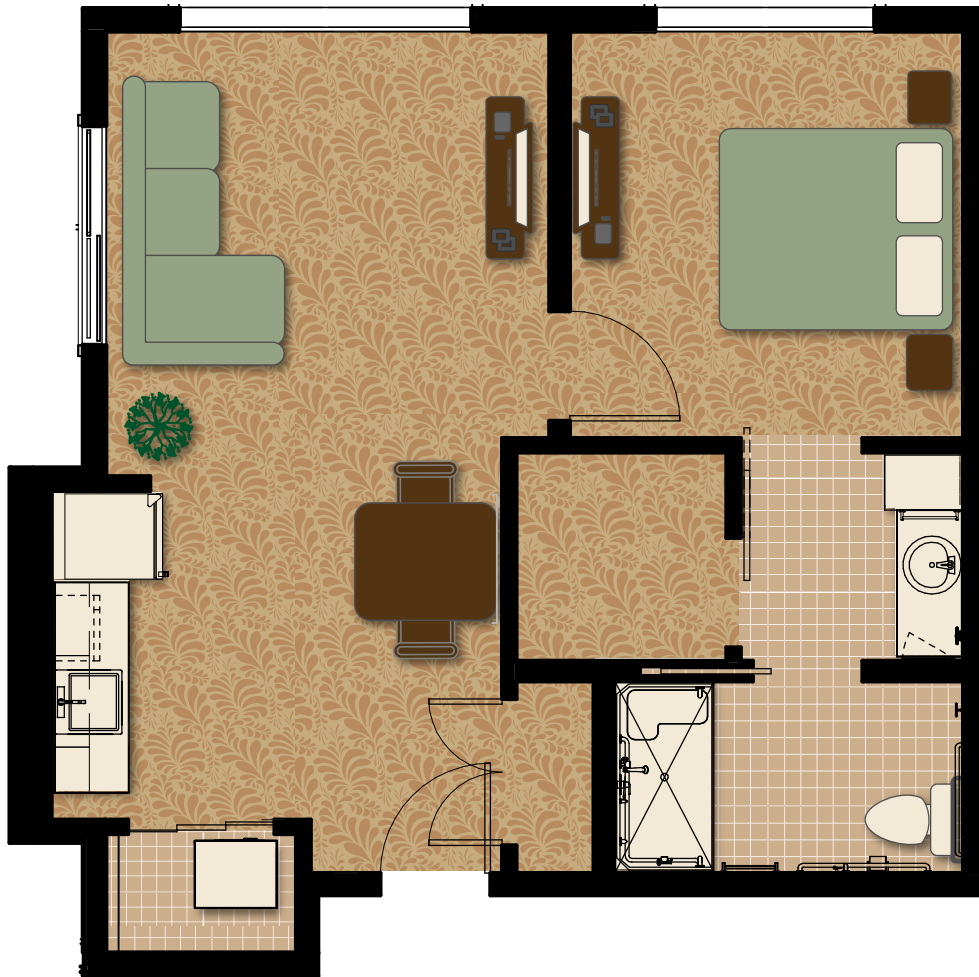


MorningStar

ASSISTED LIVING & MEMORY CARE
of HAPPY VALLEY

14391 SE Princeton Village Way • Happy Valley, OR 97015 • 503.360.0883 • MorningStarSeniorLiving.com

Representative floor plans only. Suite shape and square footage vary within neighborhoods.

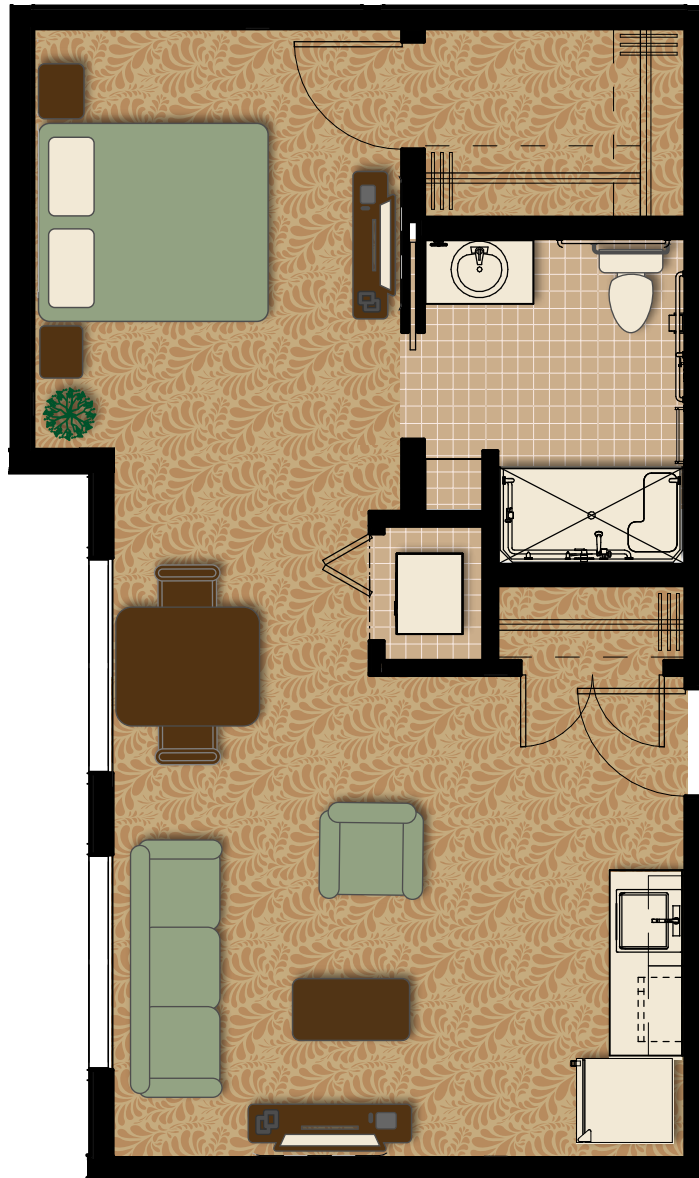


1 Bedroom 1 Bath
Assisted Living 575–614 sf



14391 SE Princeton Village Way • Happy Valley, OR 97015 • 503.360.0883 • MorningStarSeniorLiving.com

Representative floor plans only. Suite shape and square footage vary within neighborhoods.



1 Bedroom 1 Bath
Assisted Living 567–587 sf



14391 SE Princeton Village Way • Happy Valley, OR 97015 • 503.360.0883 • MorningStarSeniorLiving.com

Representative floor plans only. Suite shape and square footage vary within neighborhoods.

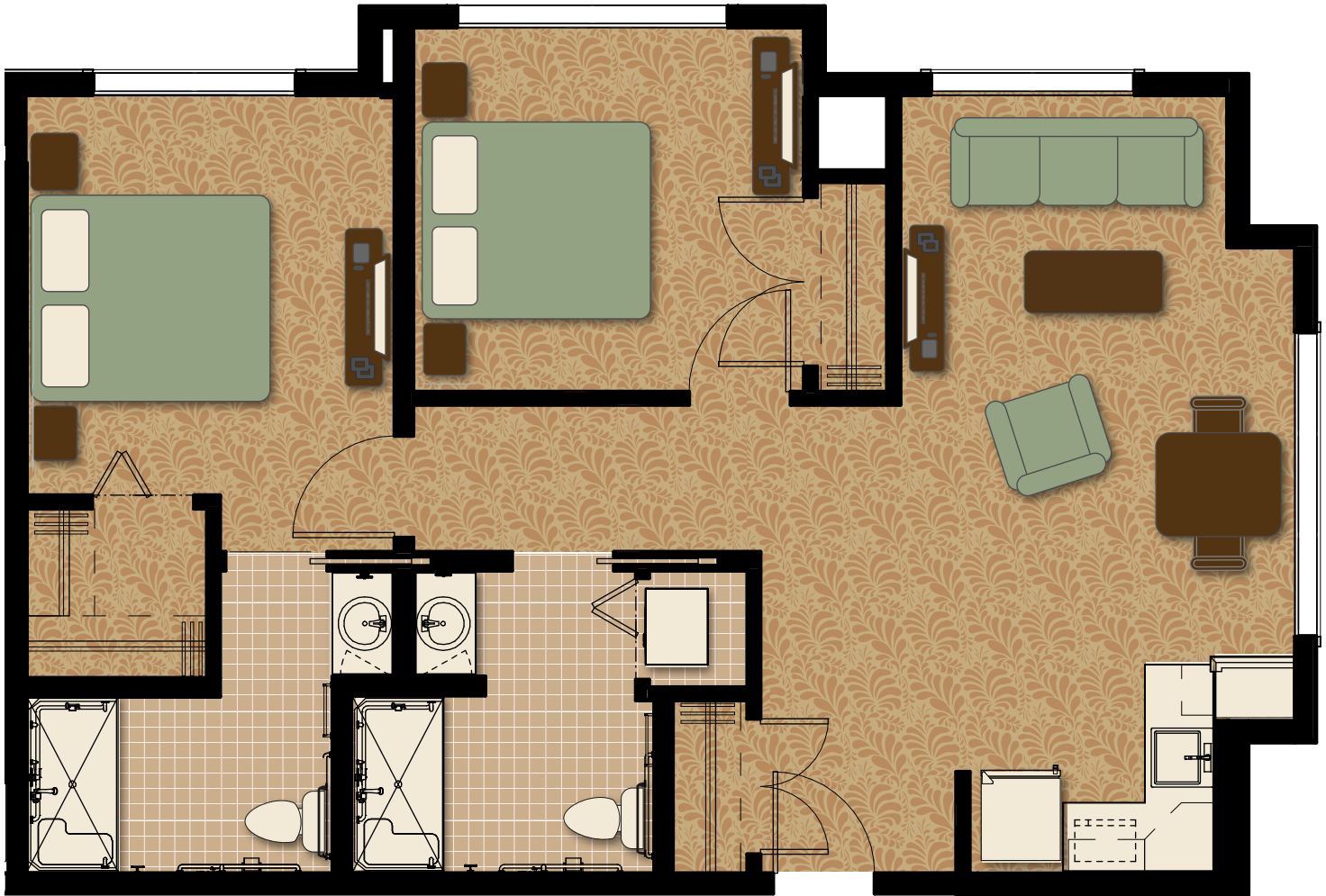


2 Bedroom 2 Bath
Assisted Living 815–851 sf



14391 SE Princeton Village Way • Happy Valley, OR 97015 • 503.360.0883 • MorningStarSeniorLiving.com

Representative floor plans only. Suite shape and square footage vary within neighborhoods.



2 Bedroom 2 Bath
Assisted Living 863–928 sf



14391 SE Princeton Village Way • Happy Valley, OR 97015 • 503.360.0883 • MorningStarSeniorLiving.com

Representative floor plans only. Suite shape and square footage vary within neighborhoods.