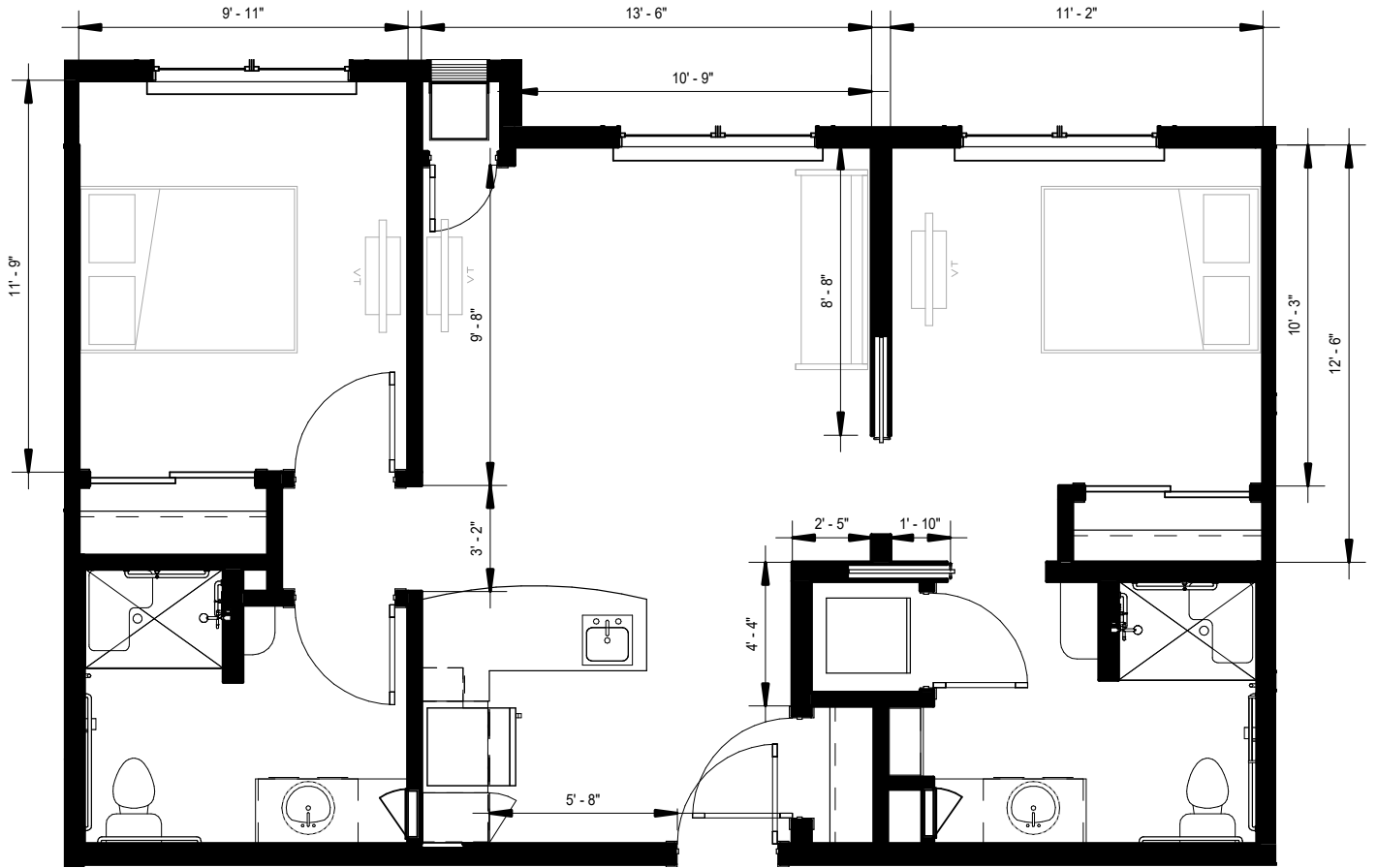


2 Bedroom 1.5 Bath
 Assisted Living
 787 sf (AL-2A)



MorningStar

ASSISTED LIVING & MEMORY CARE
 at JORDAN CREEK

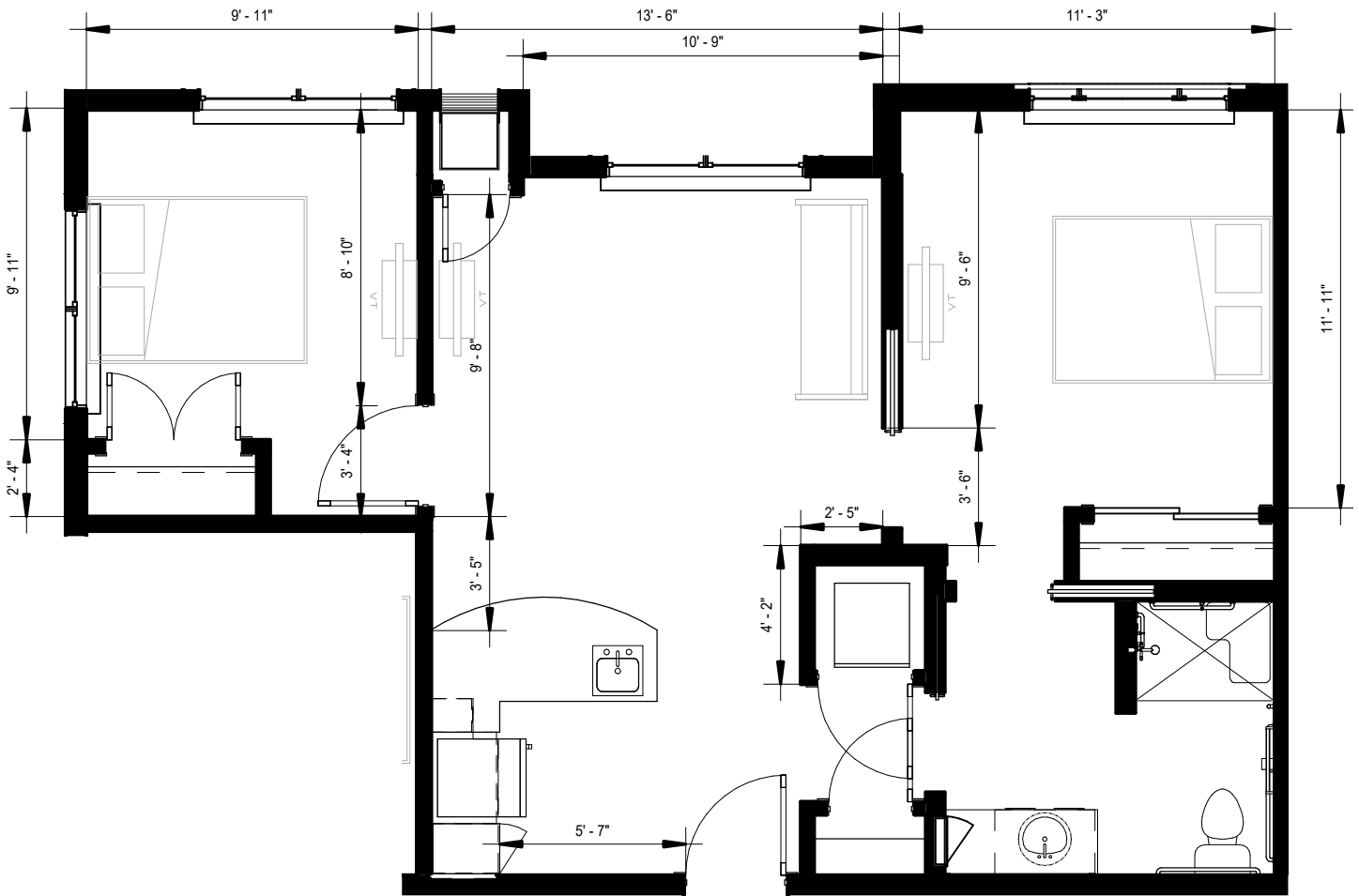


2 Bedroom 2 Bath
 Assisted Living
 820 sf (AL-2B)



MorningStar

ASSISTED LIVING & MEMORY CARE
 at JORDAN CREEK

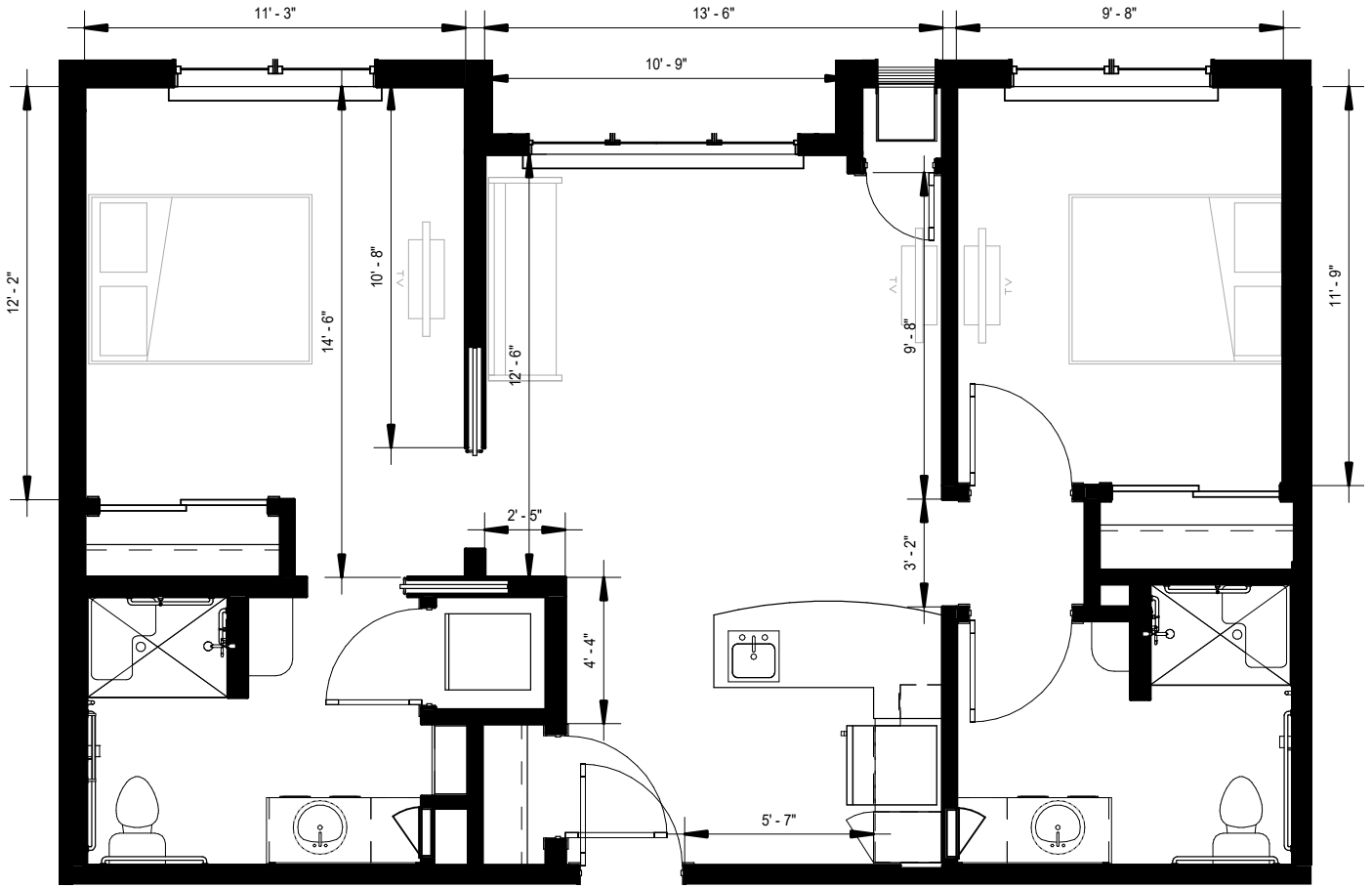


2 Bedroom 1 Bath
 Assisted Living
 733 sf (AL-2C)



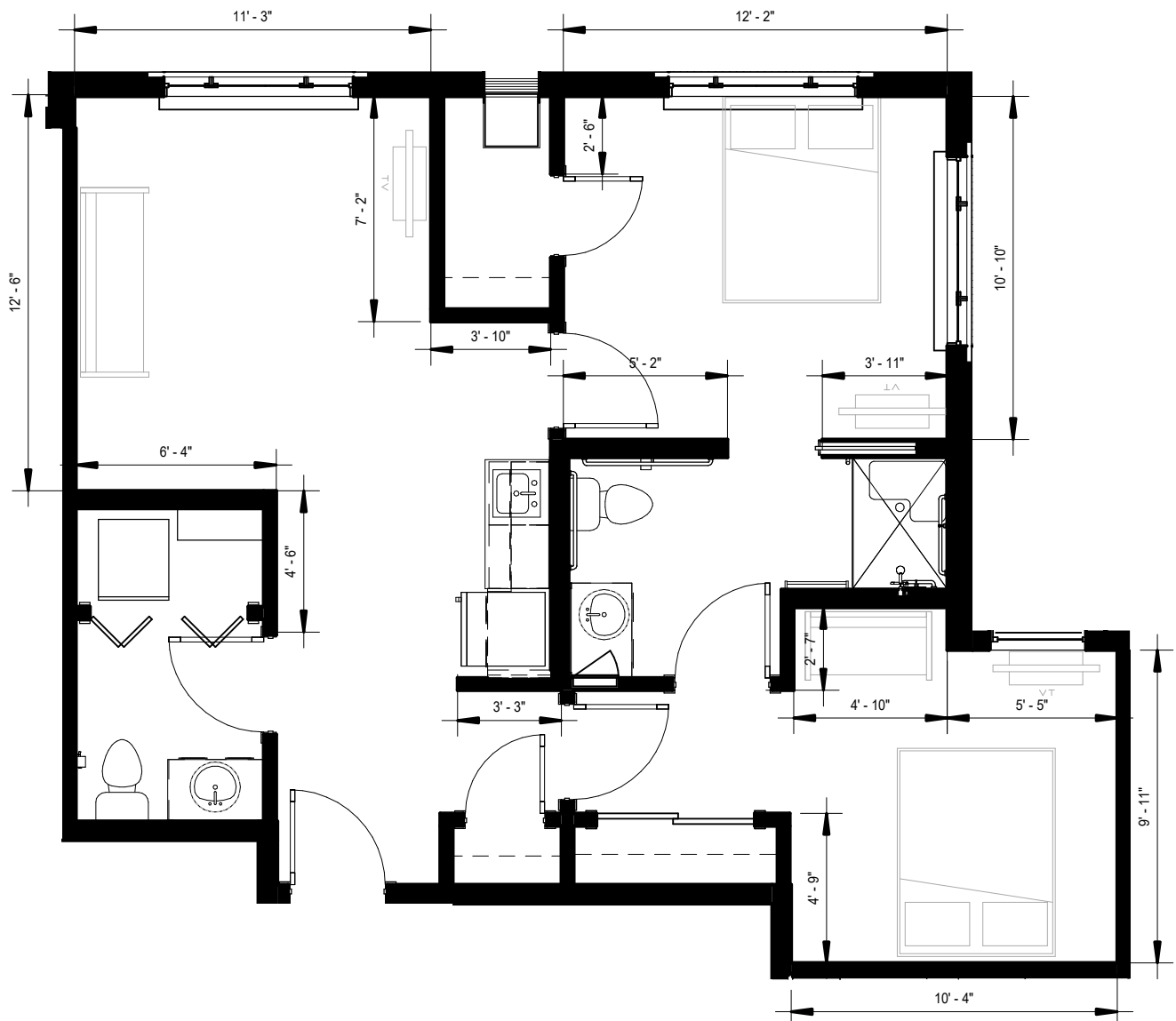
MorningStar

ASSISTED LIVING & MEMORY CARE
 at JORDAN CREEK



2 Bedroom 2 Bath
 Assisted Living
 360 sf (AL-2D)



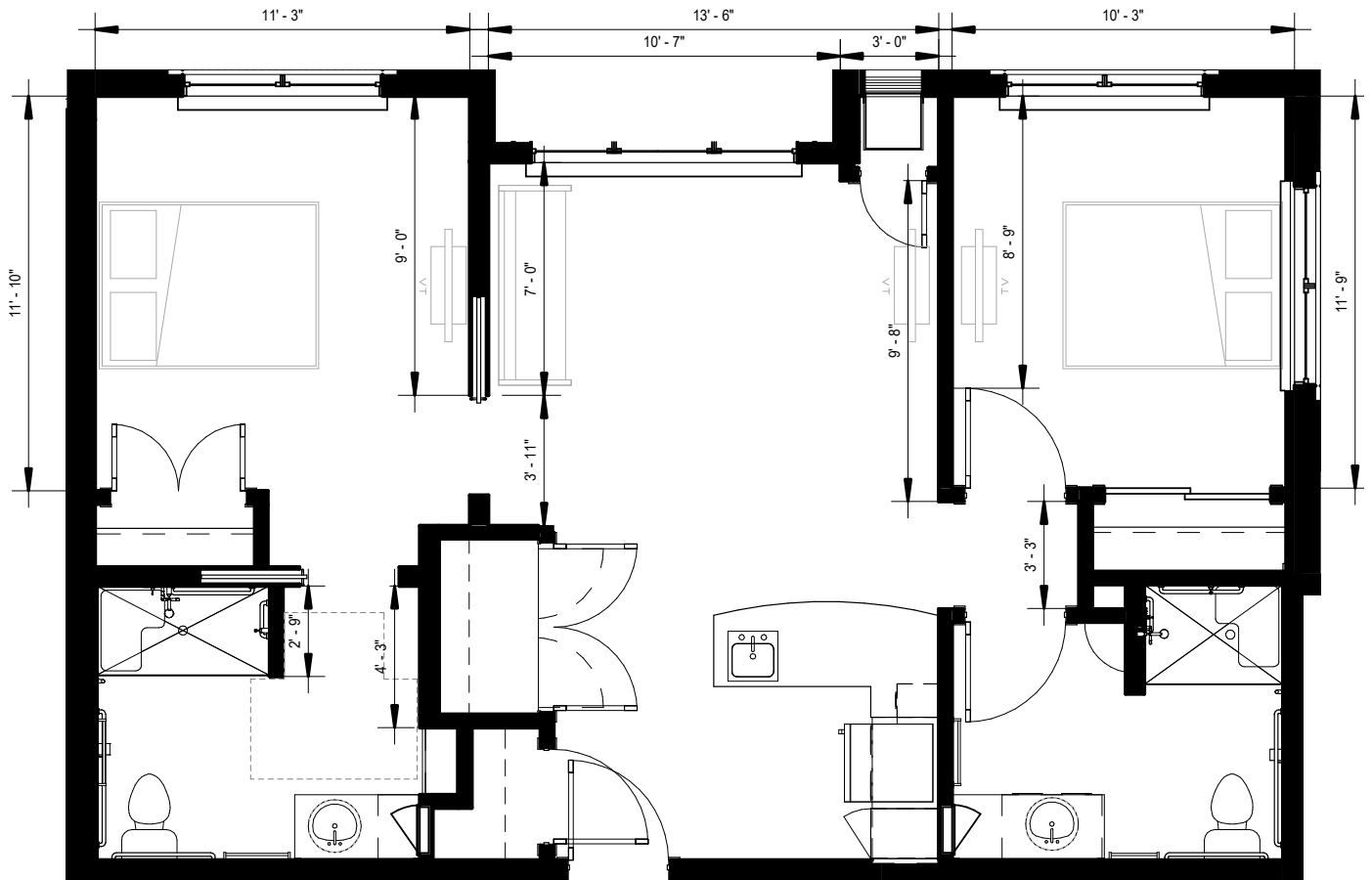


2 Bedroom 1.5 Bath
 Assisted Living
 791 sf (AL-2E)



MorningStar

ASSISTED LIVING & MEMORY CARE
 at JORDAN CREEK



2 Bedroom 2 Bath
 Assisted Living
 820 sf (AL-2B - ACC)



MorningStar

ASSISTED LIVING & MEMORY CARE
 at JORDAN CREEK