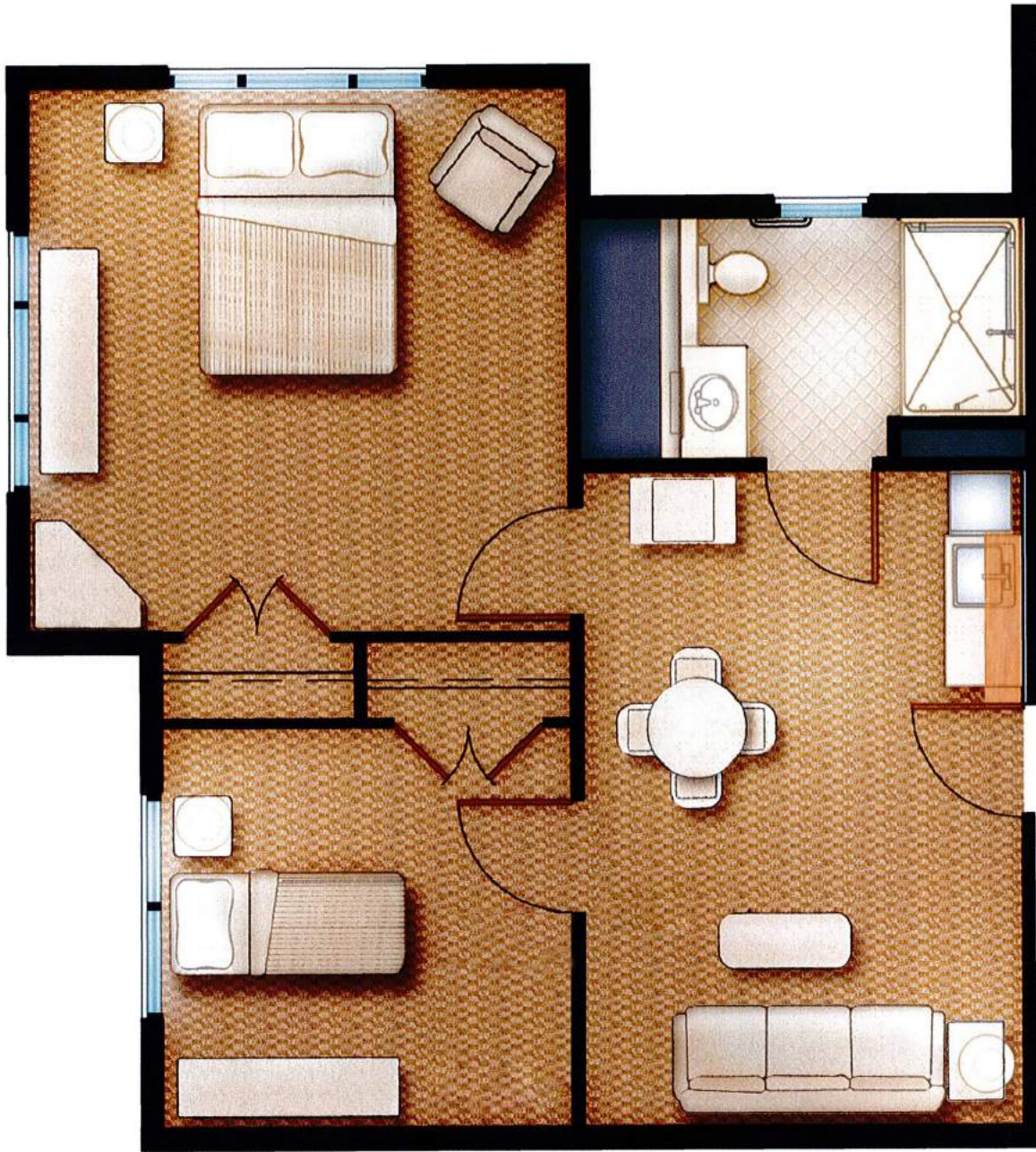


Assisted Living/Memory Care Two-Bedroom:  
545-610 sq ft



**MorningStar**

ASSISTED LIVING & MEMORY CARE  
of LITTLETON



Assisted Living/Memory Care  
Large Two-Bedroom: 704 sq ft, 730 sq ft



**MorningStar**

ASSISTED LIVING & MEMORY CARE  
of LITTLETON