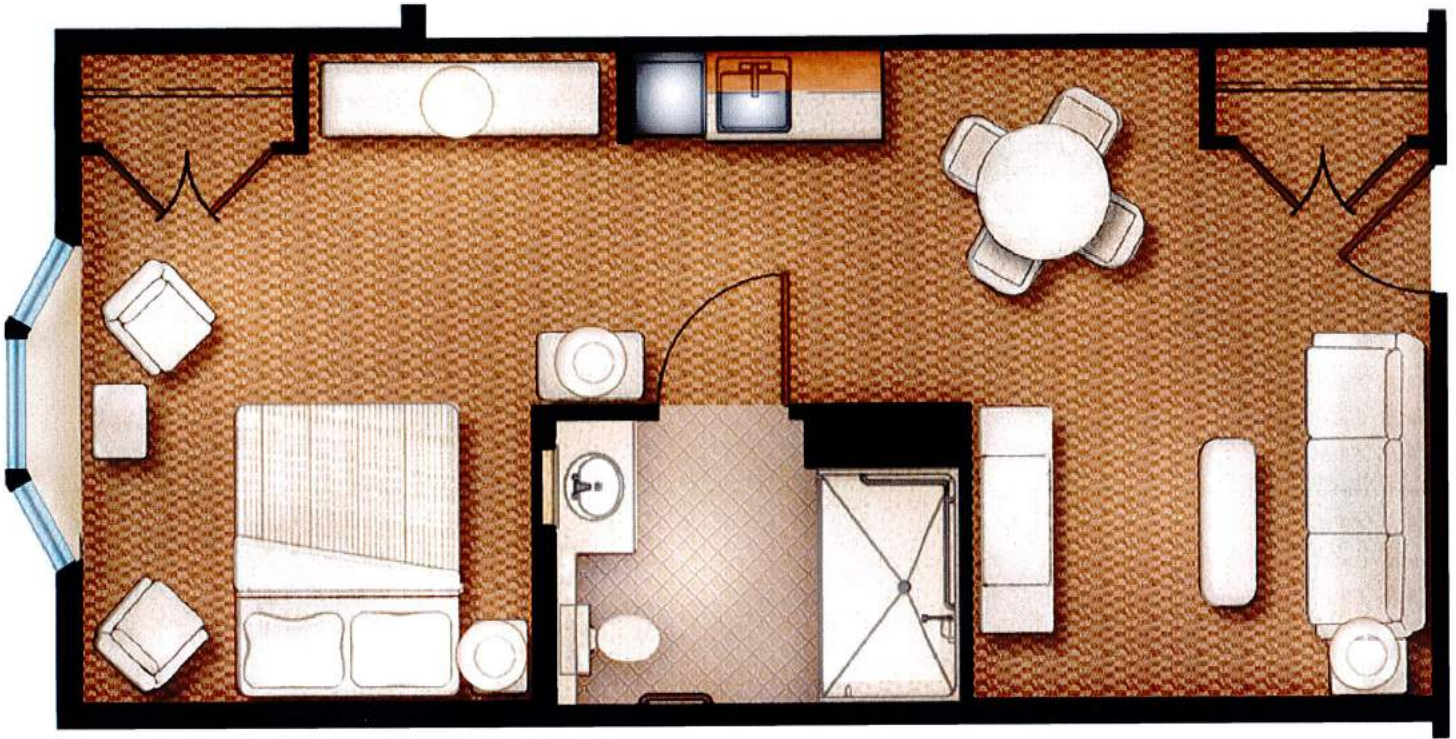


Assisted Living/Memory Care Studio:
327-475 sq ft



MorningStar

ASSISTED LIVING & MEMORY CARE
of LITTLETON

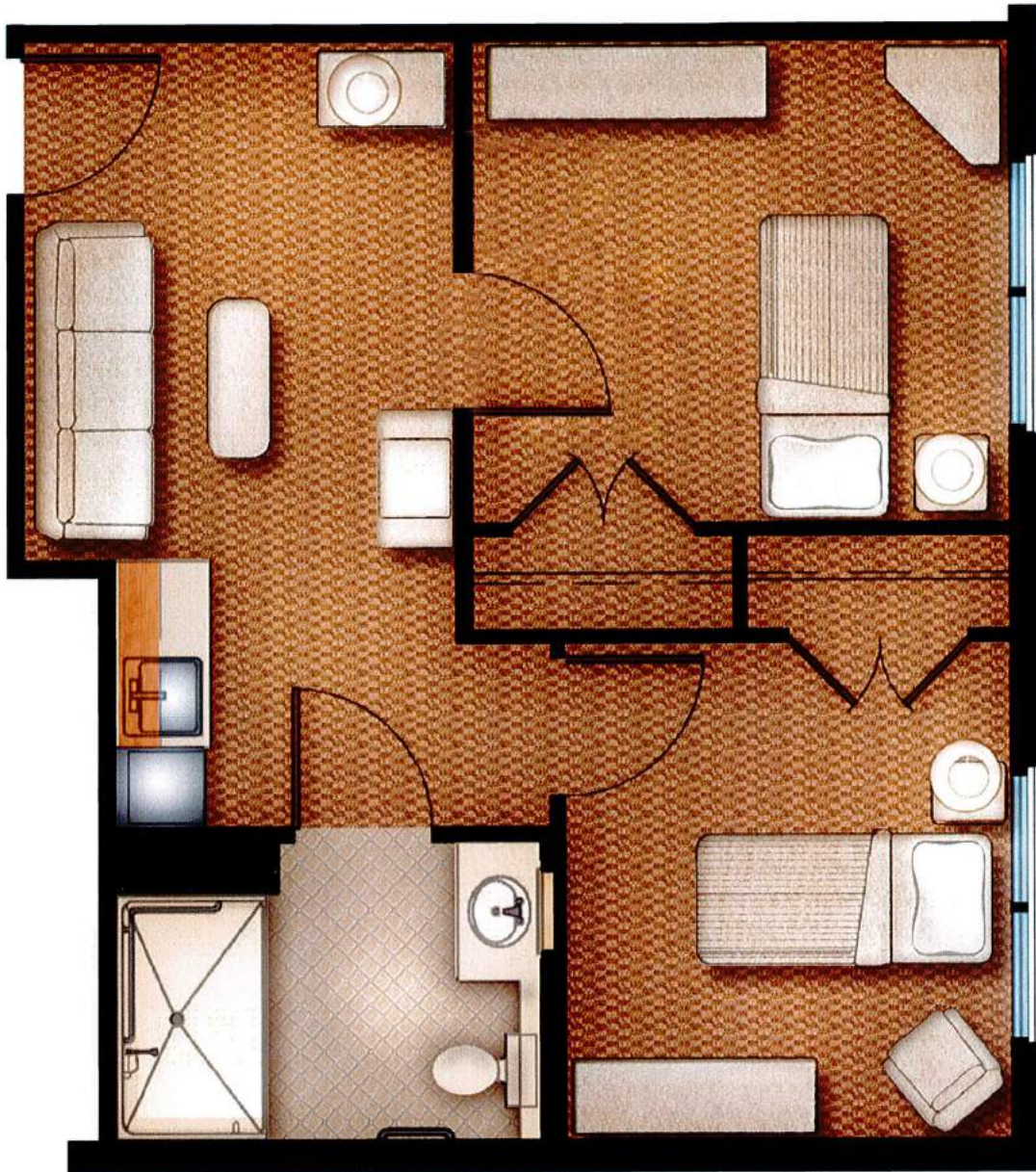


Assisted Living One-Bedroom:
455-550 sq ft



MorningStar

ASSISTED LIVING & MEMORY CARE
of LITTLETON

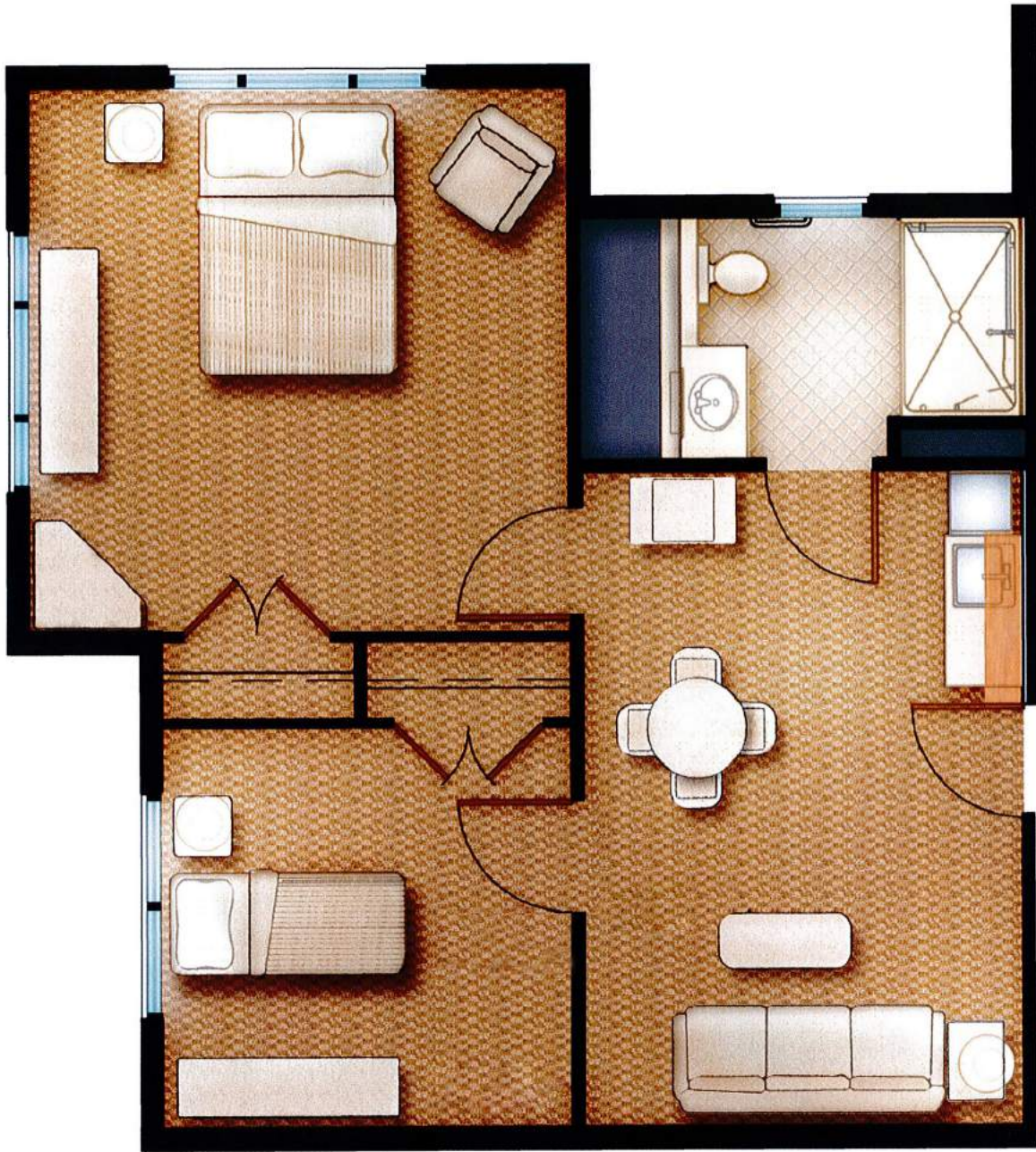


Assisted Living/Memory Care Two-Bedroom:
545-610 sq ft



MorningStar

ASSISTED LIVING & MEMORY CARE
of LITTLETON



Assisted Living/Memory Care
Large Two-Bedroom: 704 sq ft, 730 sq ft



MorningStar

ASSISTED LIVING & MEMORY CARE
of LITTLETON