

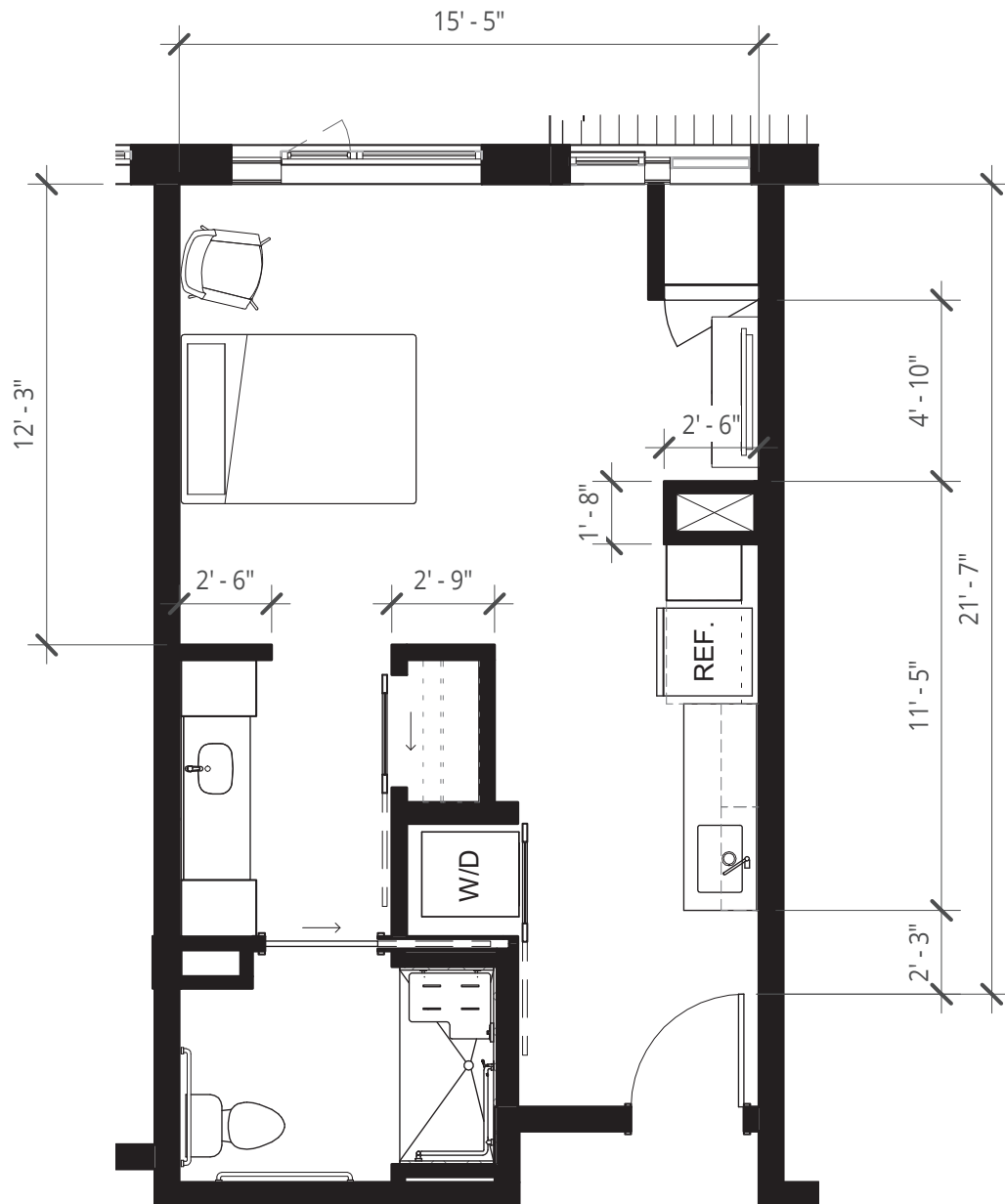
Assisted Living Studio 433 SQ FT



ASSISTED LIVING & MEMORY CARE at LAURELHURST

3100 NE Sandy Blvd • Portland, OR 97232 • 971.544.8100 • MorningStarSeniorLiving.com

Dimensions are for information only. Actual square footage may vary dependent upon location within building.



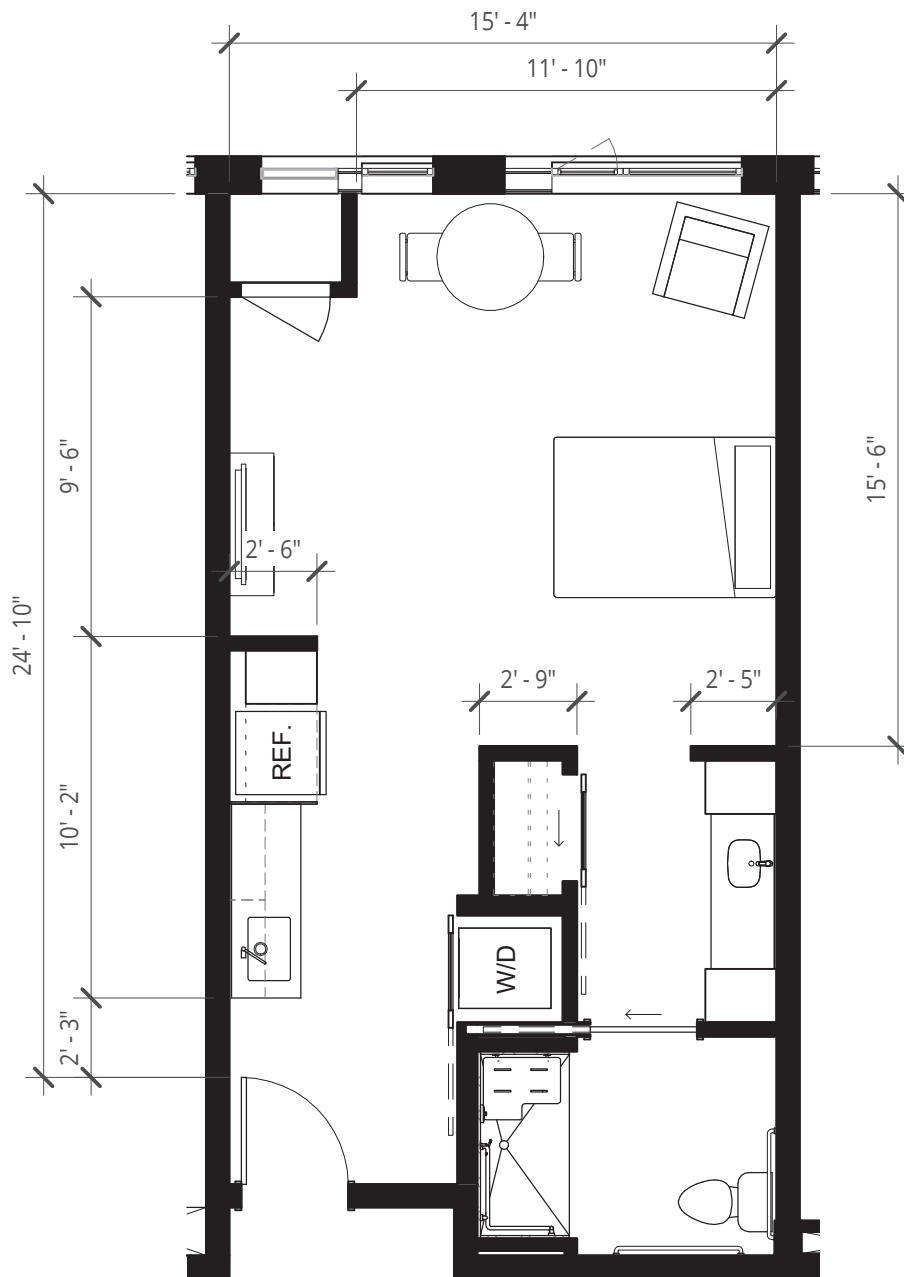
Assisted Living Studio 423 SQ FT



ASSISTED LIVING & MEMORY CARE at LAURELHURST

3100 NE Sandy Blvd • Portland, OR 97232 • 971.544.8100 • MorningStarSeniorLiving.com

Dimensions are for information only. Actual square footage may vary dependent upon location within building.



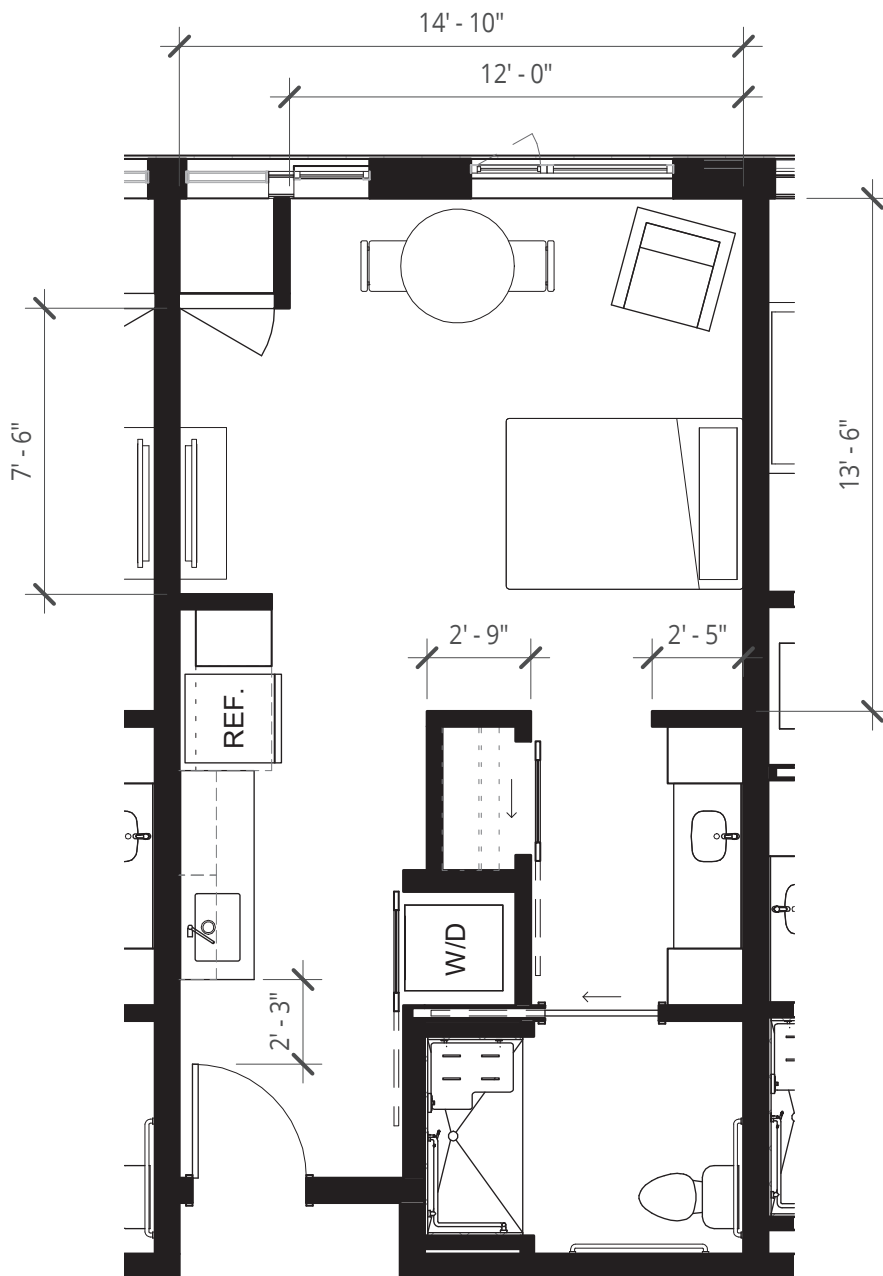
Assisted Living Studio 473 SQ FT



ASSISTED LIVING & MEMORY CARE at LAURELHURST

3100 NE Sandy Blvd • Portland, OR 97232 • 971.544.8100 • MorningStarSeniorLiving.com

Dimensions are for information only. Actual square footage may vary dependent upon location within building.



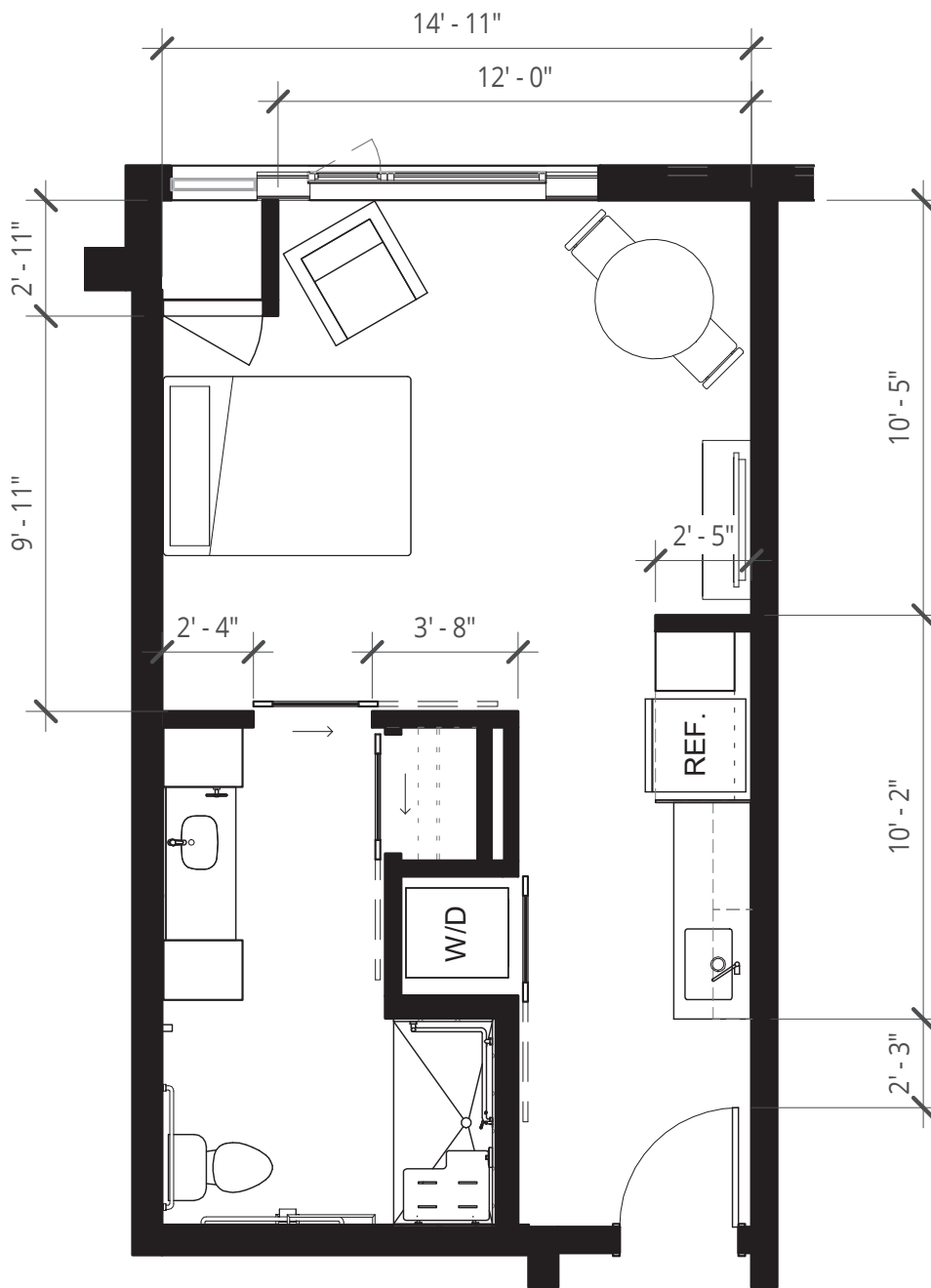
Assisted Living Studio 428 SQ FT



ASSISTED LIVING & MEMORY CARE at LAURELHURST

3100 NE Sandy Blvd • Portland, OR 97232 • 971.544.8100 • MorningStarSeniorLiving.com

Dimensions are for information only. Actual square footage may vary dependent upon location within building.



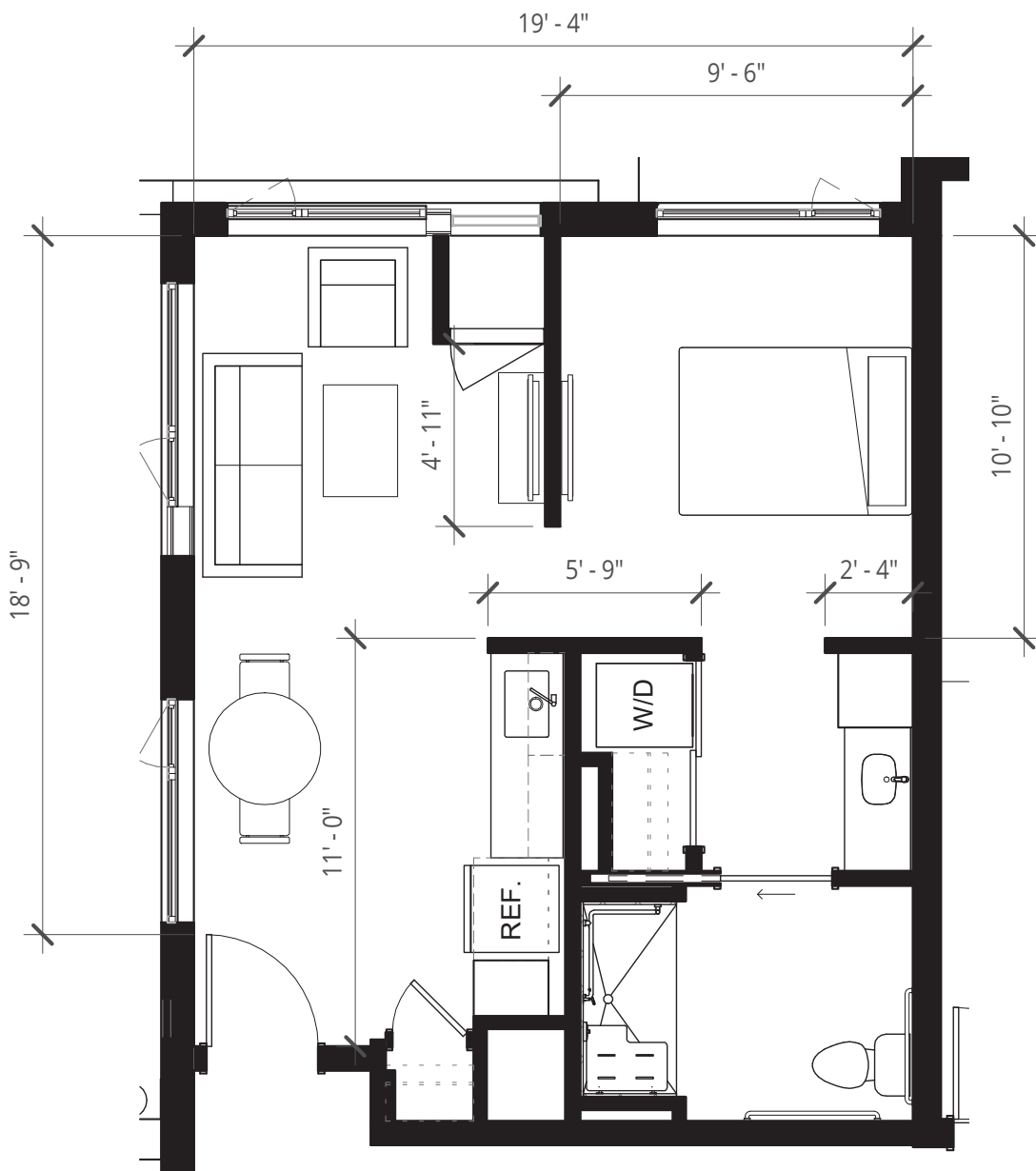
Assisted Living Studio 412 SQ FT



ASSISTED LIVING & MEMORY CARE at LAURELHURST

3100 NE Sandy Blvd • Portland, OR 97232 • 971.544.8100 • MorningStarSeniorLiving.com

Dimensions are for information only. Actual square footage may vary dependent upon location within building.



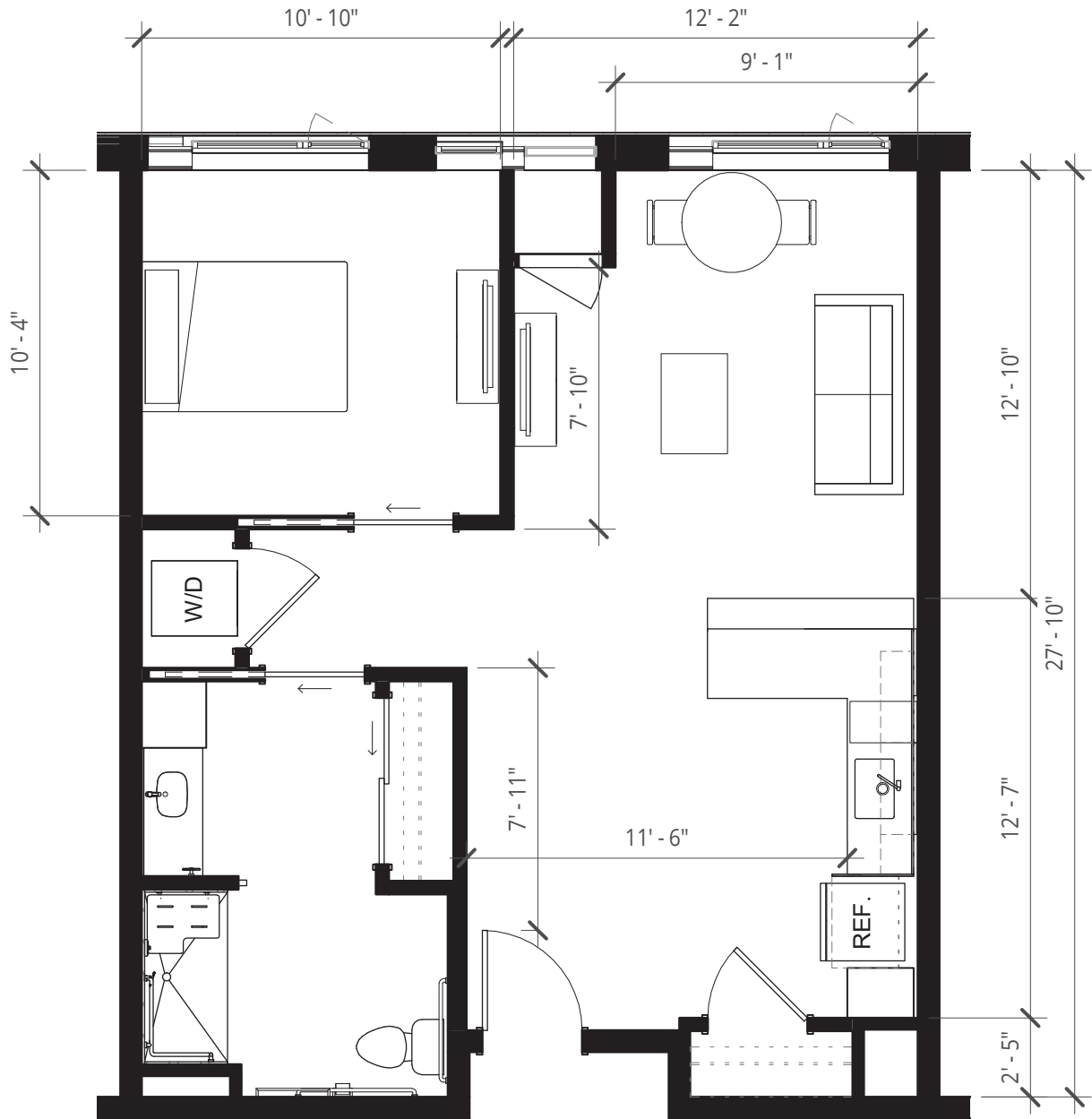
Assisted Living
1 Bed, 1 Bath 478 SQ FT



ASSISTED LIVING & MEMORY CARE at LAURELHURST

3100 NE Sandy Blvd • Portland, OR 97232 • 971.544.8100 • MorningStarSeniorLiving.com

Dimensions are for information only. Actual square footage may vary dependent upon location within building.



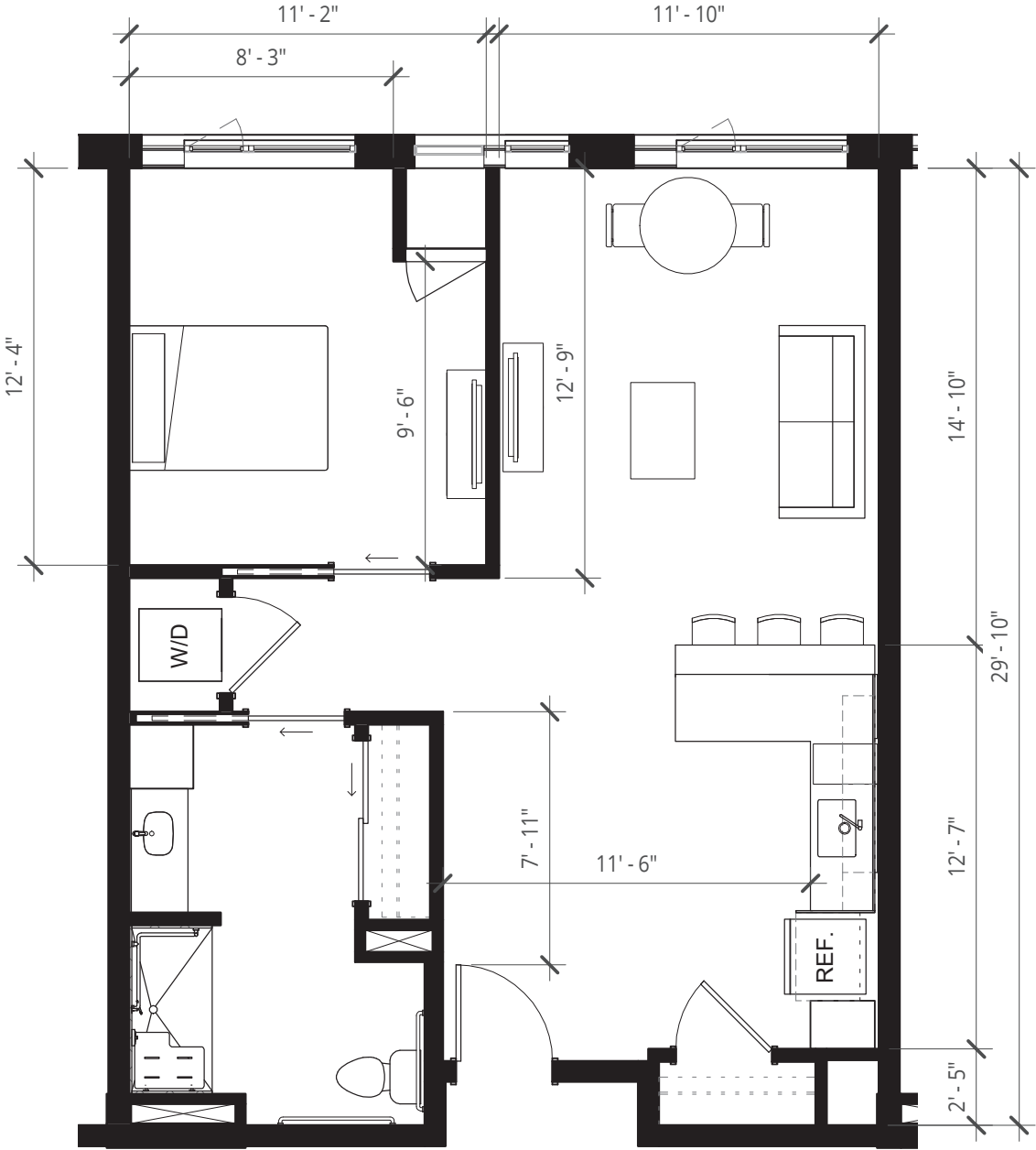
Assisted Living
1 Bed, 1 Bath 670 SQ FT



ASSISTED LIVING & MEMORY CARE at LAURELHURST

3100 NE Sandy Blvd • Portland, OR 97232 • 971.544.8100 • MorningStarSeniorLiving.com

Dimensions are for information only. Actual square footage may vary dependent upon location within building.



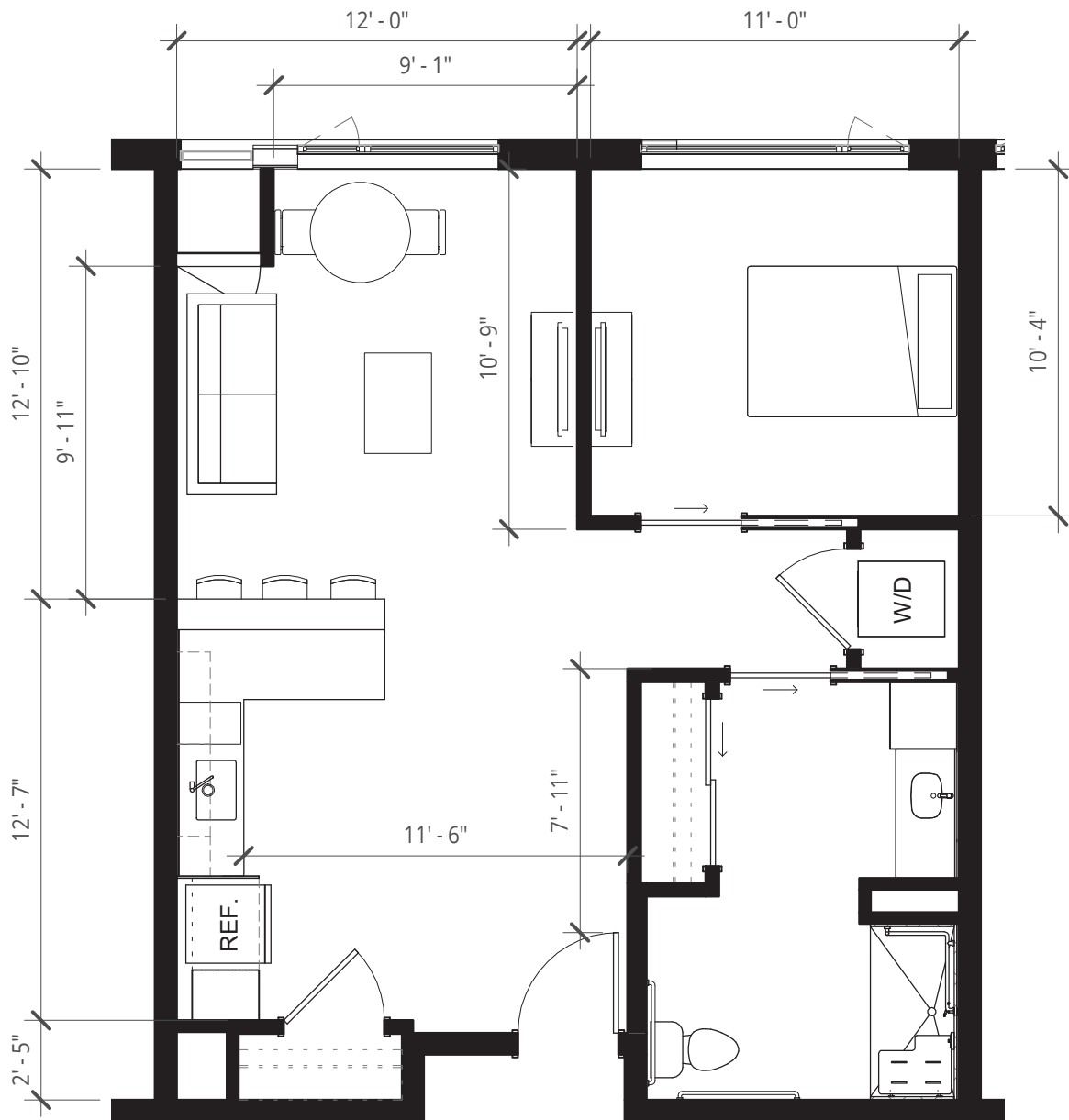
Assisted Living
1 Bed, 1 Bath 718 SQ FT



ASSISTED LIVING & MEMORY CARE at LAURELHURST

3100 NE Sandy Blvd • Portland, OR 97232 • 971.544.8100 • MorningStarSeniorLiving.com

Dimensions are for information only. Actual square footage may vary dependent upon location within building.



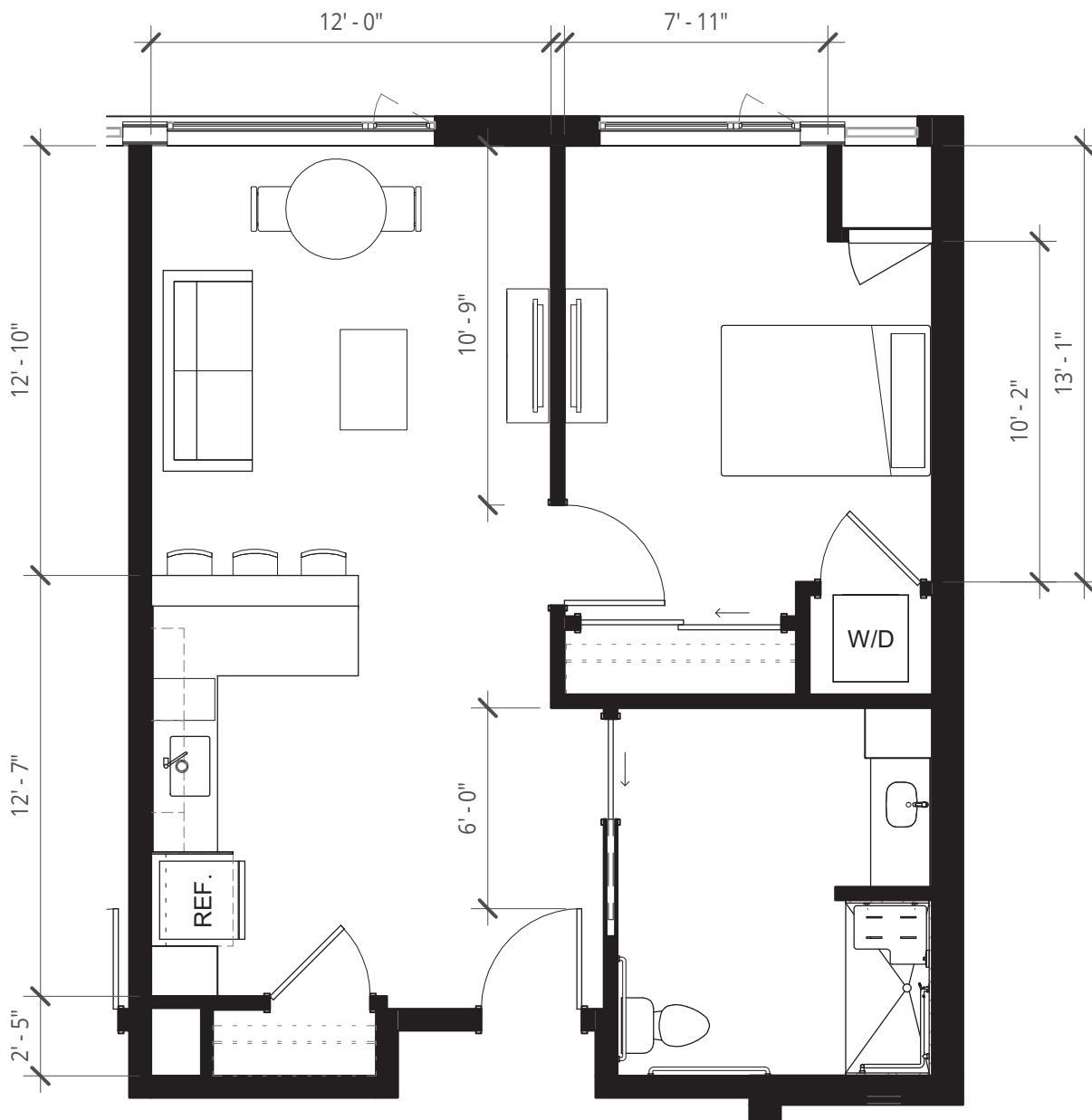
Assisted Living
1 Bed, 1 Bath 670 SQ FT



ASSISTED LIVING & MEMORY CARE at LAURELHURST

3100 NE Sandy Blvd • Portland, OR 97232 • 971.544.8100 • MorningStarSeniorLiving.com

Dimensions are for information only. Actual square footage may vary dependent upon location within building.



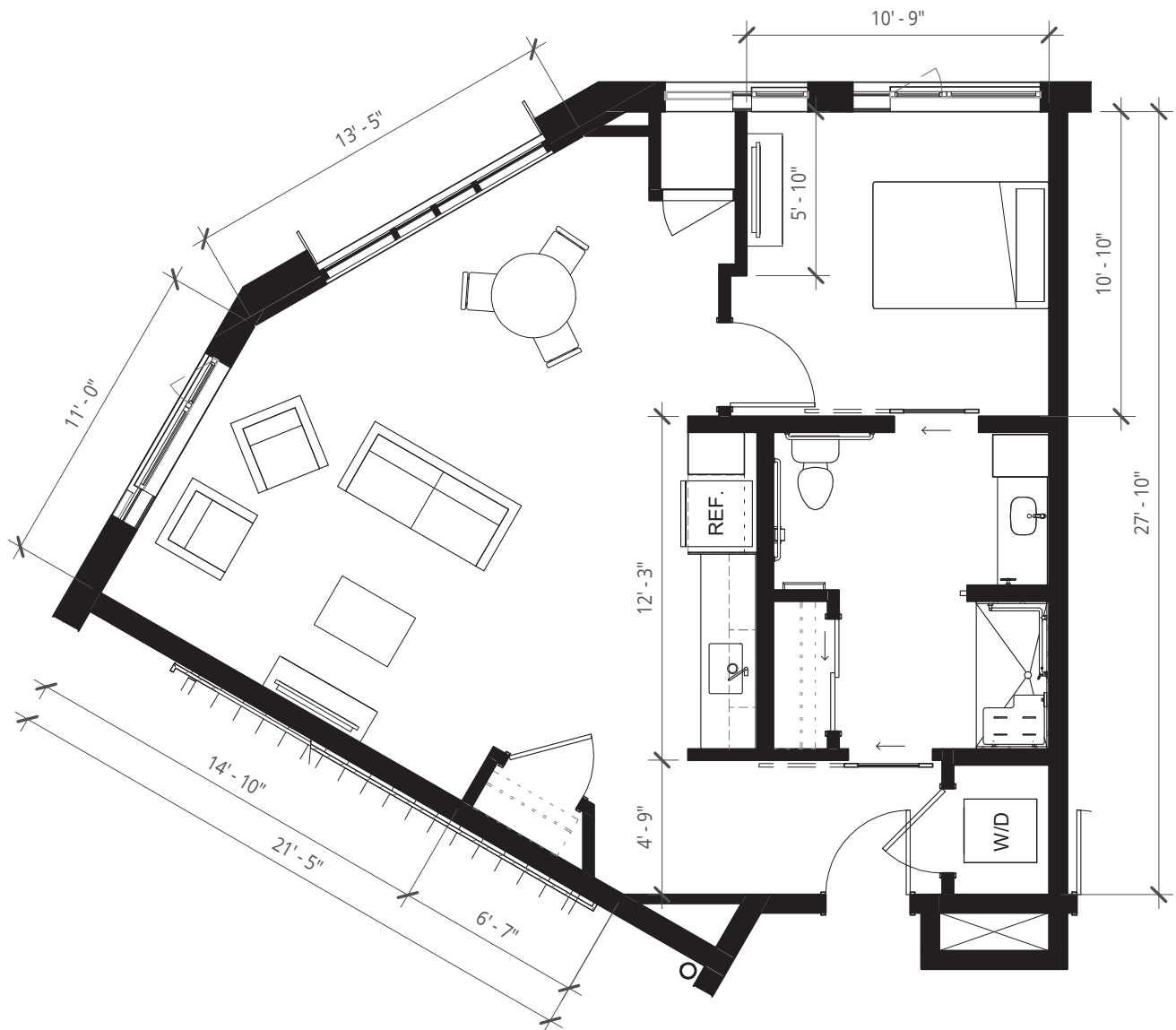
Assisted Living
1 Bed, 1 Bath 670 SQ FT



ASSISTED LIVING & MEMORY CARE at LAURELHURST

3100 NE Sandy Blvd • Portland, OR 97232 • 971.544.8100 • MorningStarSeniorLiving.com

Dimensions are for information only. Actual square footage may vary dependent upon location within building.



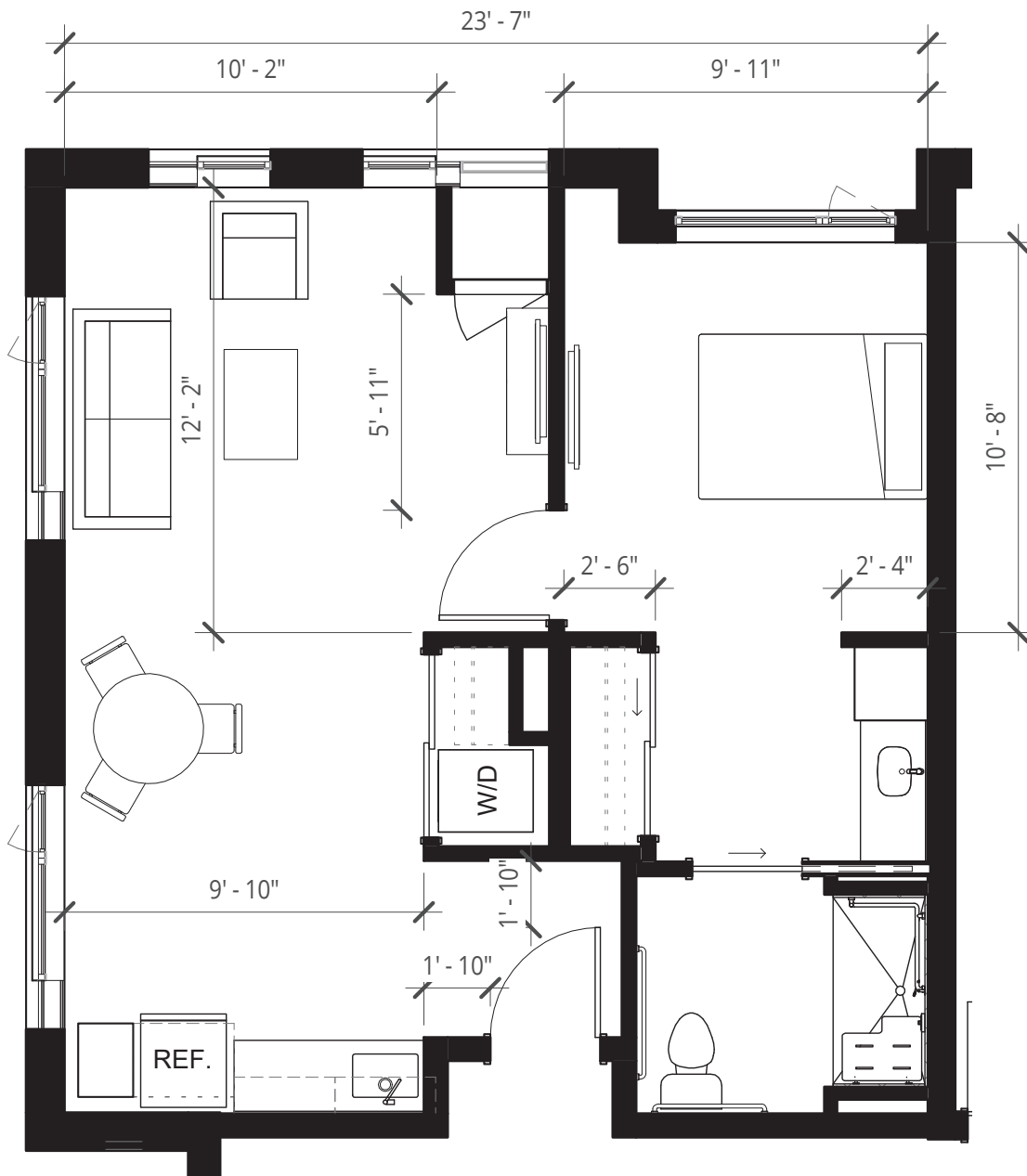
Assisted Living
1 Bed, 1 Bath 758 SQ FT



ASSISTED LIVING & MEMORY CARE at LAURELHURST

3100 NE Sandy Blvd • Portland, OR 97232 • 971.544.8100 • MorningStarSeniorLiving.com

Dimensions are for information only. Actual square footage may vary dependent upon location within building.



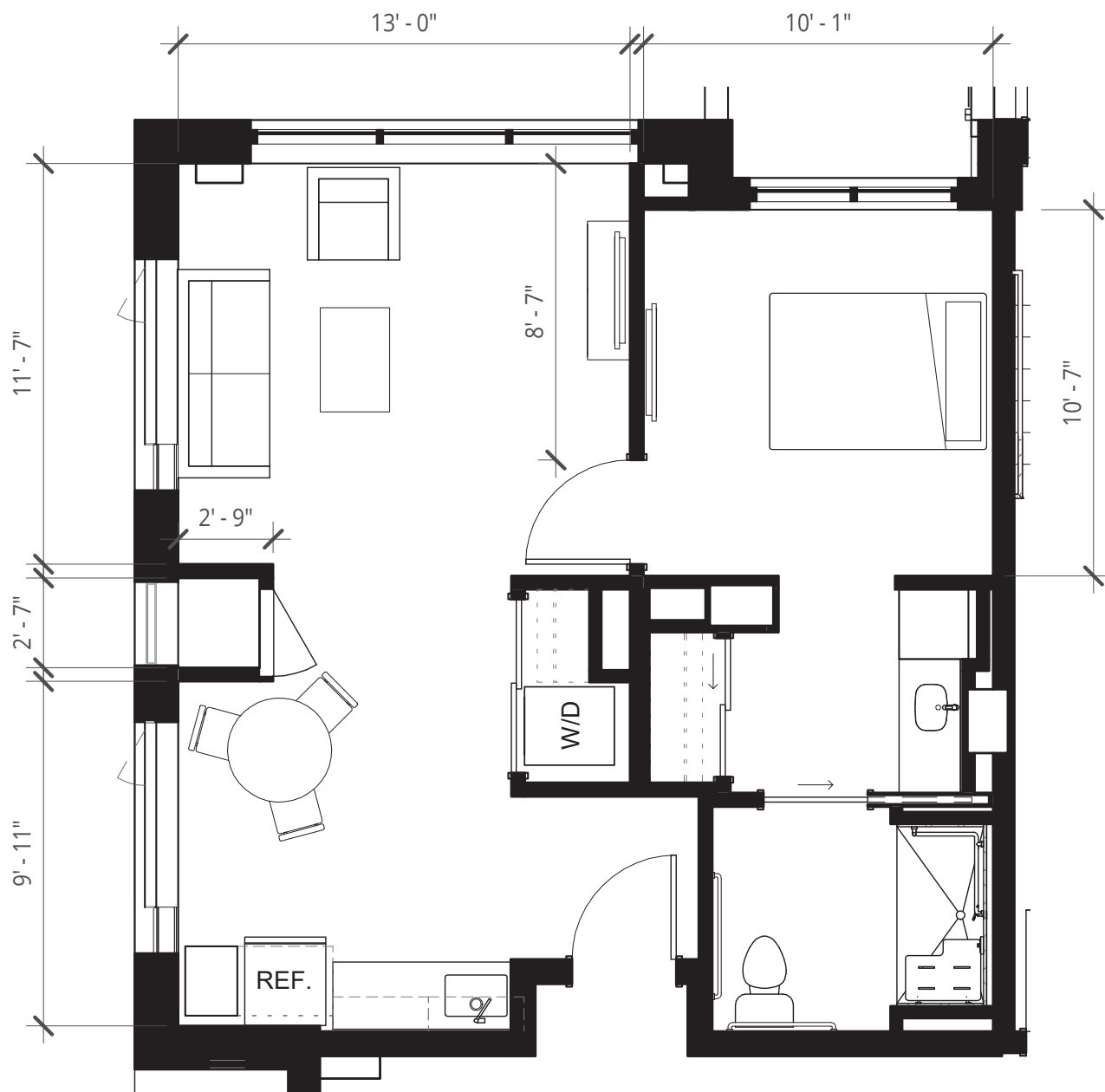
Assisted Living
1 Bed, 1 Bath 605 SQ FT



ASSISTED LIVING & MEMORY CARE at LAURELHURST

3100 NE Sandy Blvd • Portland, OR 97232 • 971.544.8100 • MorningStarSeniorLiving.com

Dimensions are for information only. Actual square footage may vary dependent upon location within building.



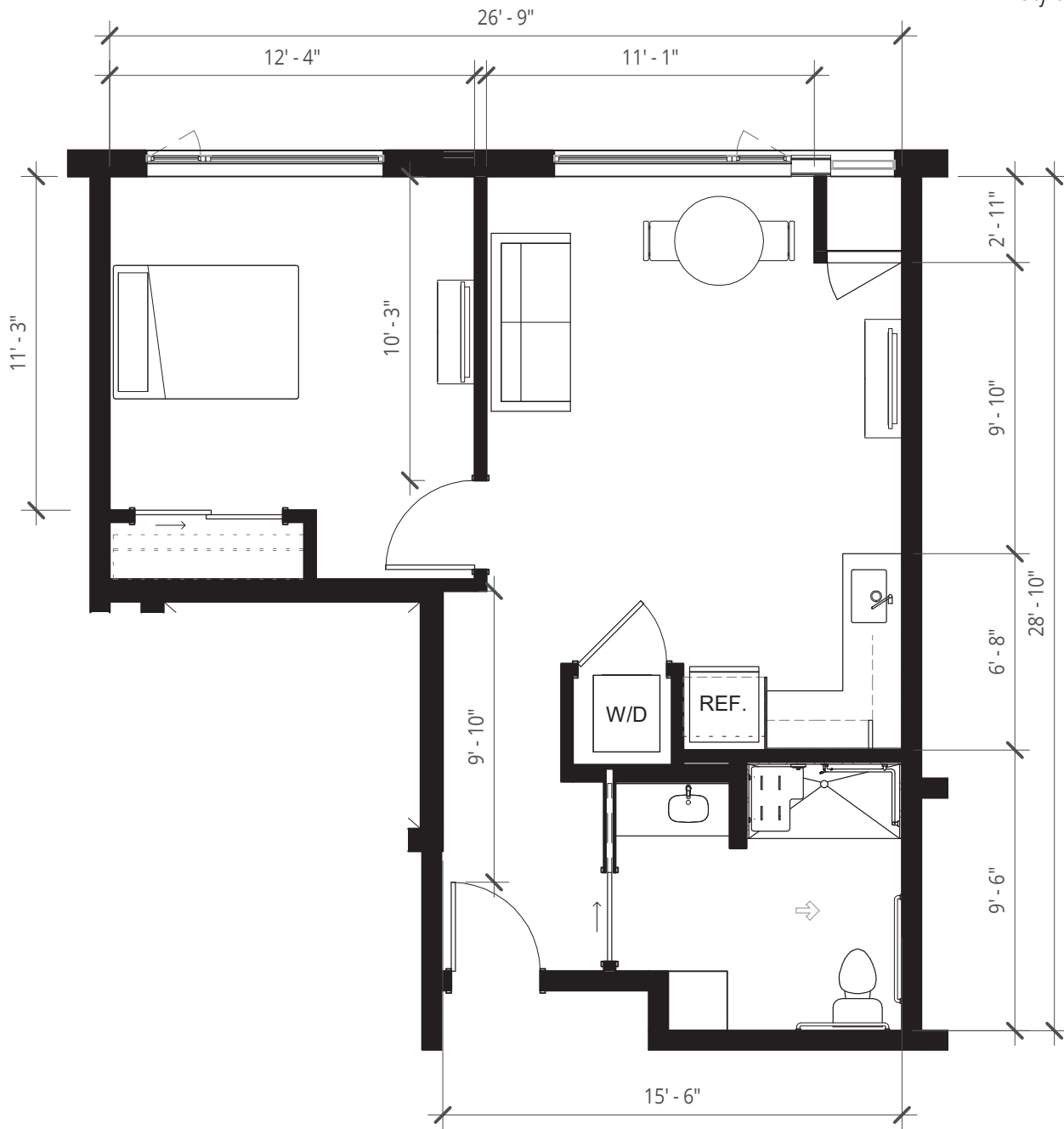
Assisted Living
1 Bed, 1 Bath 598 SQ FT



ASSISTED LIVING & MEMORY CARE at LAURELHURST

3100 NE Sandy Blvd • Portland, OR 97232 • 971.544.8100 • MorningStarSeniorLiving.com

Dimensions are for information only. Actual square footage may vary dependent upon location within building.



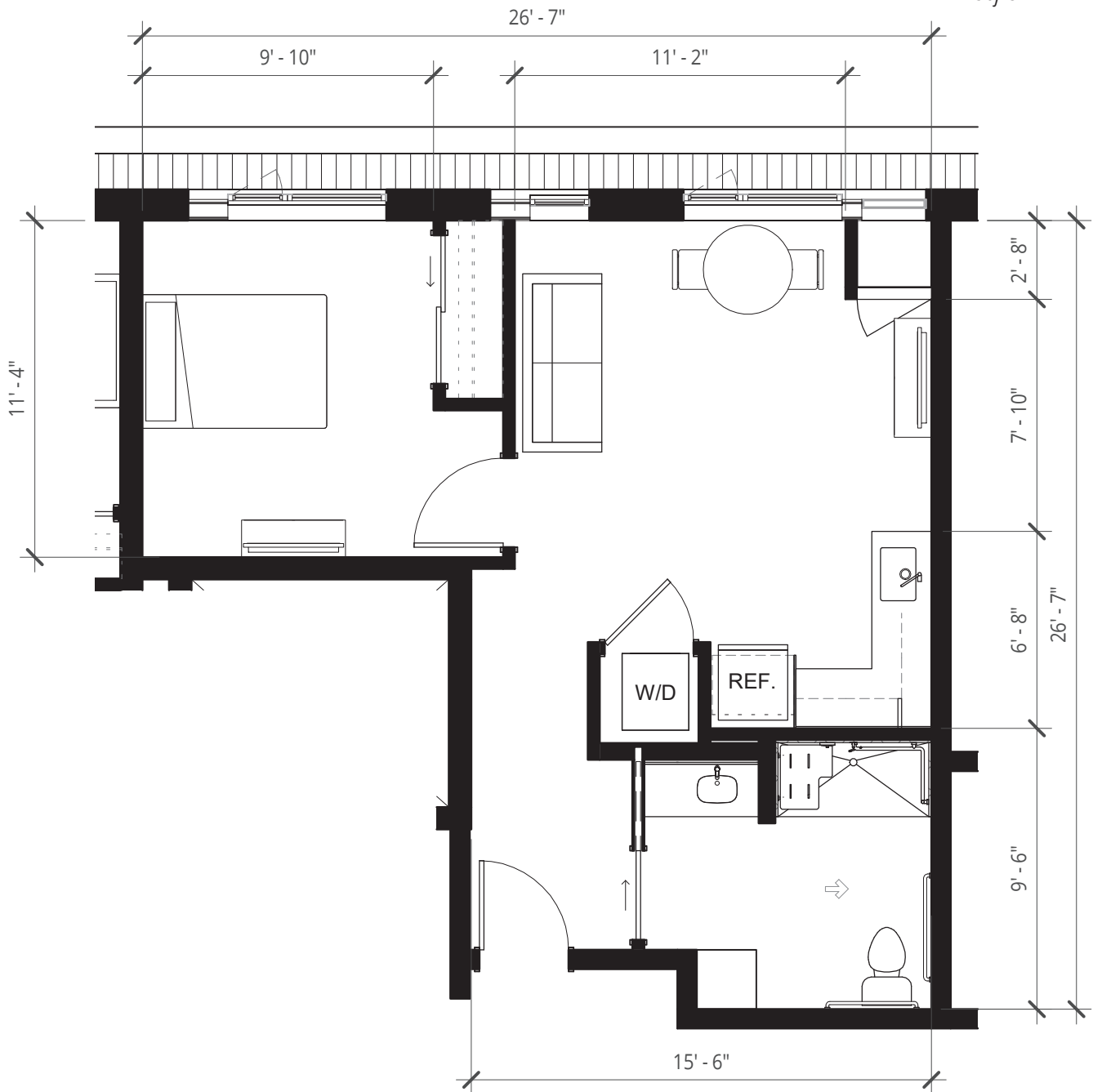
Assisted Living
1 Bed, 1 Bath 621 SQ FT



ASSISTED LIVING & MEMORY CARE at LAURELHURST

3100 NE Sandy Blvd • Portland, OR 97232 • 971.544.8100 • MorningStarSeniorLiving.com

Dimensions are for information only. Actual square footage may vary dependent upon location within building.



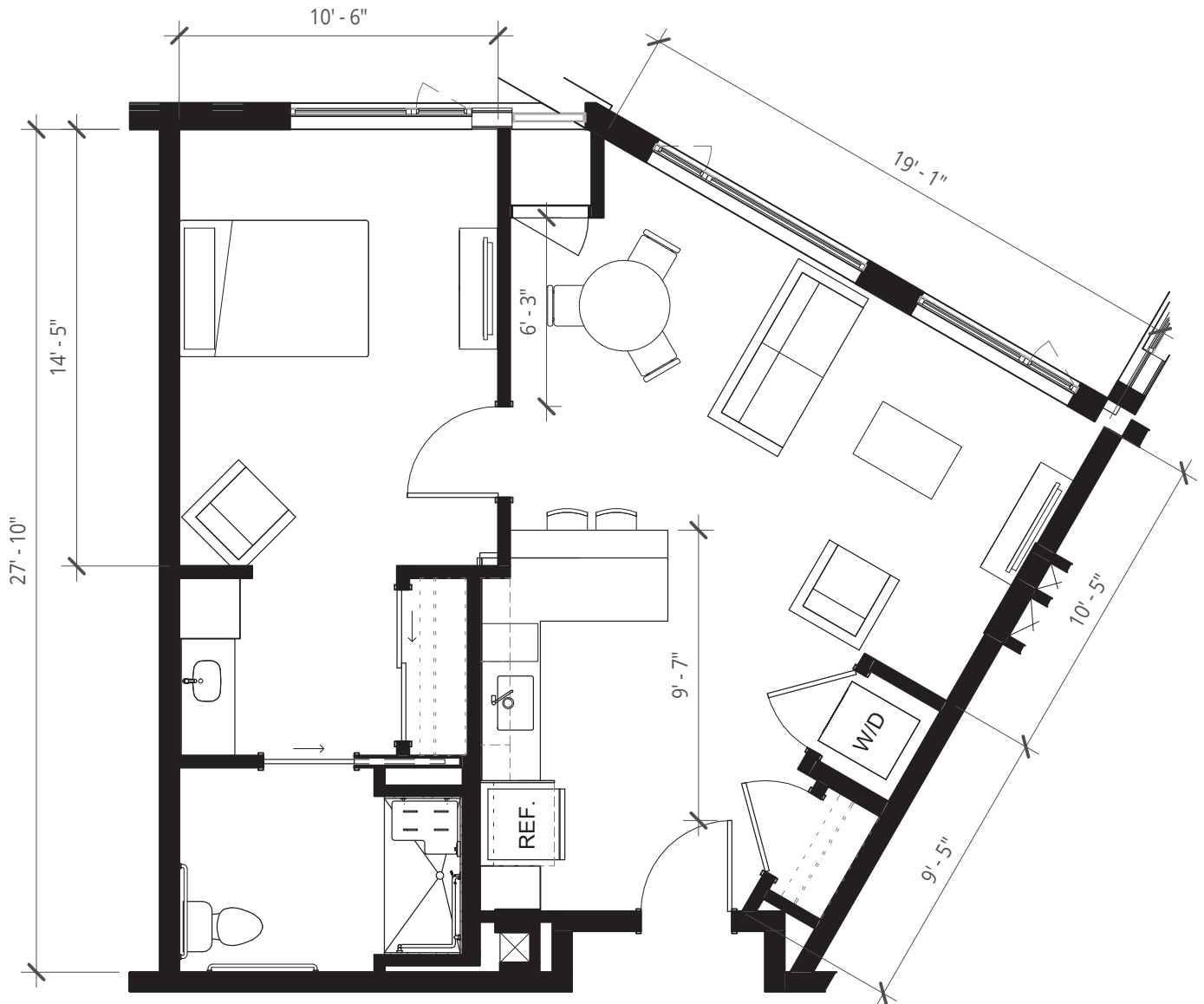
Assisted Living
1 Bed, 1 Bath 558 SQ FT



ASSISTED LIVING & MEMORY CARE at LAURELHURST

3100 NE Sandy Blvd • Portland, OR 97232 • 971.544.8100 • MorningStarSeniorLiving.com

Dimensions are for information only. Actual square footage may vary dependent upon location within building.



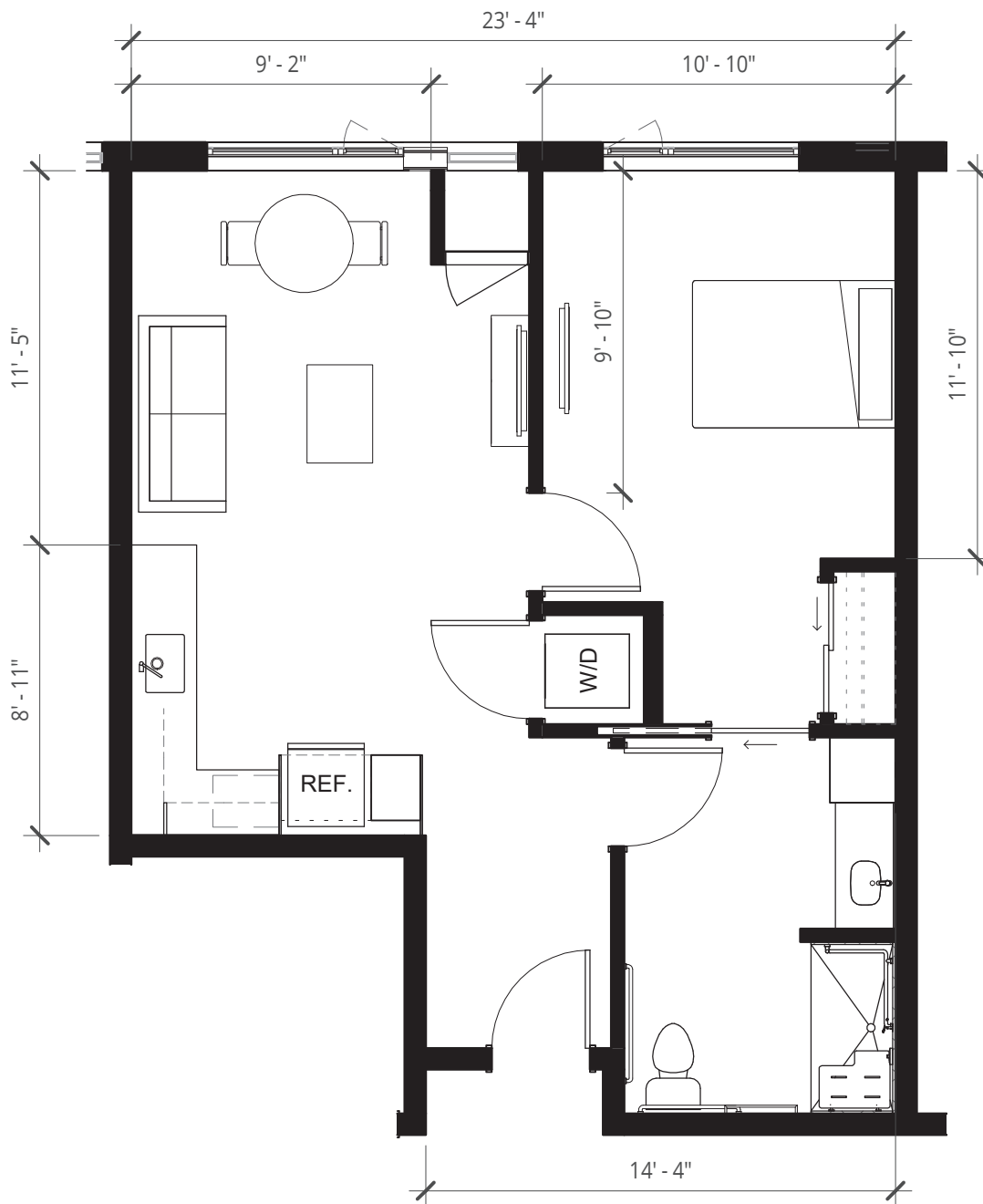
Assisted Living
1 Bed, 1 Bath 692 SQ FT



ASSISTED LIVING & MEMORY CARE at LAURELHURST

3100 NE Sandy Blvd • Portland, OR 97232 • 971.544.8100 • MorningStarSeniorLiving.com

Dimensions are for information only. Actual square footage may vary dependent upon location within building.



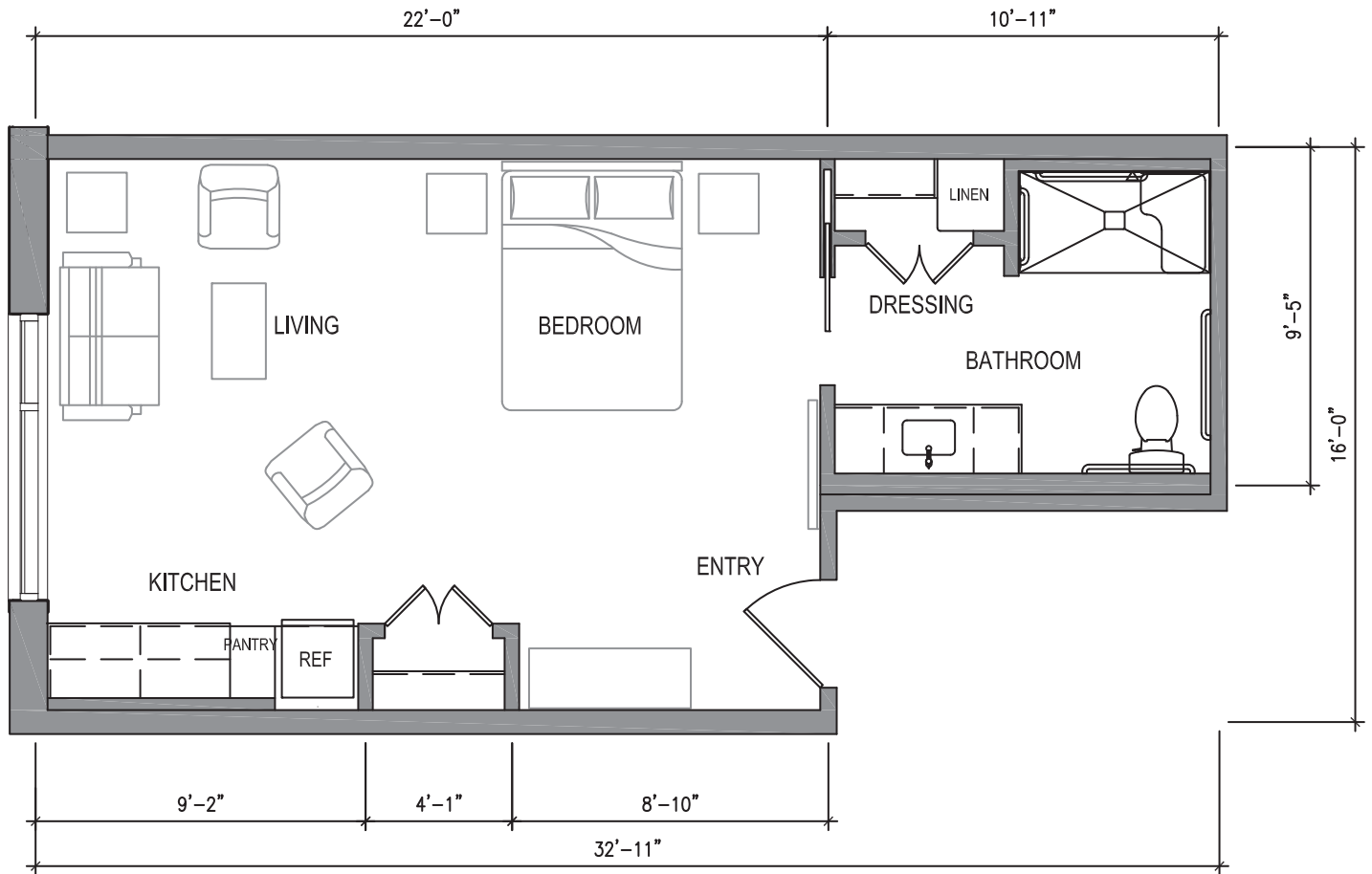
Assisted Living
1 Bed, 1 Bath 618 SQ FT



ASSISTED LIVING & MEMORY CARE at LAURELHURST

3100 NE Sandy Blvd • Portland, OR 97232 • 971.544.8100 • MorningStarSeniorLiving.com

Dimensions are for information only. Actual square footage may vary dependent upon location within building.



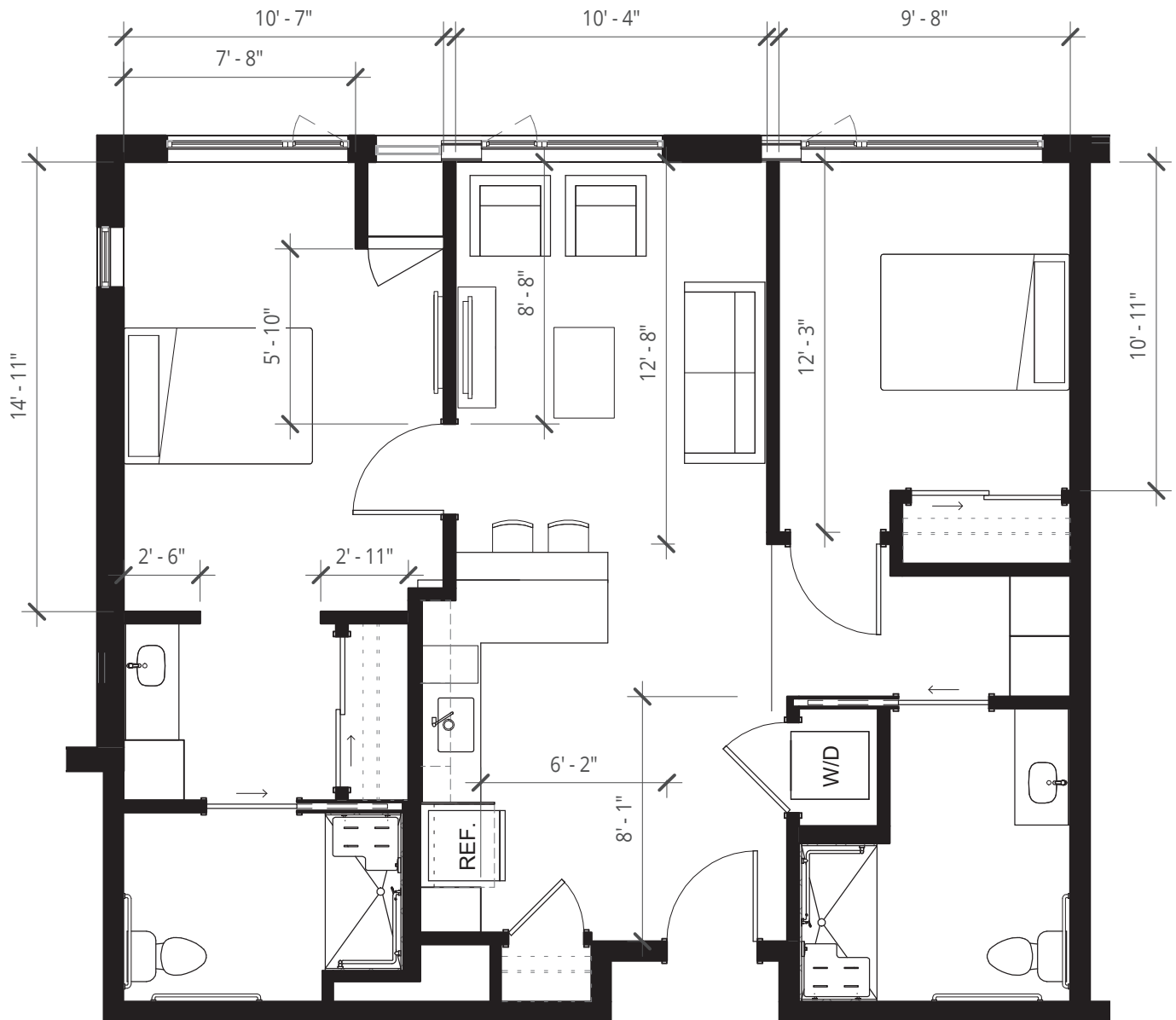
Assisted Living
1 Bed, 1 Bath 475 SQ FT



ASSISTED LIVING & MEMORY CARE at LAURELHURST

3100 NE Sandy Blvd • Portland, OR 97232 • 971.544.8100 • MorningStarSeniorLiving.com

Dimensions are for information only. Actual square footage may vary dependent upon location within building.



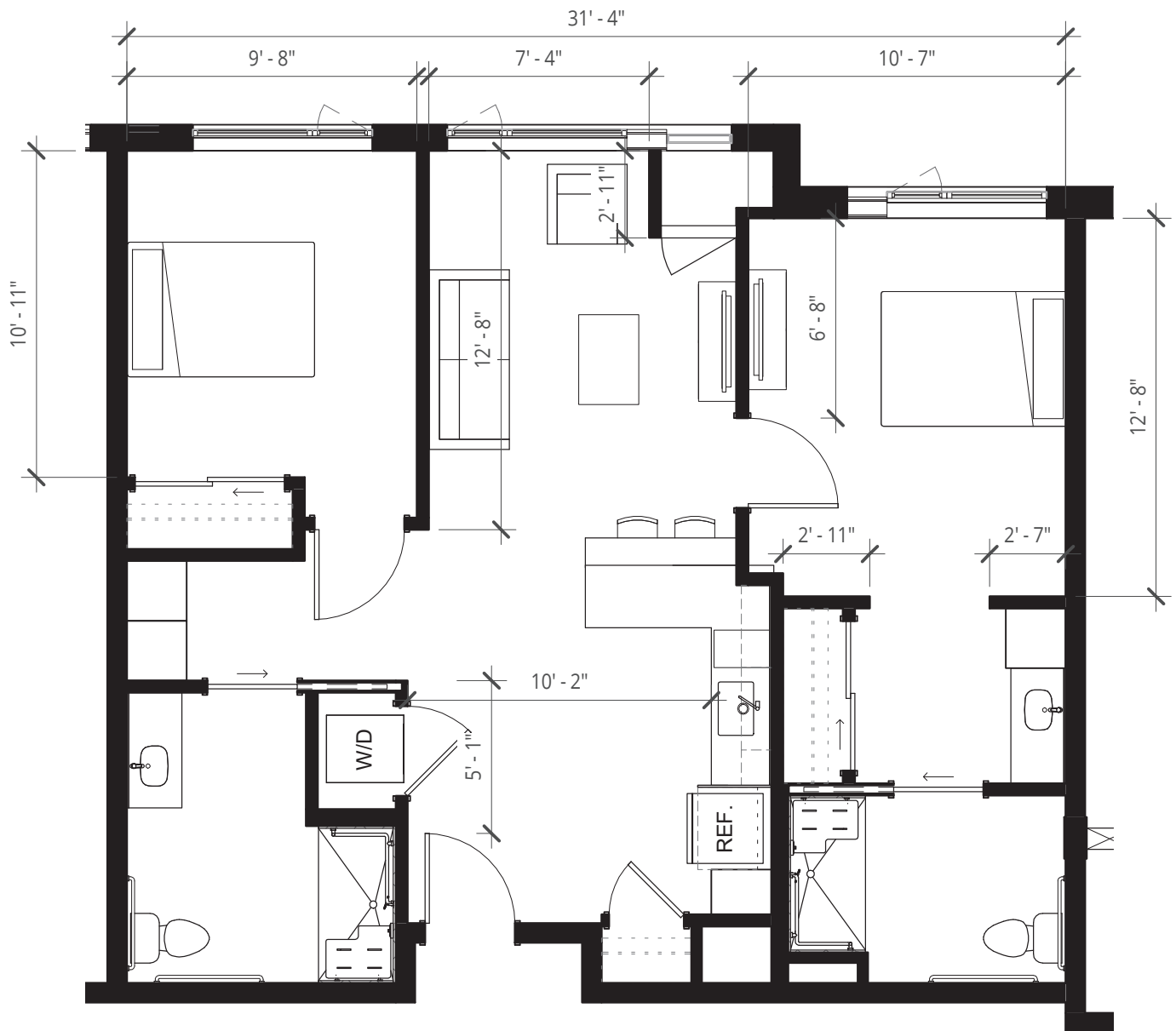
Assisted Living
2 Bed, 2 Bath 898 SQ FT



ASSISTED LIVING & MEMORY CARE at LAURELHURST

3100 NE Sandy Blvd • Portland, OR 97232 • 971.544.8100 • MorningStarSeniorLiving.com

Dimensions are for information only. Actual square footage may vary dependent upon location within building.



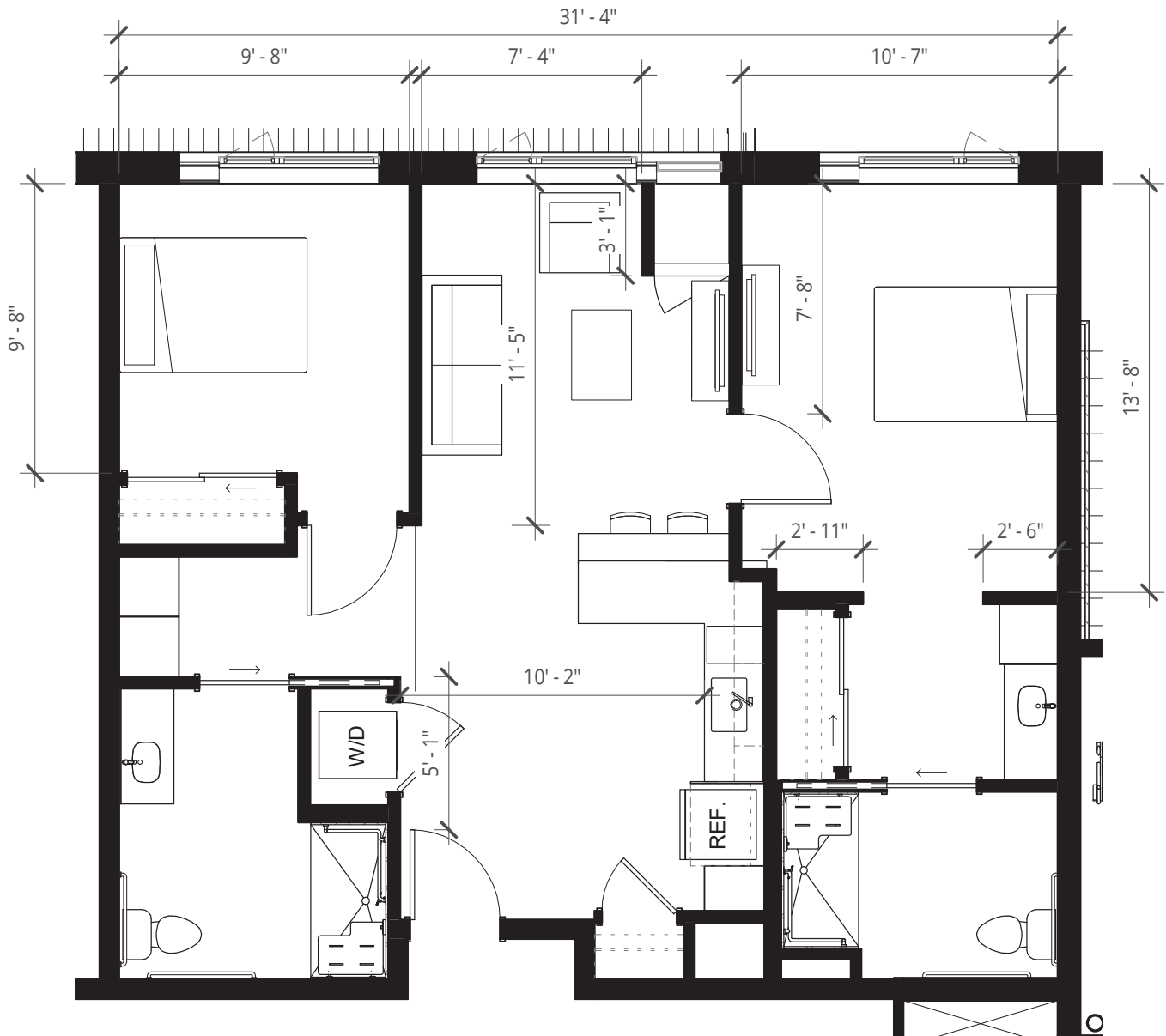
Assisted Living
2 Bed, 2 Bath 876 SQ FT



ASSISTED LIVING & MEMORY CARE at LAURELHURST

3100 NE Sandy Blvd • Portland, OR 97232 • 971.544.8100 • MorningStarSeniorLiving.com

Dimensions are for information only. Actual square footage may vary dependent upon location within building.



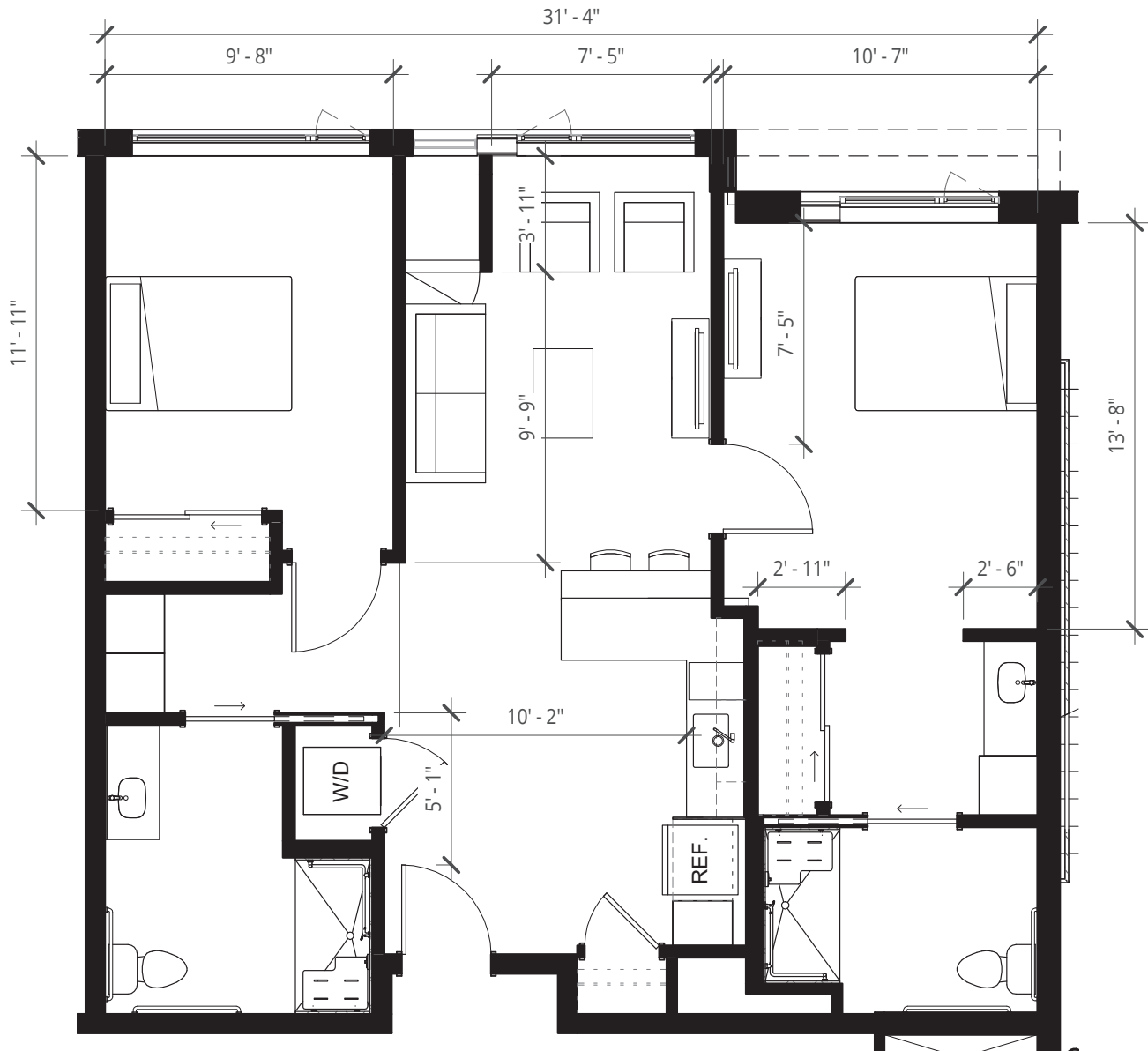
Assisted Living
2 Bed, 2 Bath 858 SQ FT



ASSISTED LIVING & MEMORY CARE at LAURELHURST

3100 NE Sandy Blvd • Portland, OR 97232 • 971.544.8100 • MorningStarSeniorLiving.com

Dimensions are for information only. Actual square footage may vary dependent upon location within building.



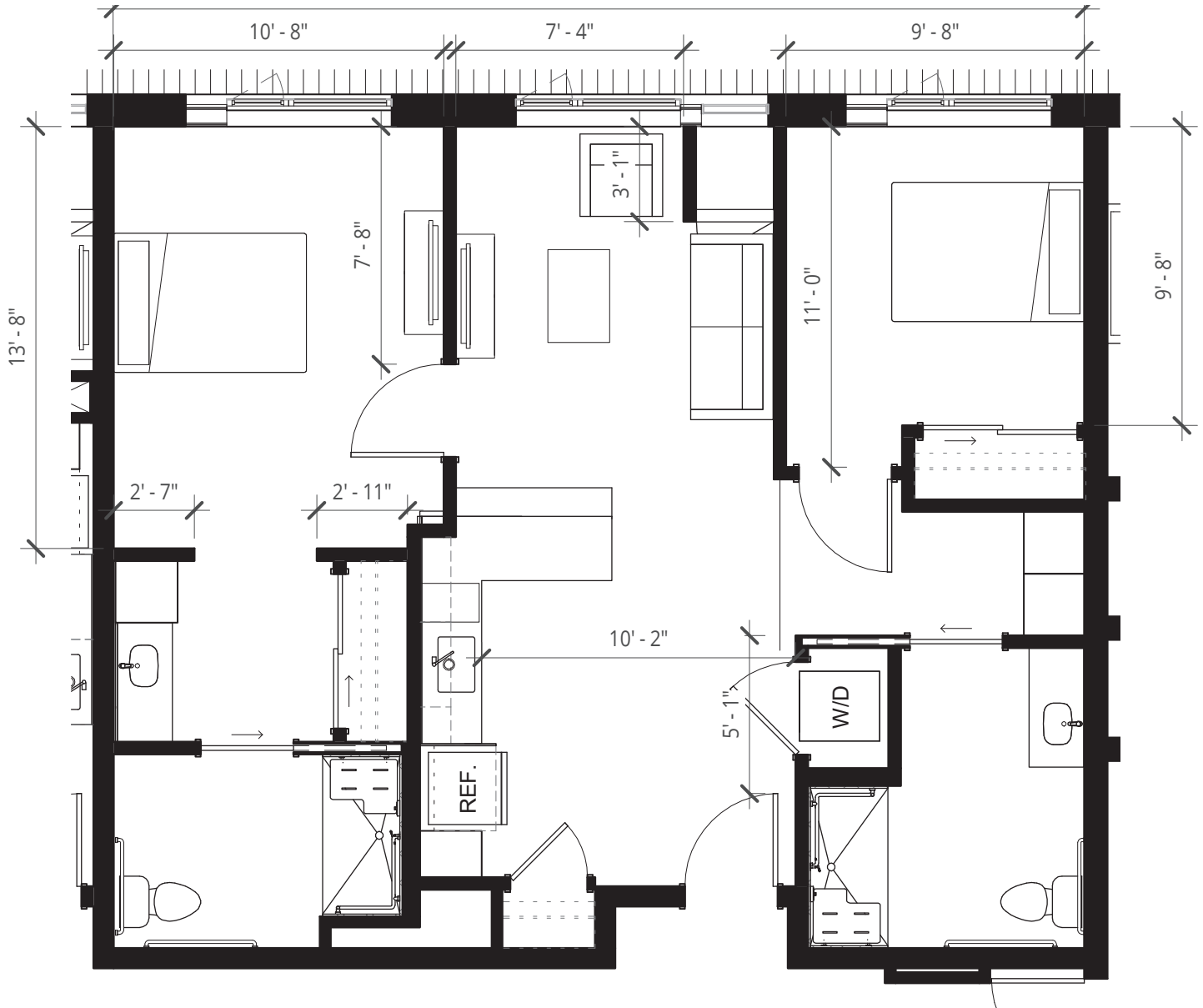
Assisted Living
2 Bed, 2 Bath 905 SQ FT



ASSISTED LIVING & MEMORY CARE at LAURELHURST

3100 NE Sandy Blvd • Portland, OR 97232 • 971.544.8100 • MorningStarSeniorLiving.com

Dimensions are for information only. Actual square footage may vary dependent upon location within building.



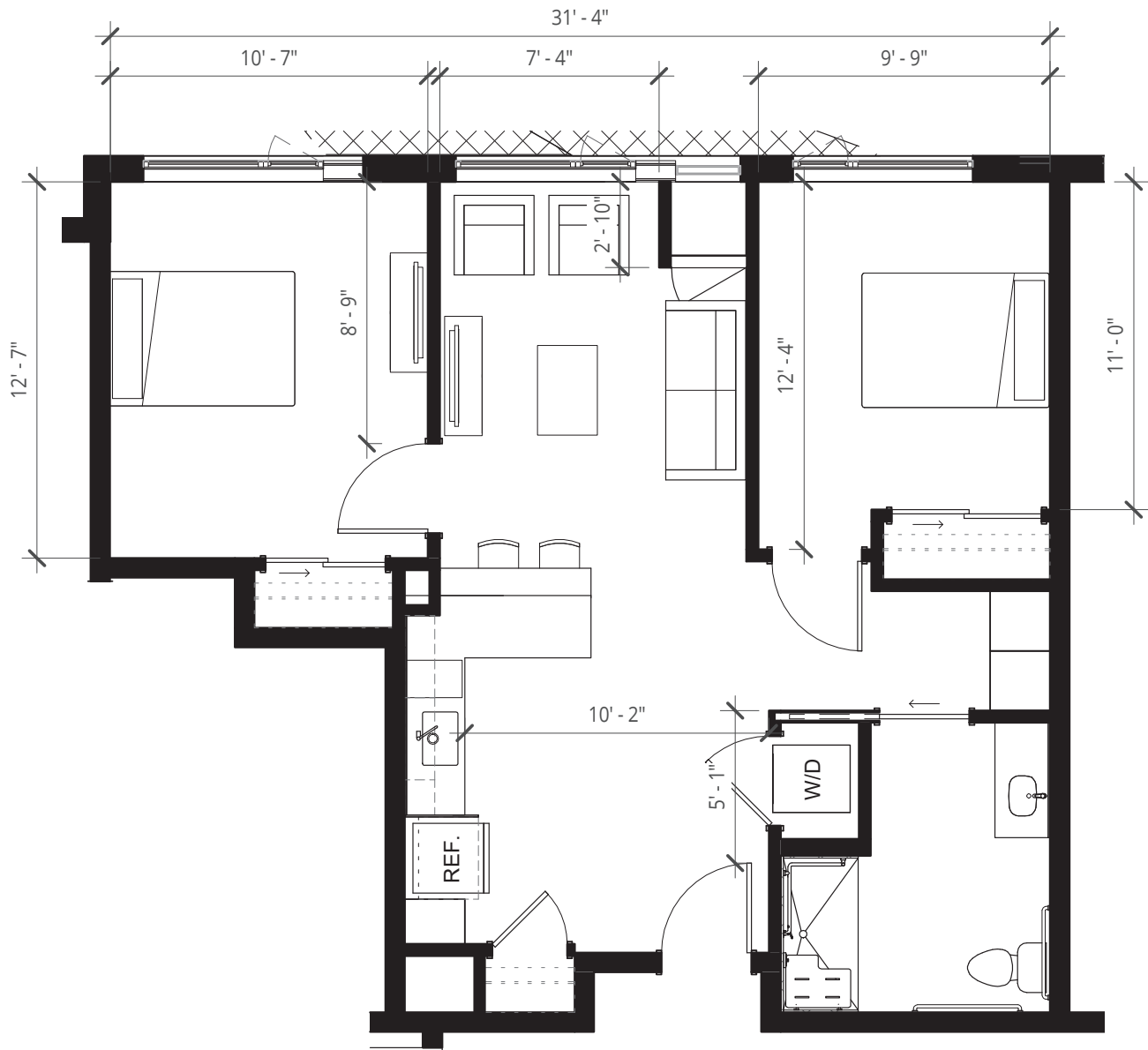
Assisted Living
2 Bed, 2 Bath 860 SQ FT



ASSISTED LIVING & MEMORY CARE at LAURELHURST

3100 NE Sandy Blvd • Portland, OR 97232 • 971.544.8100 • MorningStarSeniorLiving.com

Dimensions are for information only. Actual square footage may vary dependent upon location within building.



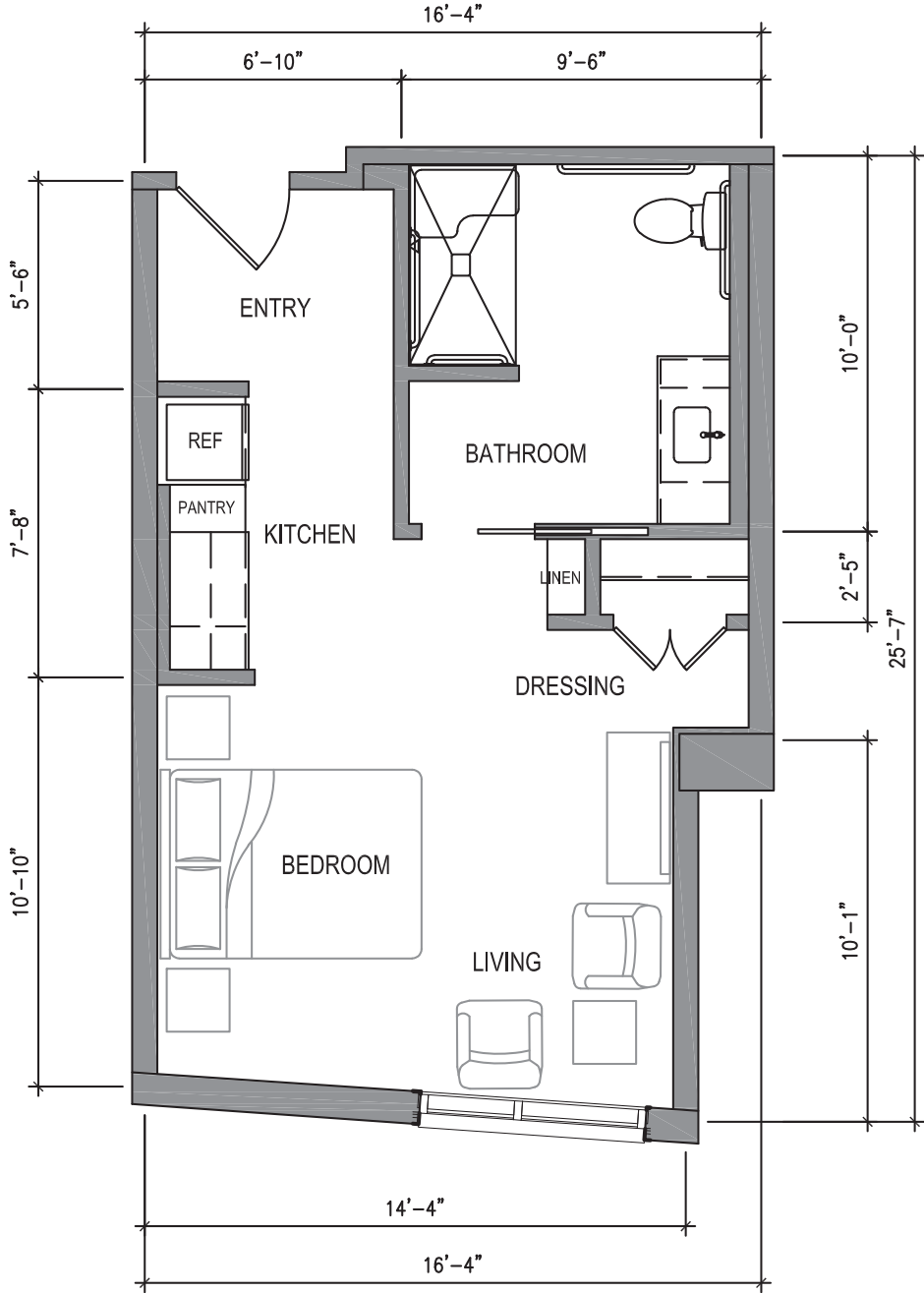
Assisted Living
2 Bed, 1 Bath 750 SQ FT



ASSISTED LIVING & MEMORY CARE at LAURELHURST

3100 NE Sandy Blvd • Portland, OR 97232 • 971.544.8100 • MorningStarSeniorLiving.com

Dimensions are for information only. Actual square footage may vary dependent upon location within building.



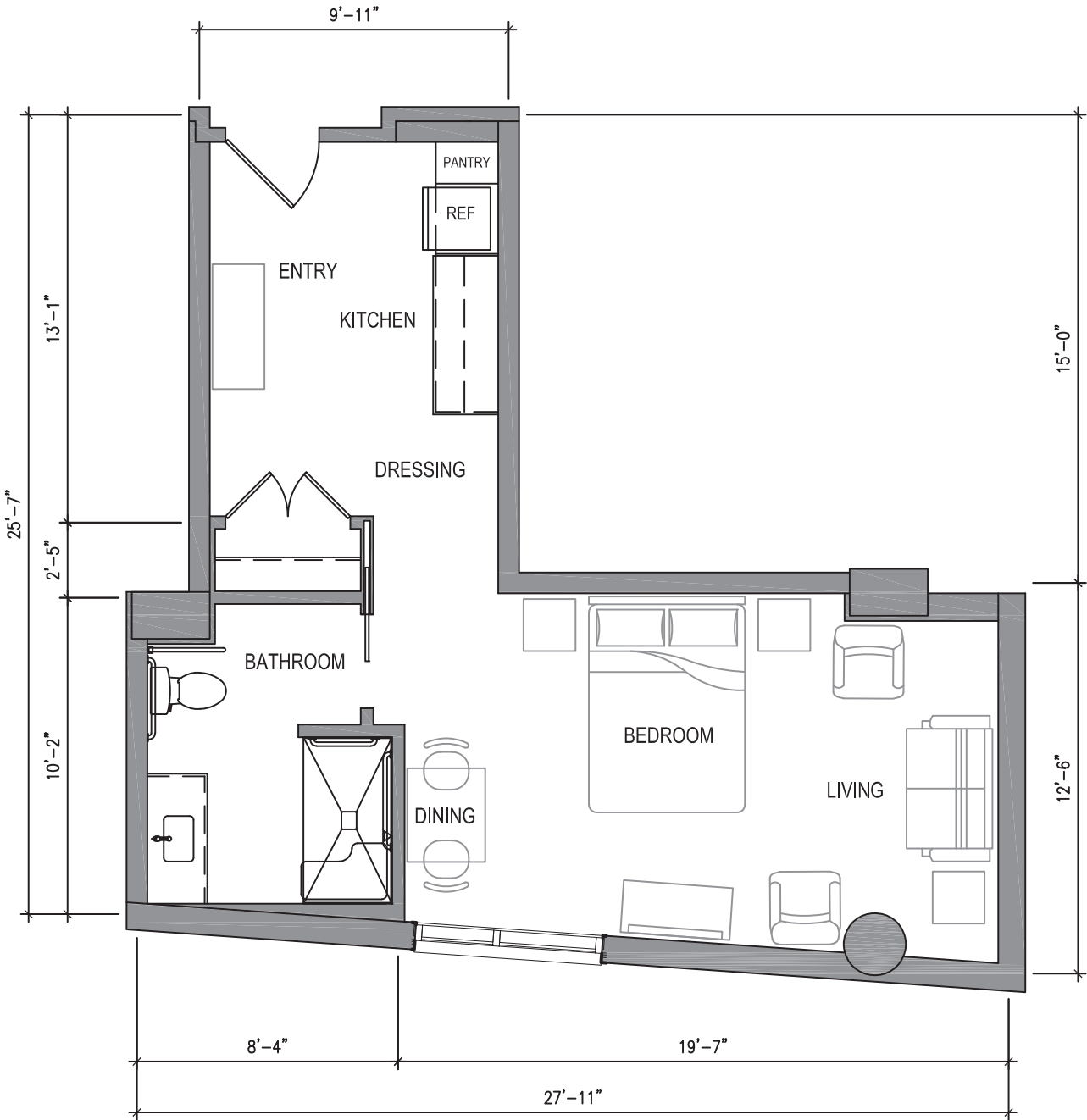
Memory Care
Studio 400 SQ FT



ASSISTED LIVING & MEMORY CARE at LAURELHURST

3100 NE Sandy Blvd • Portland, OR 97232 • 971.544.8100 • MorningStarSeniorLiving.com

Dimensions are for information only. Actual square footage may vary dependent upon location within building.



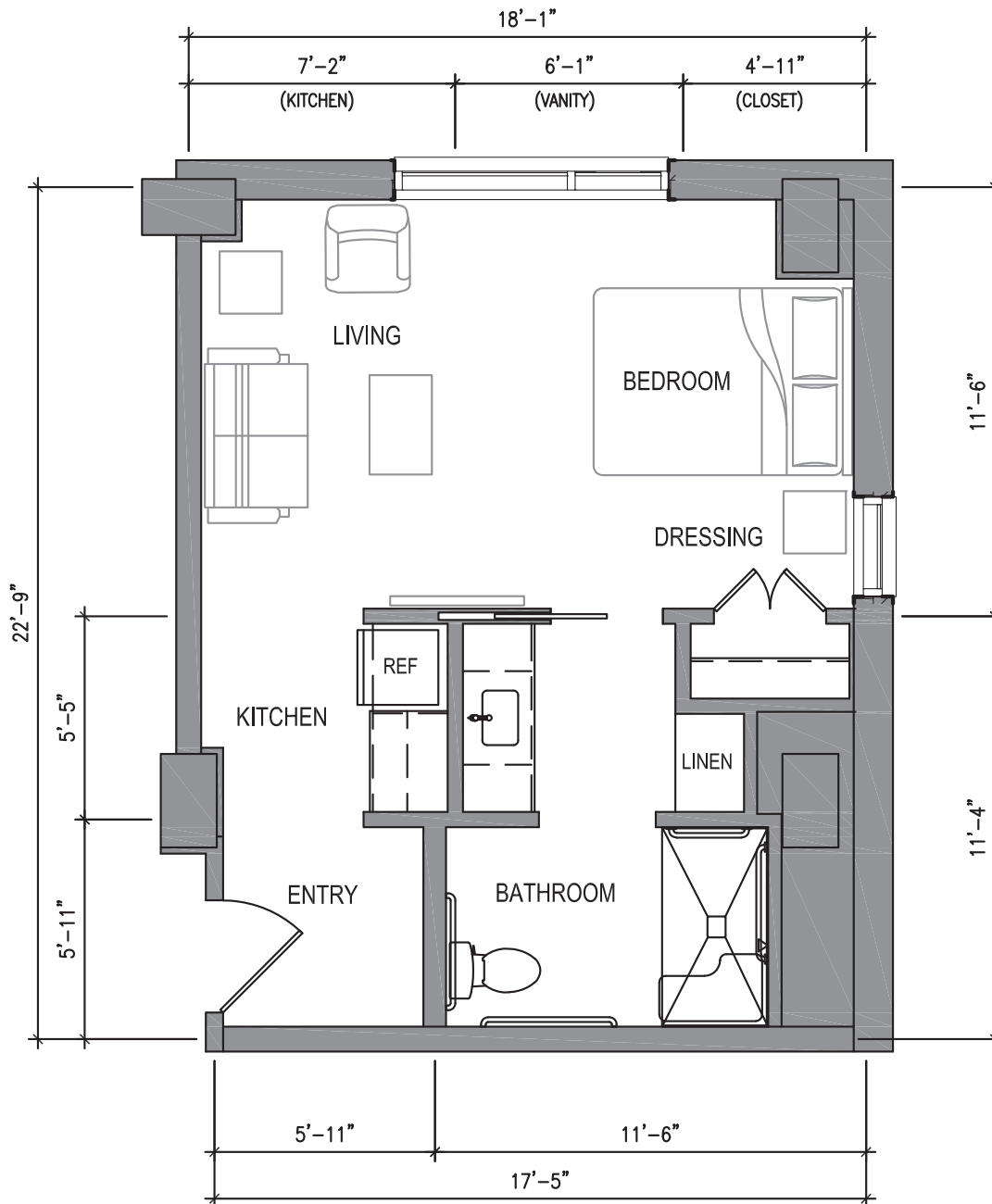
Memory Care
Studio 490 SQ FT



ASSISTED LIVING & MEMORY CARE at LAURELHURST

3100 NE Sandy Blvd • Portland, OR 97232 • 971.544.8100 • MorningStarSeniorLiving.com

Dimensions are for information only. Actual square footage may vary dependent upon location within building.



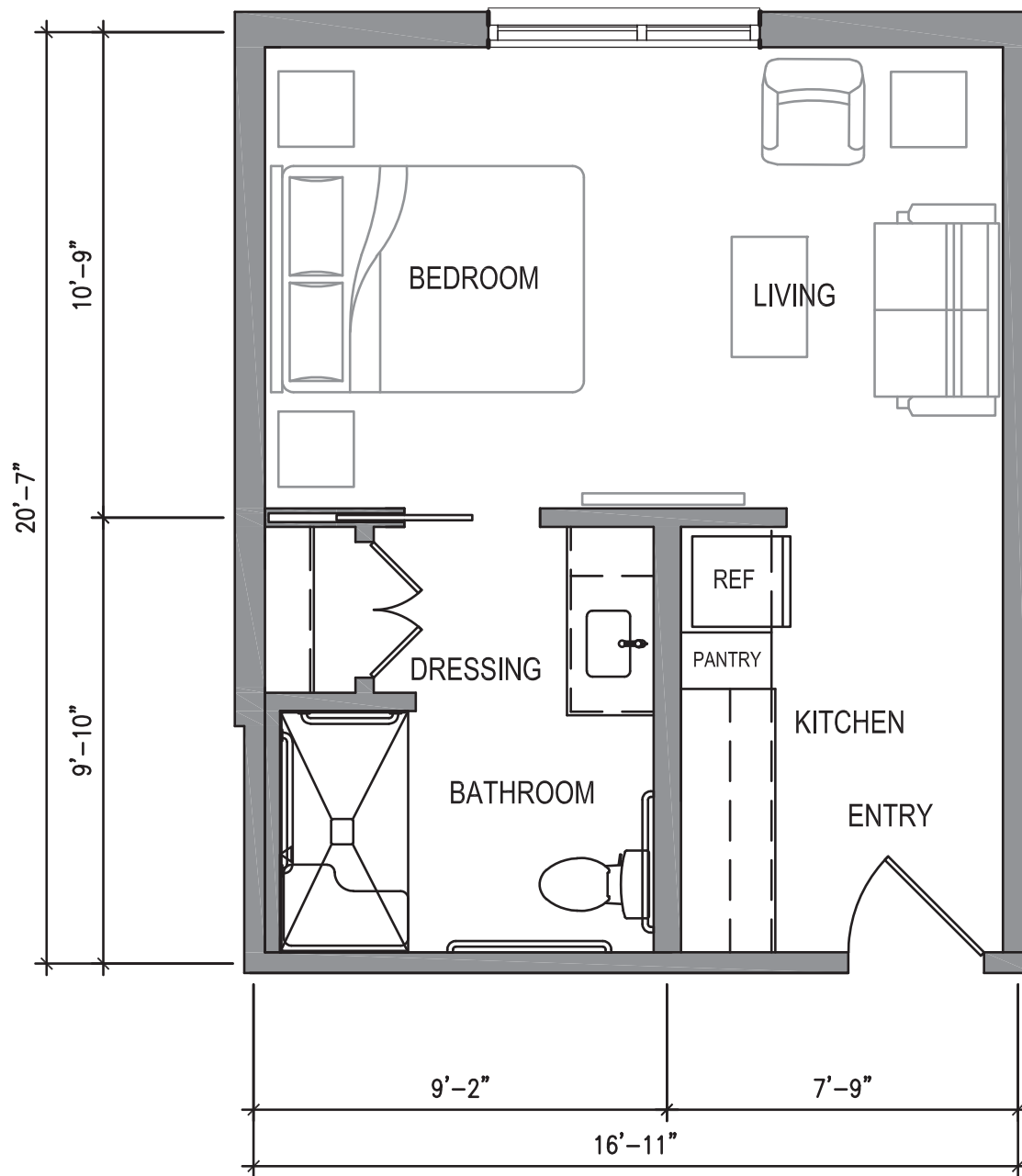
Memory Care Studio 440 SQ FT



ASSISTED LIVING & MEMORY CARE at LAURELHURST

3100 NE Sandy Blvd • Portland, OR 97232 • 971.544.8100 • MorningStarSeniorLiving.com

Dimensions are for information only. Actual square footage may vary dependent upon location within building.



Memory Care

Studio 358 SQ FT

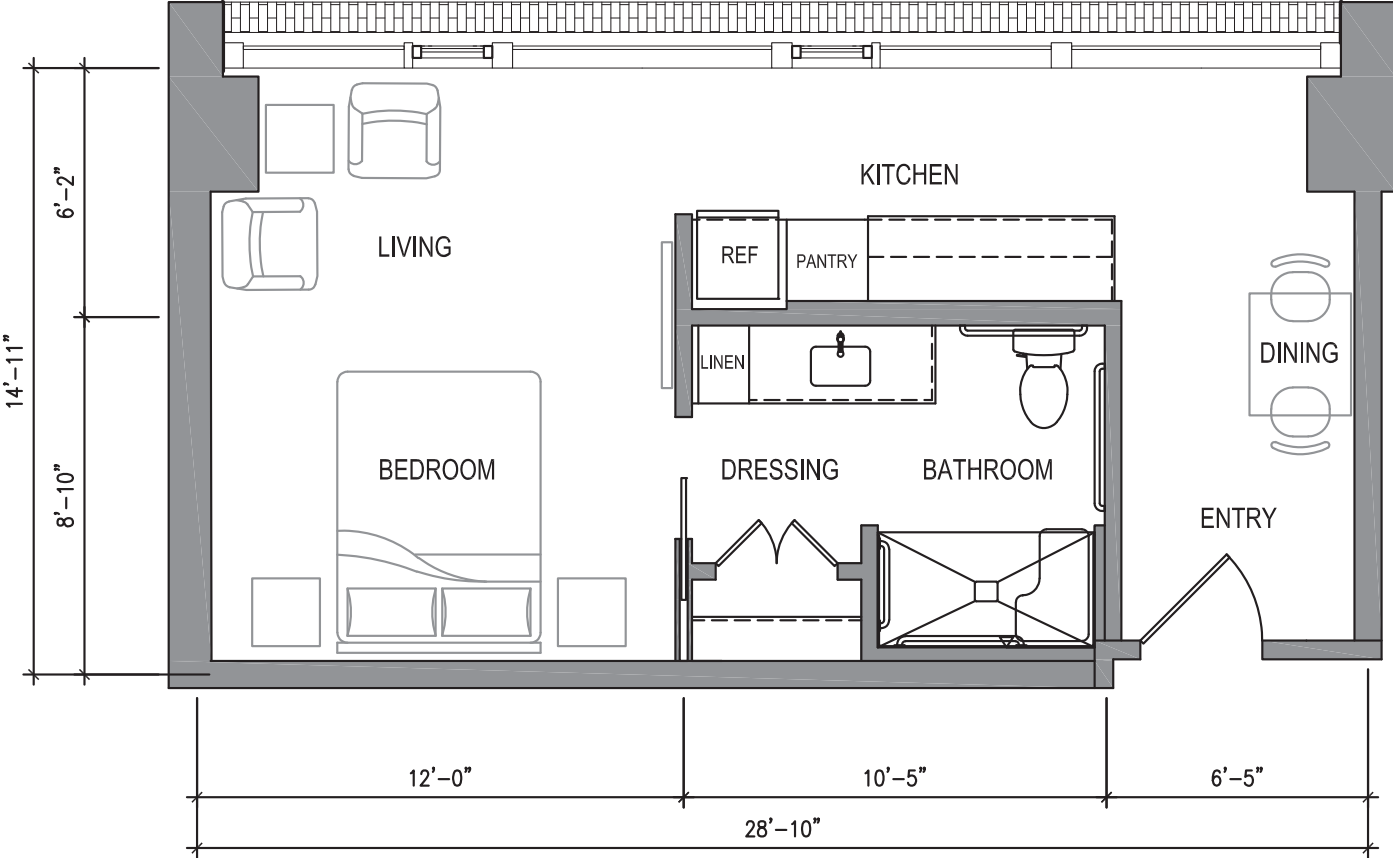


MorningStar

ASSISTED LIVING & MEMORY CARE at LAURELHURST

3100 NE Sandy Blvd • Portland, OR 97232 • 971.544.8100 • MorningStarSeniorLiving.com

Dimensions are for information only. Actual square footage may vary dependent upon location within building.



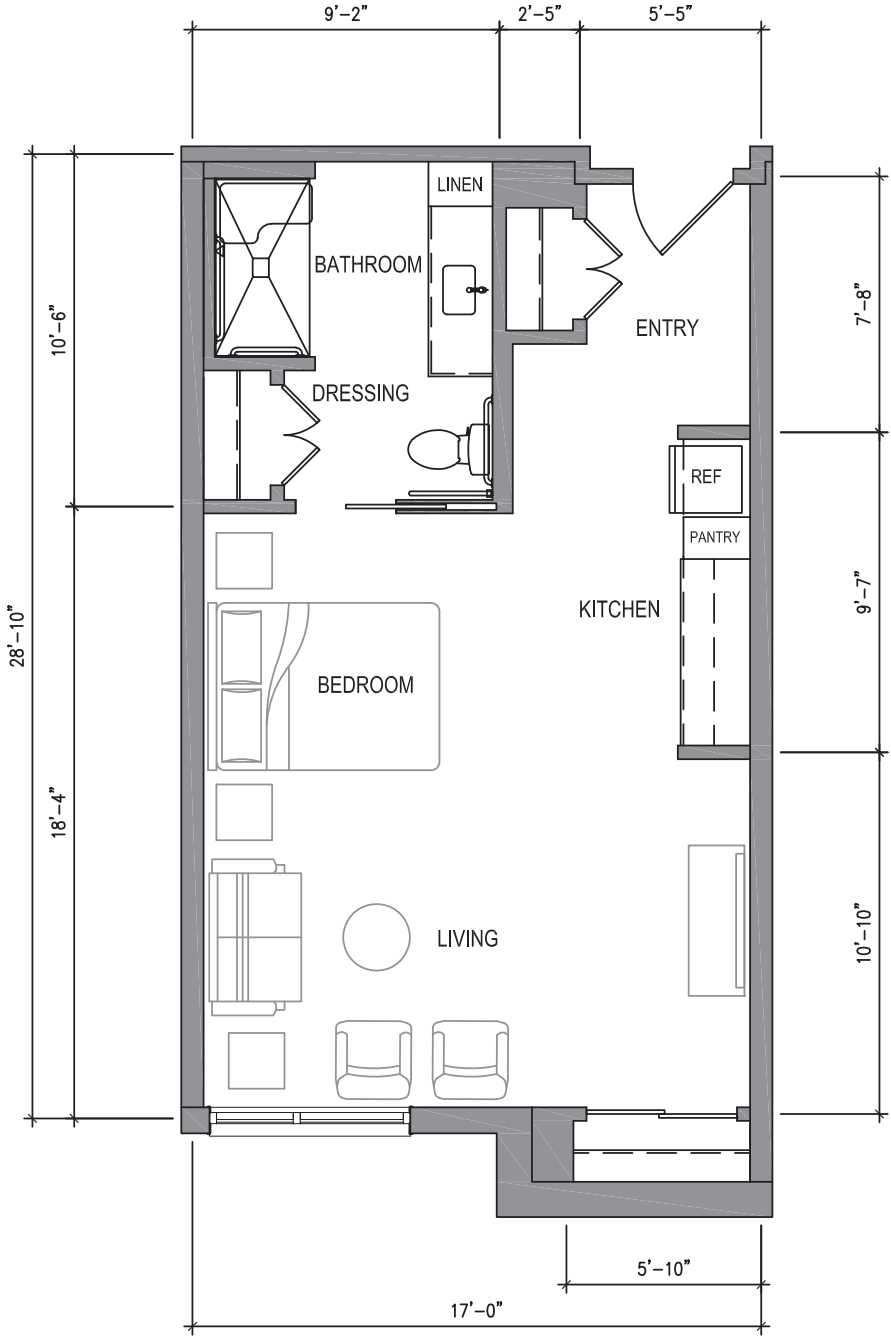
Memory Care Studio 456 SQ FT



ASSISTED LIVING & MEMORY CARE at LAURELHURST

3100 NE Sandy Blvd • Portland, OR 97232 • 971.544.8100 • MorningStarSeniorLiving.com

Dimensions are for information only. Actual square footage may vary dependent upon location within building.



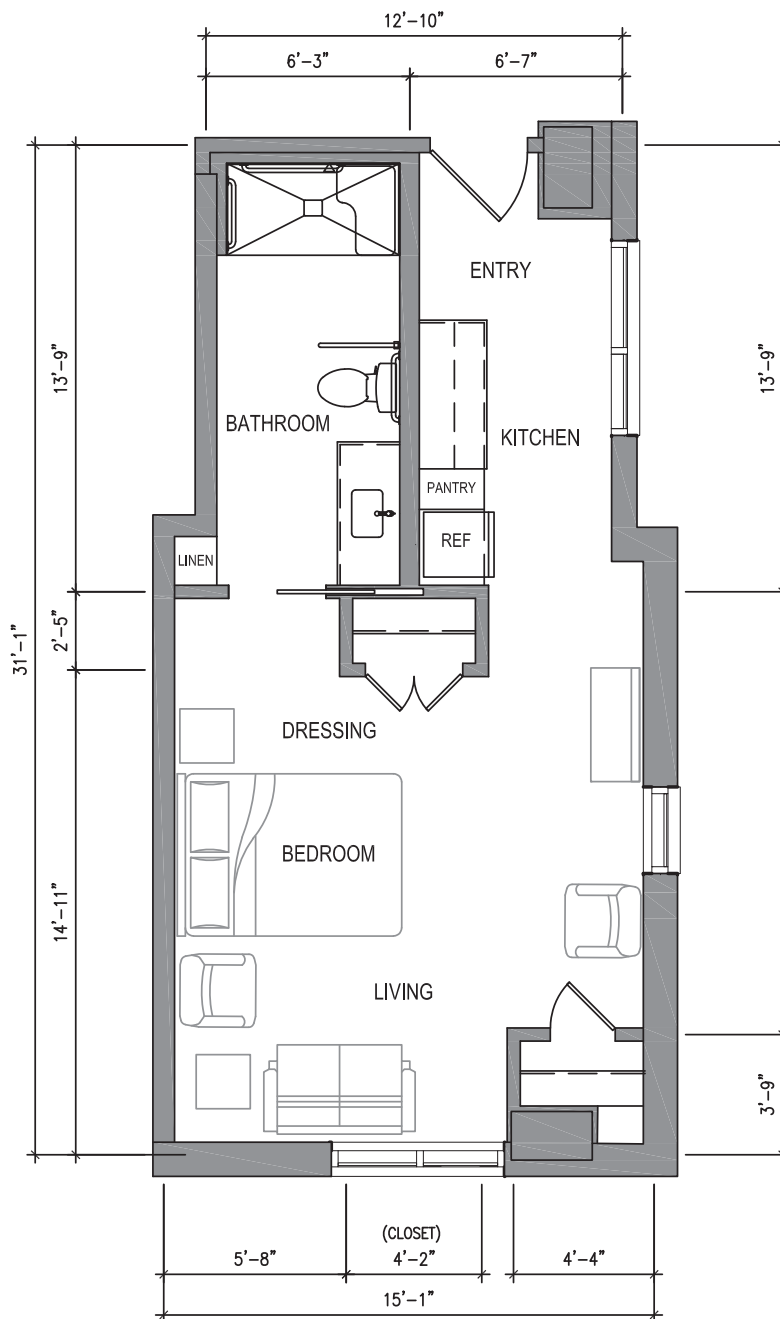
Memory Care
Studio 518 SQ FT



ASSISTED LIVING & MEMORY CARE at LAURELHURST

3100 NE Sandy Blvd • Portland, OR 97232 • 971.544.8100 • MorningStarSeniorLiving.com

Dimensions are for information only. Actual square footage may vary dependent upon location within building.



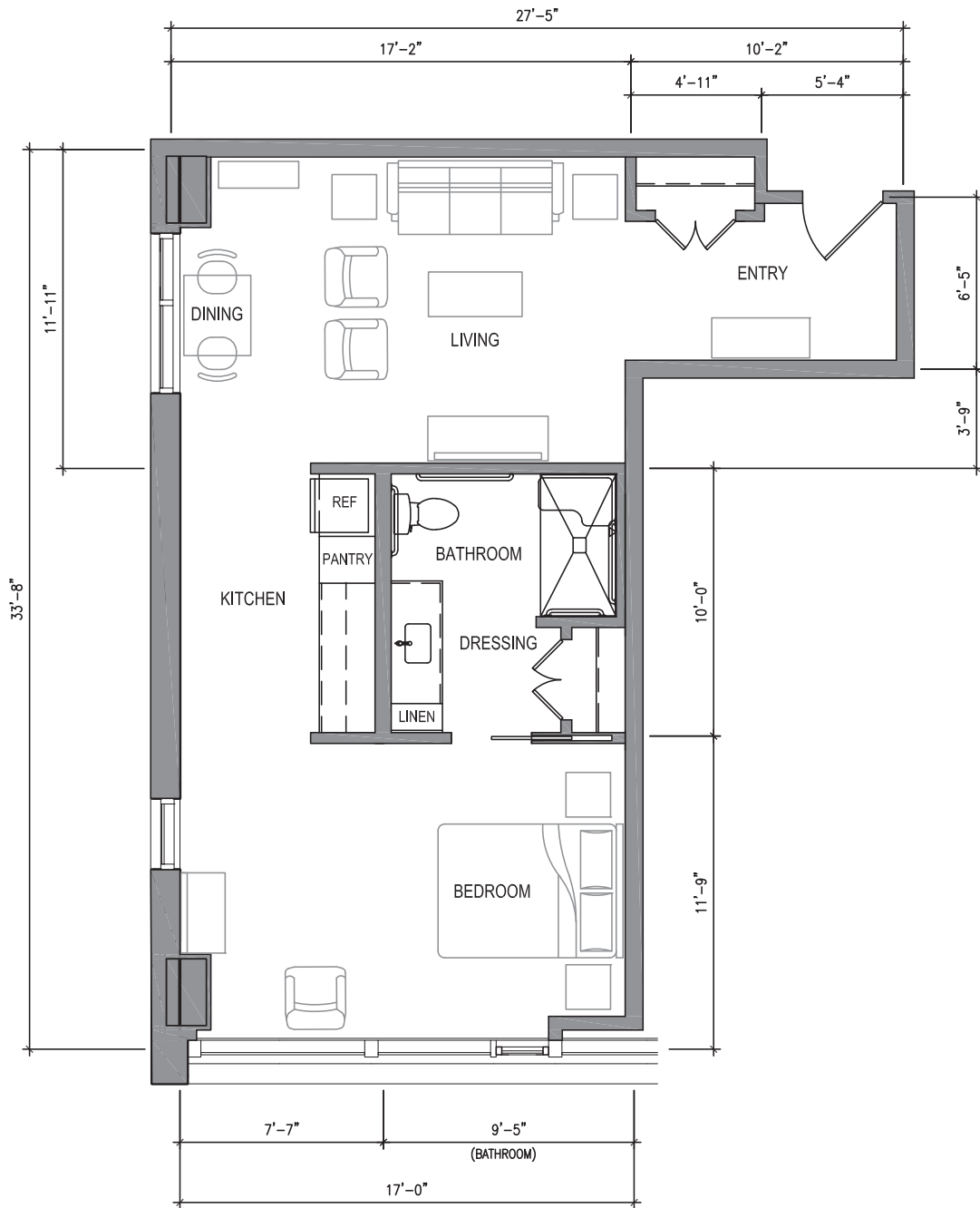
Memory Care Studio 477 SQ FT



ASSISTED LIVING & MEMORY CARE at LAURELHURST

3100 NE Sandy Blvd • Portland, OR 97232 • 971.544.8100 • MorningStarSeniorLiving.com

Dimensions are for information only. Actual square footage may vary dependent upon location within building.



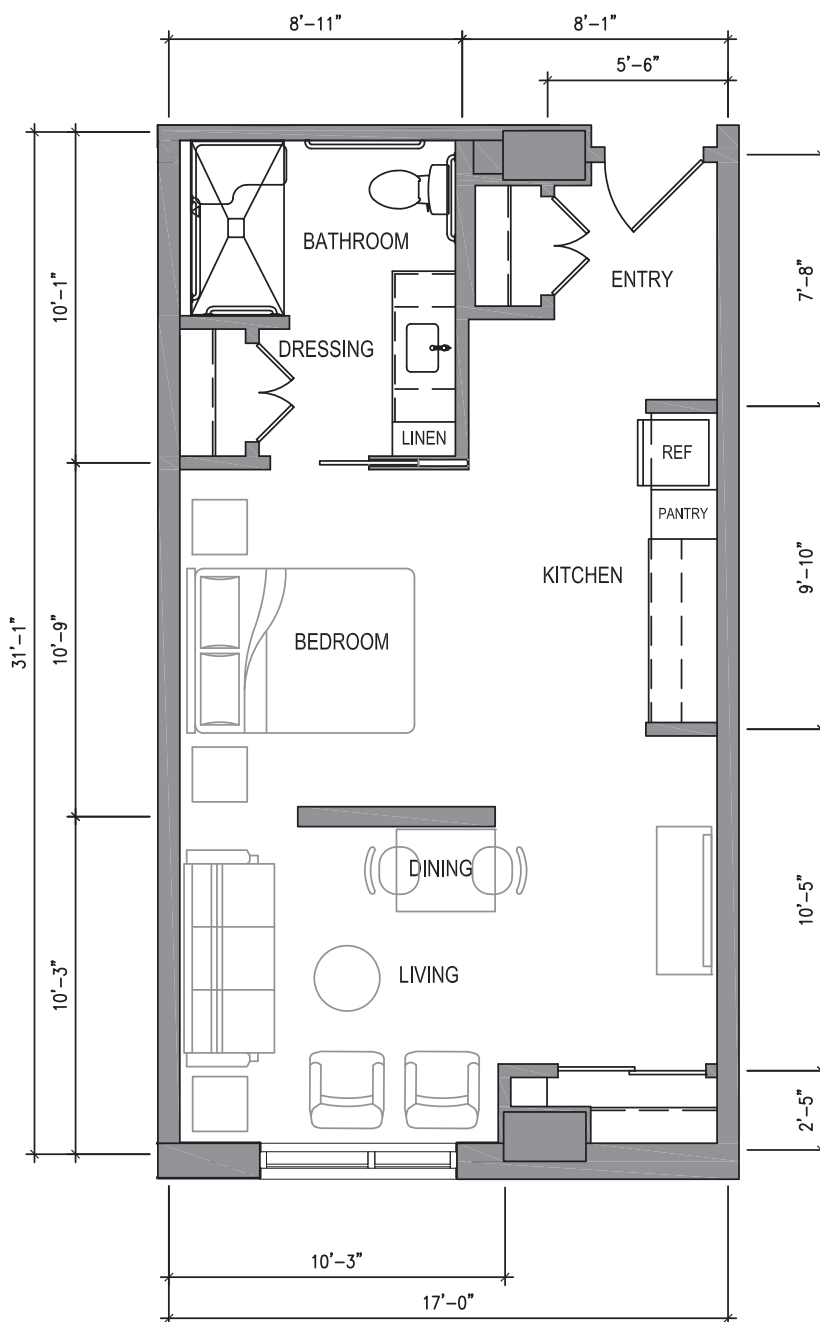
Memory Care
1 Bed, 1 Bath 682 SQ FT



ASSISTED LIVING & MEMORY CARE at LAURELHURST

3100 NE Sandy Blvd • Portland, OR 97232 • 971.544.8100 • MorningStarSeniorLiving.com

Dimensions are for information only. Actual square footage may vary dependent upon location within building.



Memory Care

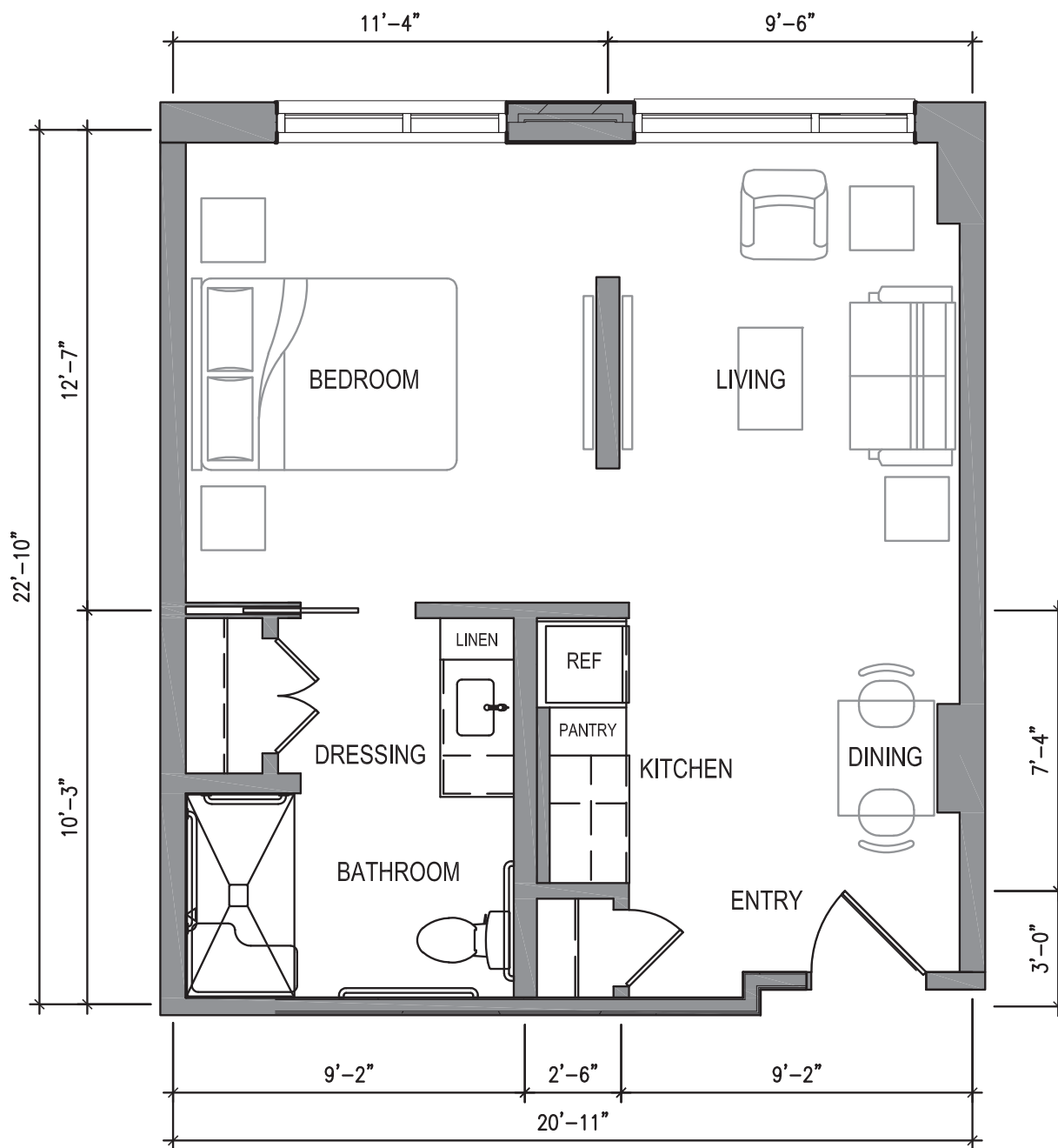
1 Bed, 1 Bath 541 SQ FT



ASSISTED LIVING & MEMORY CARE at LAURELHURST

3100 NE Sandy Blvd • Portland, OR 97232 • 971.544.8100 • MorningStarSeniorLiving.com

Dimensions are for information only. Actual square footage may vary dependent upon location within building.



Memory Care

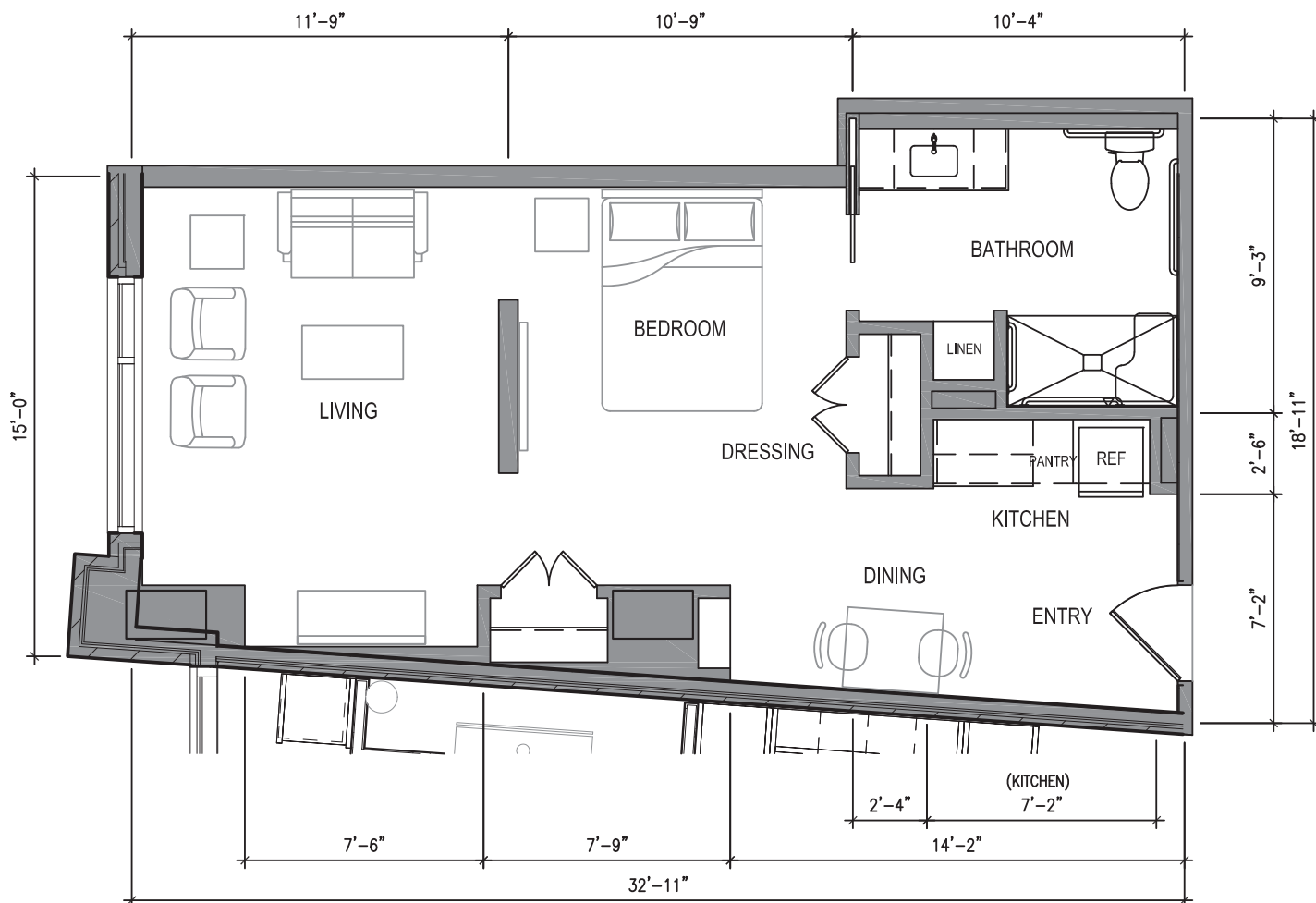
1 Bed, 1 Bath 494 SQ FT



ASSISTED LIVING & MEMORY CARE at LAURELHURST

3100 NE Sandy Blvd • Portland, OR 97232 • 971.544.8100 • MorningStarSeniorLiving.com

Dimensions are for information only. Actual square footage may vary dependent upon location within building.



Memory Care

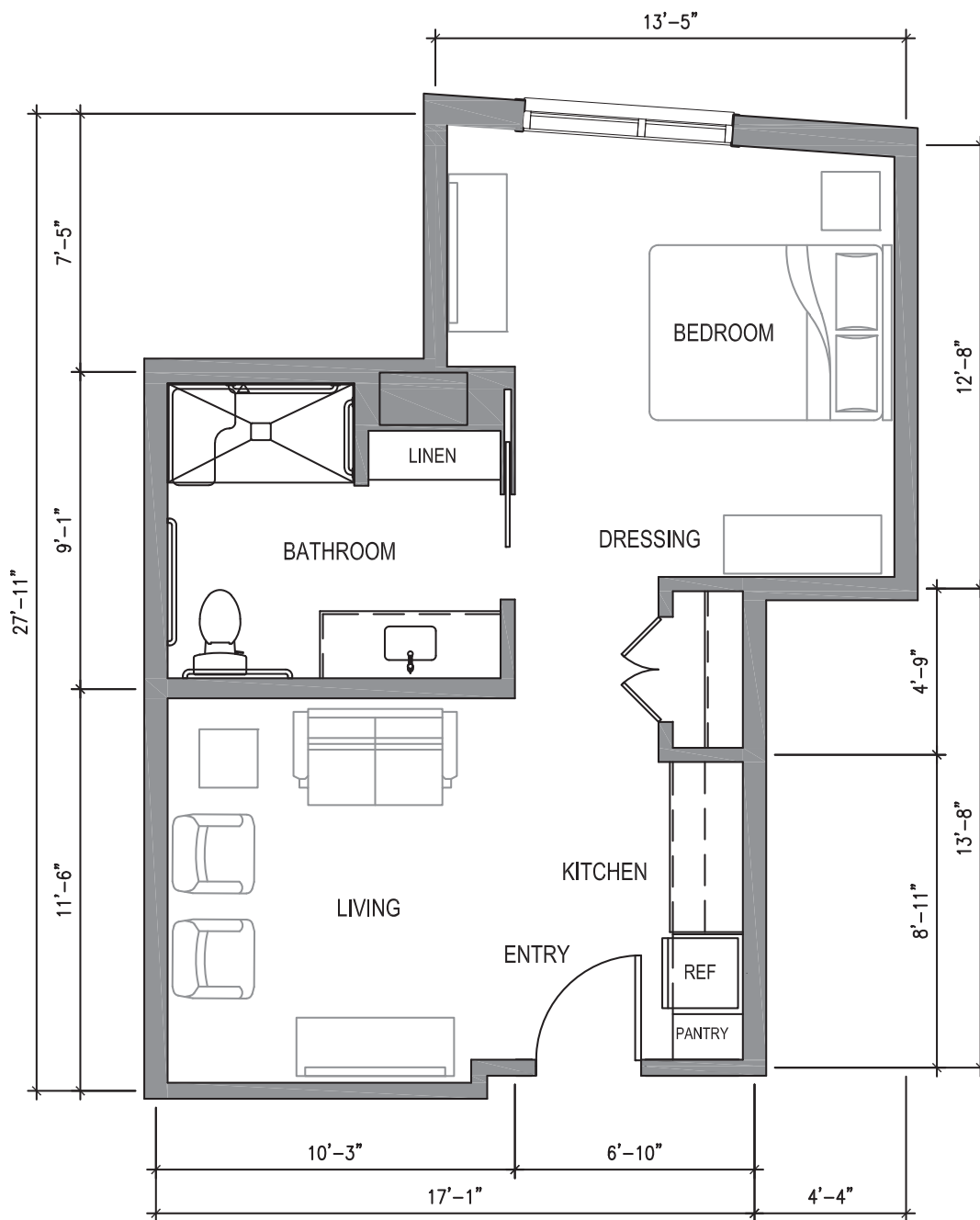
1 Bed, 1 Bath 574 SQ FT



ASSISTED LIVING & MEMORY CARE at LAURELHURST

3100 NE Sandy Blvd • Portland, OR 97232 • 971.544.8100 • MorningStarSeniorLiving.com

Dimensions are for information only. Actual square footage may vary dependent upon location within building.



Memory Care

1 Bed, 1 Bath 480 SQ FT



ASSISTED LIVING & MEMORY CARE at LAURELHURST

3100 NE Sandy Blvd • Portland, OR 97232 • 971.544.8100 • MorningStarSeniorLiving.com

Dimensions are for information only. Actual square footage may vary dependent upon location within building.