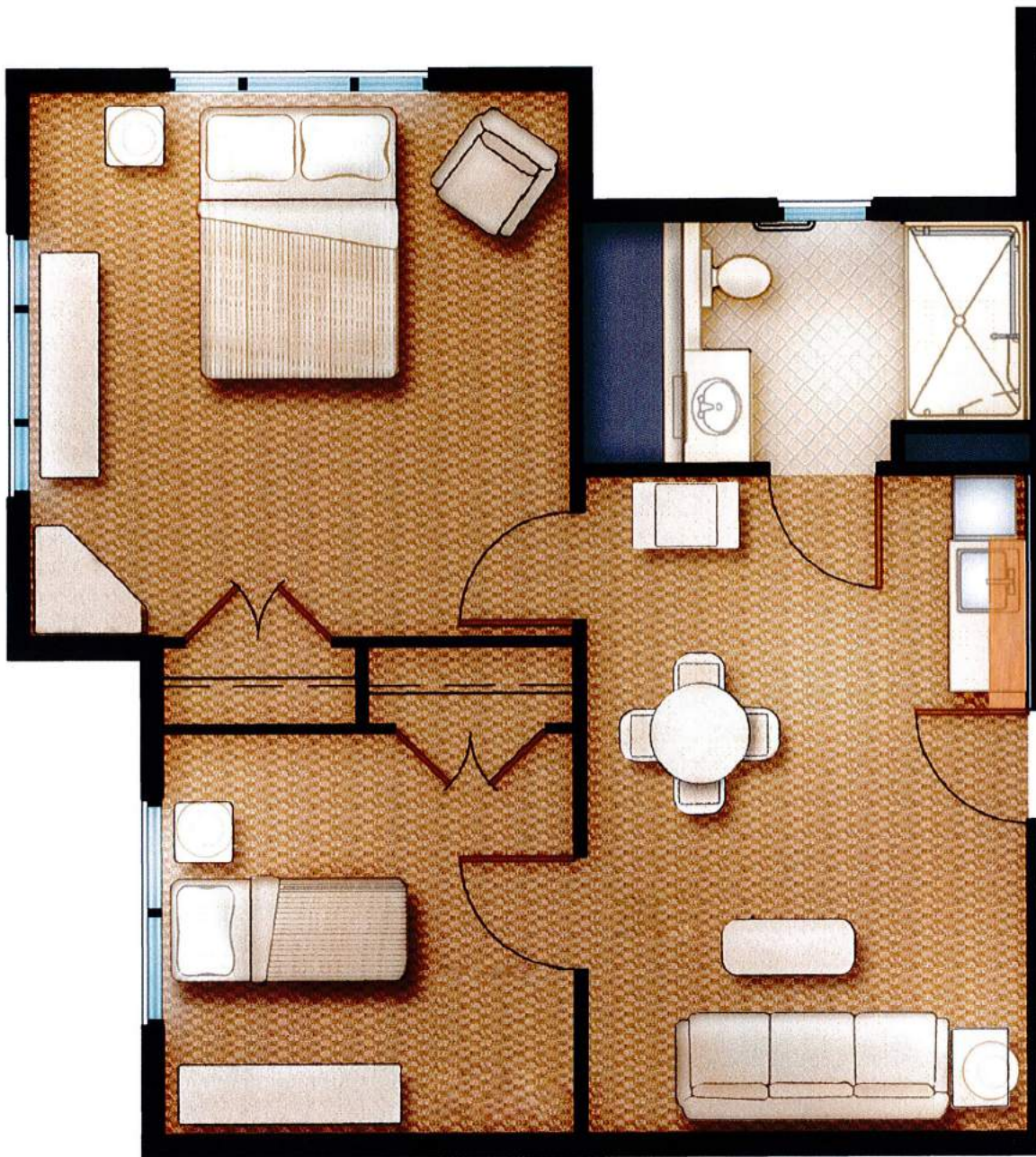


Assisted Living
Two-Bedroom: 483-593 sq ft



MorningStar

ASSISTED LIVING & MEMORY CARE
at MOUNTAIN SHADOWS



Assisted Living
Large Two-Bedroom: 653 sq ft, 683 sq ft



MorningStar

ASSISTED LIVING & MEMORY CARE
at MOUNTAIN SHADOWS