



Assisted Living Studio: 311-366 sq ft
Memory Care Studio: 282-383 sq ft



MorningStar

ASSISTED LIVING & MEMORY CARE
at MOUNTAIN SHADOWS

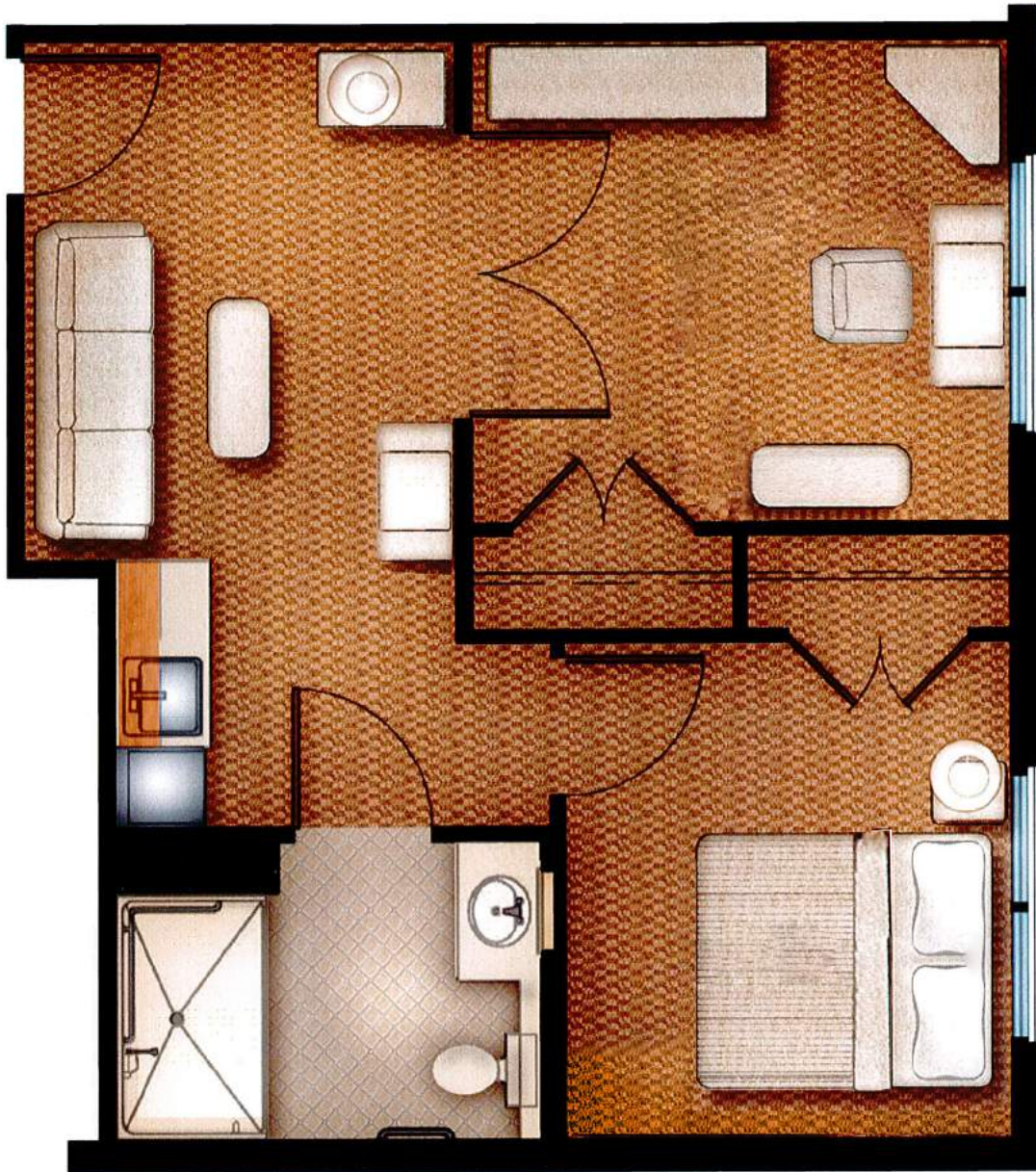


Assisted Living One-Bedroom: 426-522 sq ft
Memory Care One-Bedroom: 426 sq ft, 472 sq ft



MorningStar

ASSISTED LIVING & MEMORY CARE
at MOUNTAIN SHADOWS

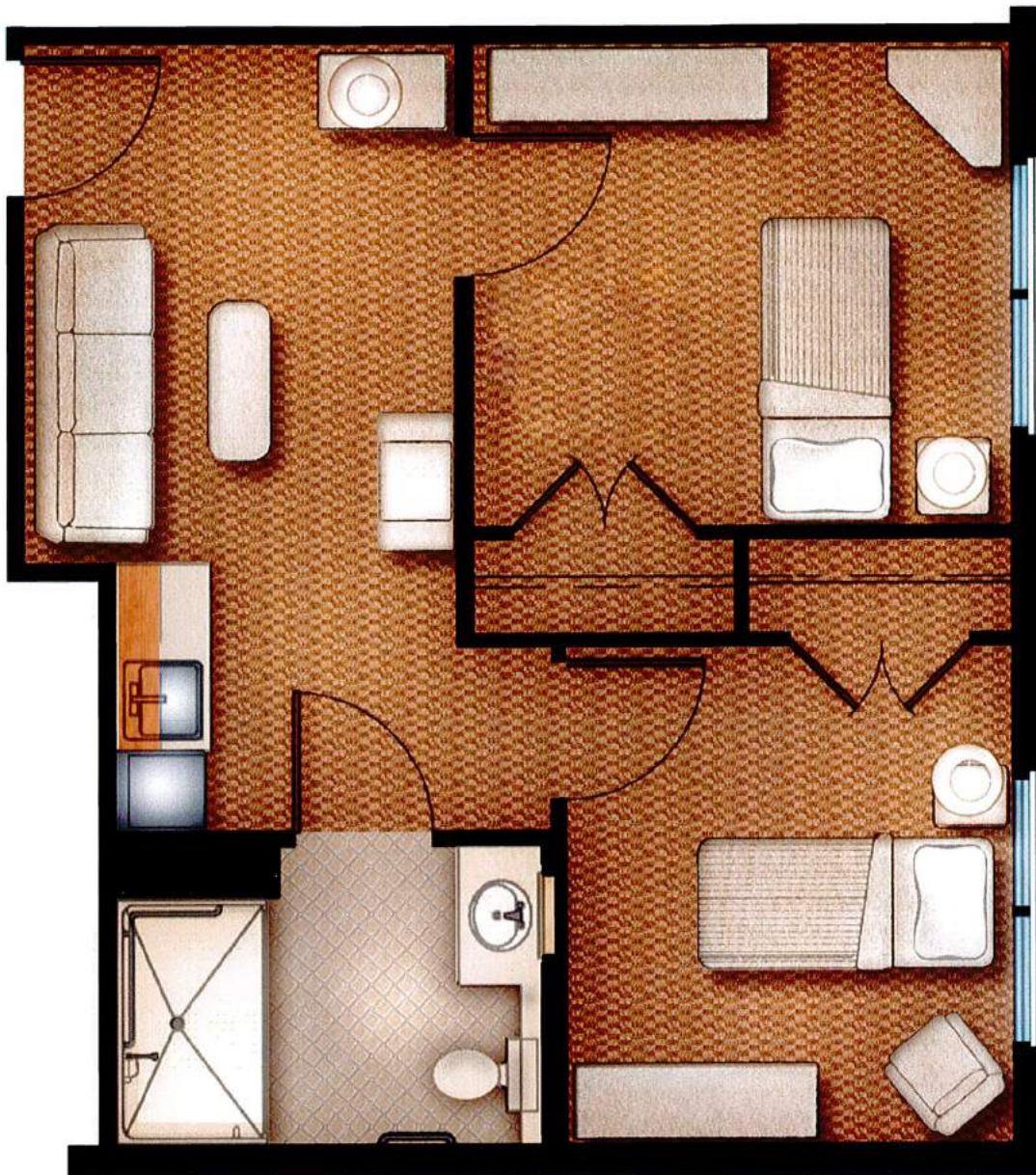


Assisted Living
Two-Bedroom: 483-593 sq ft



MorningStar

ASSISTED LIVING & MEMORY CARE
at MOUNTAIN SHADOWS

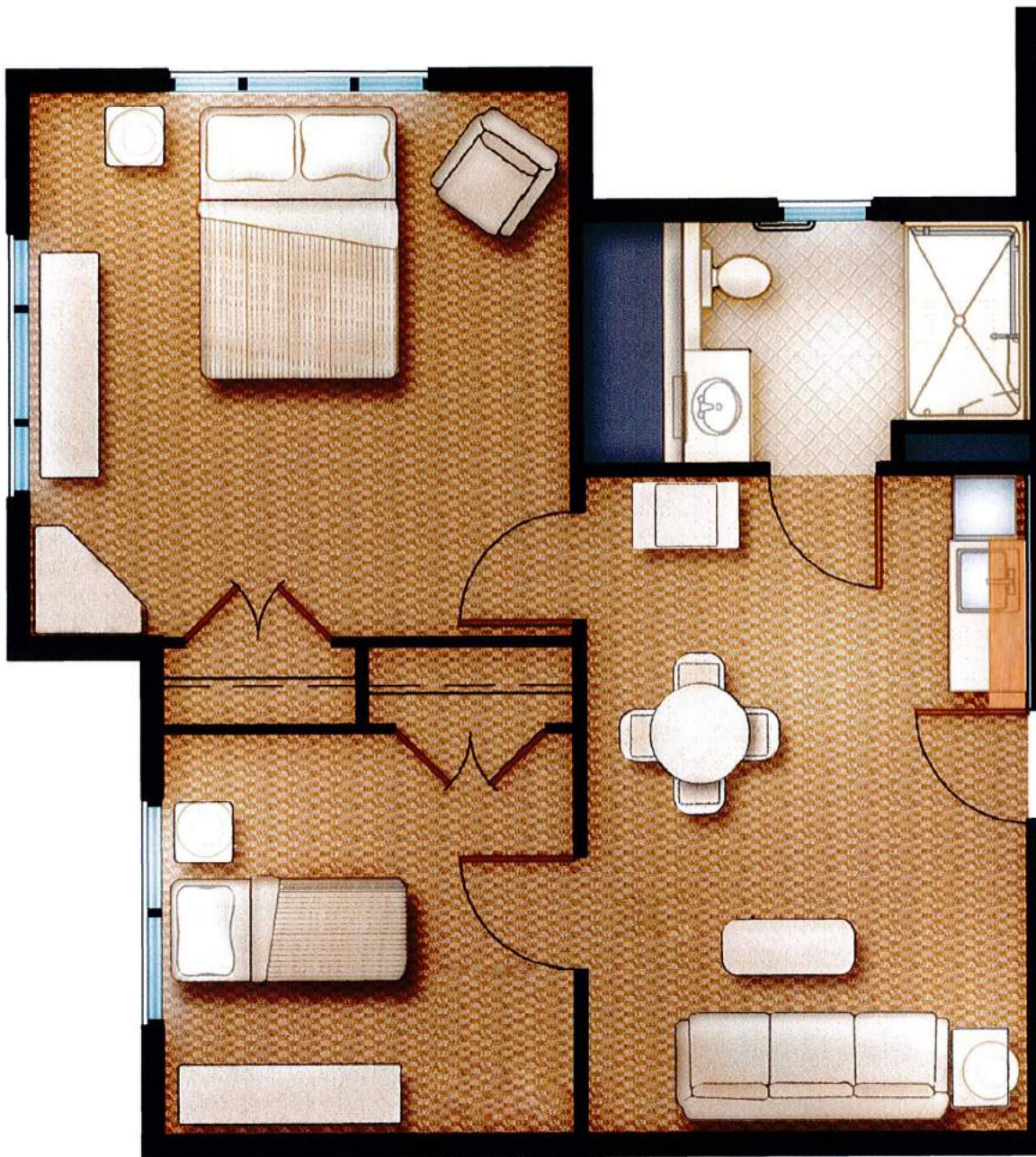


Assisted Living
Two-Bedroom: 483-593 sq ft



MorningStar

ASSISTED LIVING & MEMORY CARE
at MOUNTAIN SHADOWS



Assisted Living
Large Two-Bedroom: 653 sq ft, 683 sq ft



MorningStar

ASSISTED LIVING & MEMORY CARE
at MOUNTAIN SHADOWS